



From \$340,900

Stroll into the Boardwalk with nearly 2,100 square feet of first-floor coastal-inspired features. Upon entering from a large covered front porch, discover a foyer with an optional tray ceiling leading to a spacious drop zone area. Two bedrooms with large closets and a full bath are located on the left with an open dining area just ahead. Choose to add an intricate coffer ceiling across from optional built-in cabinets or beautiful barn doors. Create an intimate great room area with ...



3 Bedrooms



2.0 Bathrooms



2,189 Sq.Ft.



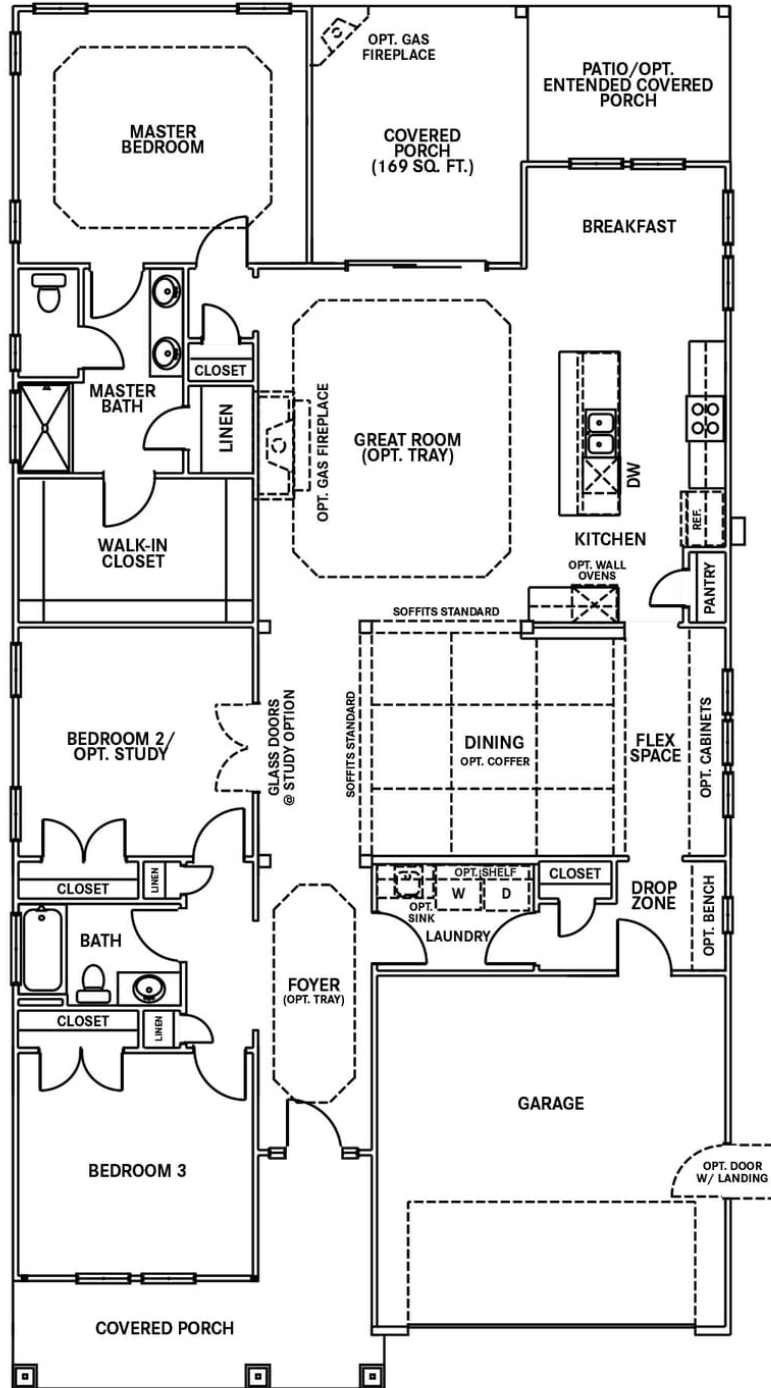
2 Car Garage

CONTACT US 757-550-2617

WWW.CESHOMES.COM



FIRST LEVEL

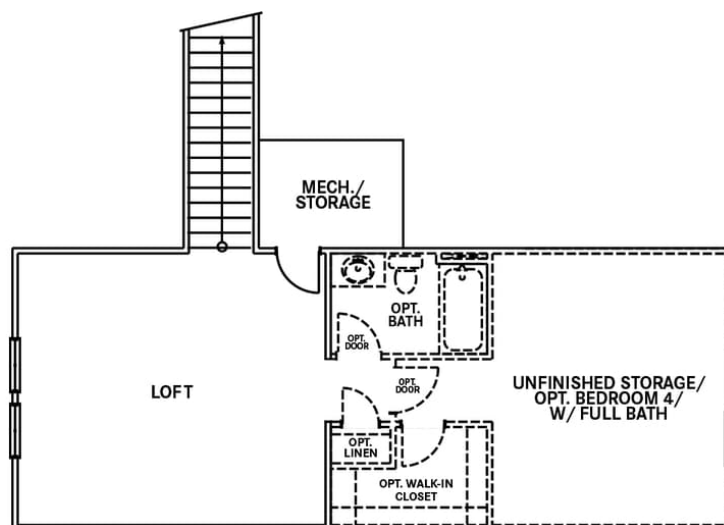


CONTACT US 757-550-2617

WWW.CESHOMES.COM



OPTIONAL SECOND LEVEL

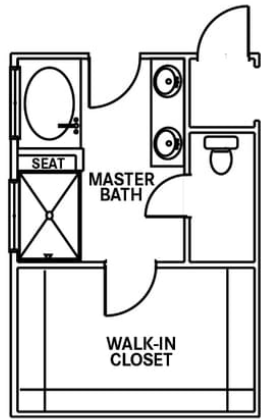


CONTACT US 757-550-2617

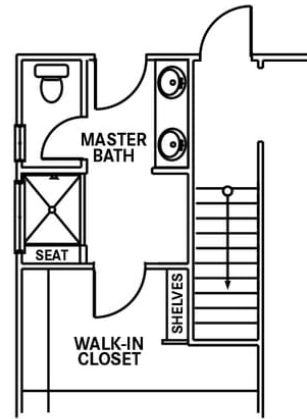
WWW.CESHOMES.COM



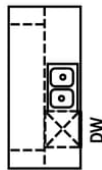
OPTIONS



OPT. DELUXE MASTER BATH 2 W/ RANCH ONLY



OPT. DELUXE MASTER BATH 1 W/ SECOND FLOOR OPTION



OPT. GOURMET KITCHEN ISLAND

CONTACT US 757-550-2617

WWW.CESHOMES.COM



FIRST FLOOR



CONTACT US 757-550-2617

WWW.CESHOMES.COM

