



## Neill's Pointe Community

### The Holly Floor Plan

The Holly layout is a great example of how Chesapeake Homes creates spaces that are both functional and beautiful. This 2,343 square feet home provides homeowners with an included three-car garage, an open-concept great room, a kitchen, and a dining room that leads to a covered rear porch. On the ground floor, you will also find a bedroom and an upgraded to a full bathroom. On the second floor, you will find two spacious bedrooms both with walk-in closets and a full bathroom. The rest of the floor is the open loft that leads to the Owner's suite and laundry room with countertop. The owner's suite has tray ceilings, a deluxe bathroom, and a long walk-in closet. It will be the perfect spot to lay your head down after a long day. This stylish all-in-one build is perfect for the homeowner who wants to be able to customize a home but keep the overall framework of the elegant Holly model. \*Please reach out to learn more about this home and secure your VIP tour time at 919-352-9435!\*

**\$439,900**



**4 Bedrooms**



**3.0 Bathrooms**



**2,343 Sq.Ft.**



**2 Stories**



**3 Car Garage**

**CONTACT US 757-550-2617**

**WWW.CESHOMES.COM**



## FIRST FLOOR

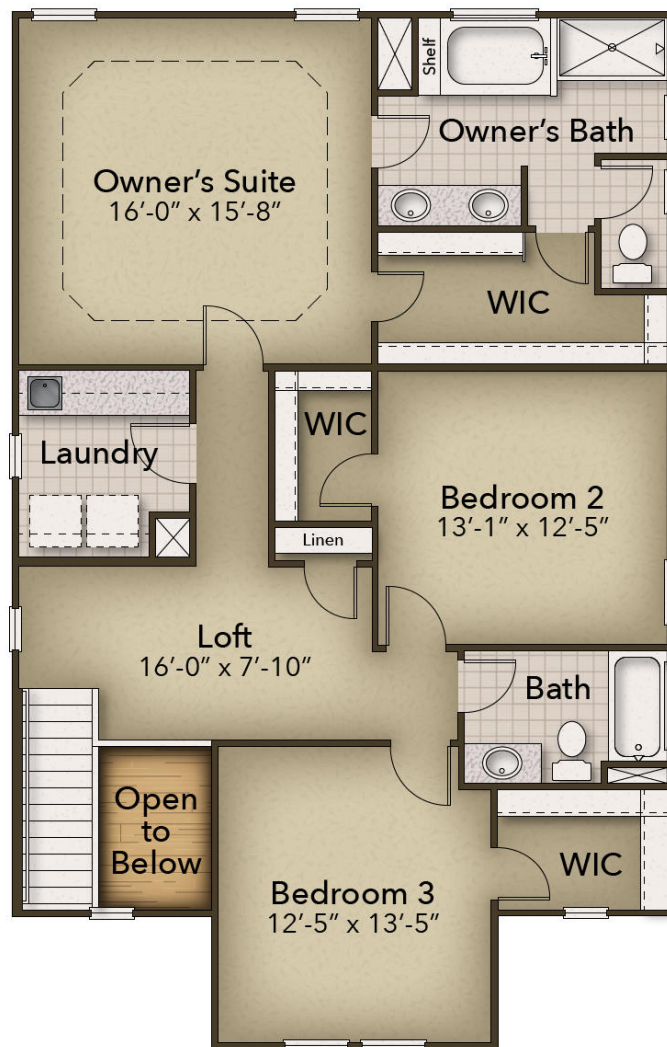


CONTACT US 757-550-2617

WWW.CESHOMES.COM



## SECOND FLOOR



**CONTACT US 757-550-2617**

**WWW.CESHOMES.COM**

