



## Neill's Pointe Community

### The Poppy Floor Plan

This nearly 2,500-square-foot home is the perfect choice for any family in search of a new place to call theirs. The Poppy is a spacious open-concept home with a total of five bedrooms. When you step off the covered front porch, you will step into a long foyer leading to the vast great room, dining room, and kitchen. Open living makes this the perfect space for entertaining and ensuring everyone feels connected in your home. A rear covered porch has been added to expand your everyday living into the your backyard. While one bedroom and a full bath are downstairs, up the stairs we find three more bedrooms with another full bath that is equipped with a double vanity. Continuing on the second floor is the vast owner's suite. With tray ceilings, sinks on two separate vanities, and a long walk-in closet, this just may turn into your favorite spot in the house. Right outside this suite is the laundry room, giving you easy access to this space. Perfect for all families, The Poppy allows...

**\$394,900**

 **5 Bedrooms**

 **3.0 Bathrooms**

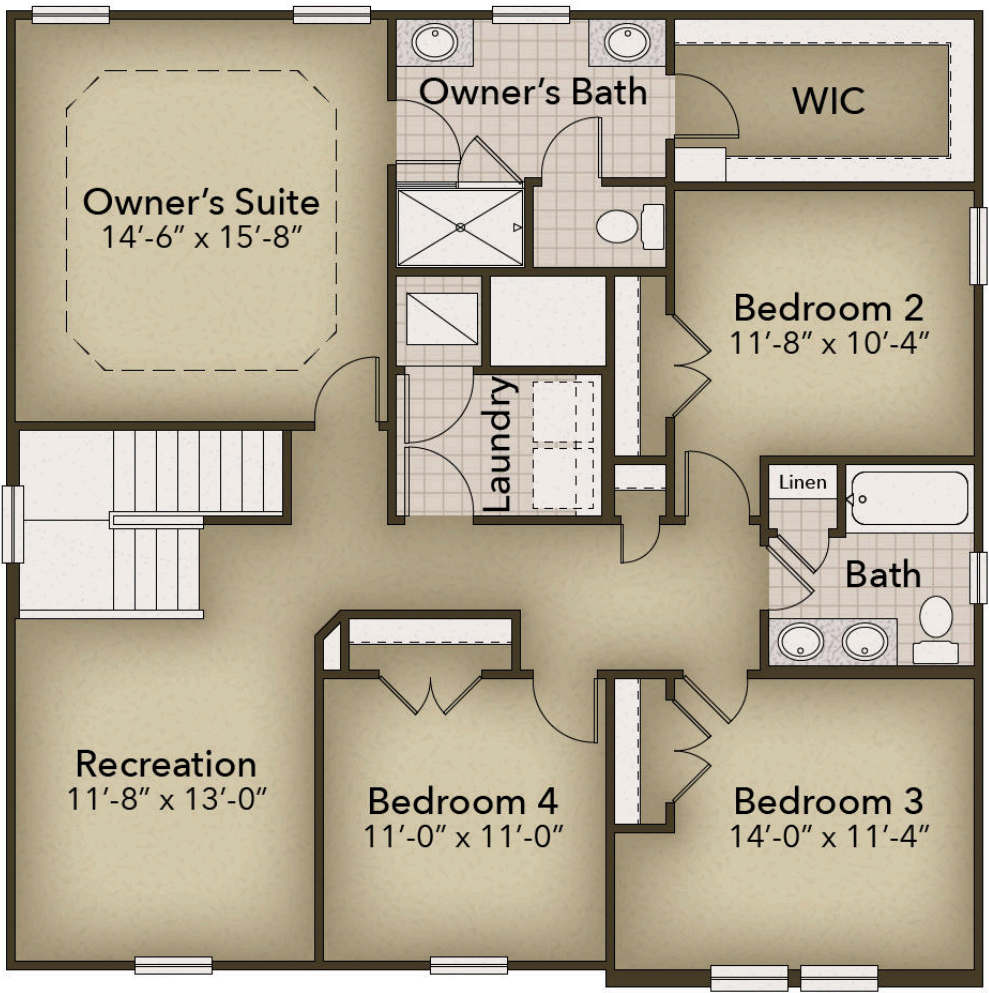


FIRST FLOOR



CONTACT US 757-550-2617  
WWW.CESHOMES.COM

**SECOND FLOOR**



**CONTACT US 757-550-2617**

**WWW.CESHOMES.COM**