



## Neill's Pointe Community

### The Hawthorne Floor Plan

The Hawthorne is a beautifully designed home that offers comfort, flexibility, and plenty of room to grow. With over 2,100 square feet of thoughtfully planned space, this floor plan includes three bedrooms and 2.5 baths within the layout. On the first floor, you'll find a spacious open-concept living area where the great room, dinette, and kitchen flow seamlessly together, ideal for both everyday living and entertaining. Also downstairs, there's a formal dining room that can be converted into a private study, a convenient powder room, and access to a two-car garage. Upstairs, all bedrooms are located together, including the impressive owner's suite with optional tray ceilings, a large bathroom, and two walk-in closets. The laundry room is located just outside the suite for easy access, alongside two additional bedrooms, a full bath, and a loft. The open loft can be reimagined as a playroom, office, or second living space to suit your needs. The Hawthorne is a flexible, welcoming...

**\$364,900**



**3 Bedrooms**



**2.5 Bathrooms**



**2,176 Sq.Ft.**



**2 Stories**



**2 Car Garage**

**CONTACT US 757-550-2617**

**WWW.CESHOMES.COM**



## FIRST FLOOR

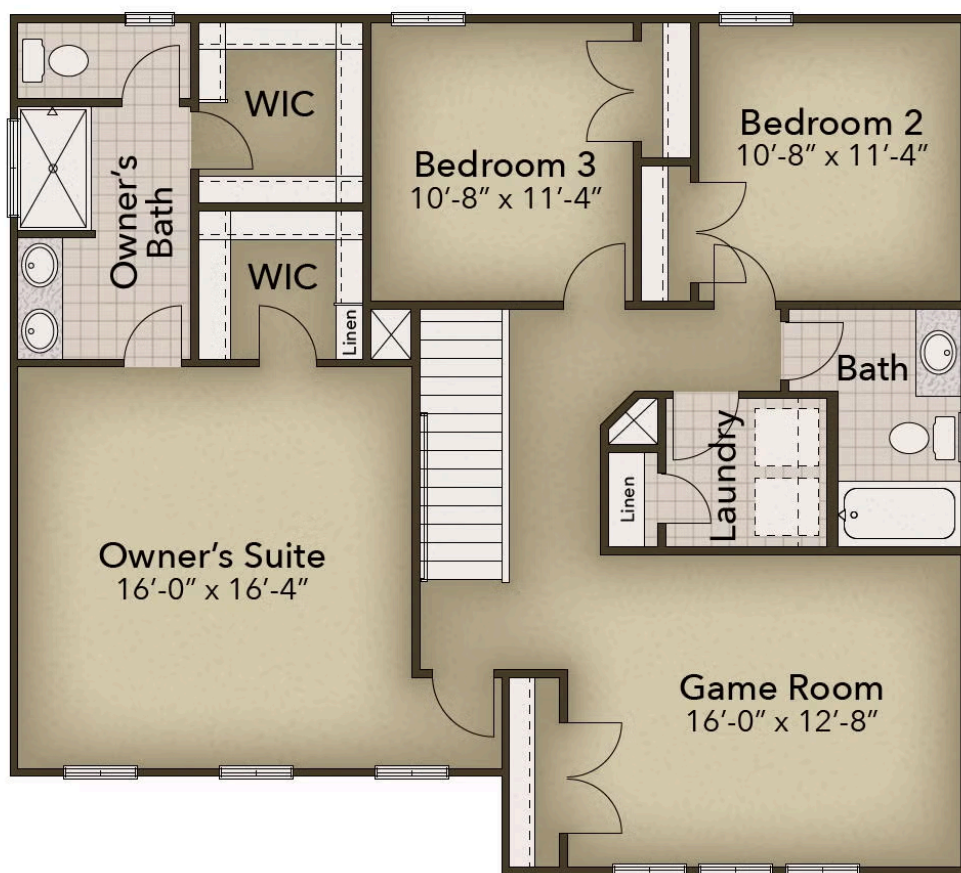


CONTACT US 757-550-2617

WWW.CESHOMES.COM



## SECOND FLOOR



CONTACT US 757-550-2617

WWW.CESHOMES.COM

