



Neill's Pointe Community

The Concerto Floor Plan

A masterpiece of model living environments, The Concerto offers the perfect floor plan for larger families. With four bedrooms, three full bathrooms, and 2,666 square feet of space, this model performs in harmony with today's busy lifestyles. Easily orchestrate daily activities with a huge and open kitchen, breakfast area, and great room. Upstairs, discover a breathtaking owner's suite complete with a hand-crafted tray ceiling, his-and-her vanity sink, spa bathtub and shower, and an enormous walk-in closet. The second floor also offers two bedrooms with large closets, a full bathroom, and a laundry room. Along with all of these features, this home offers a vast loft that you can turn into an exercise room, study space, or even an in-home movie theater. The Concerto is bound to leave you and your family with an everlasting performance! *Please reach out to learn more about this home and secure your VIP tour time at 919-352-9435!*

\$421,850



4 Bedrooms



3.0 Bathrooms



2,666 Sq.Ft.



2 Stories



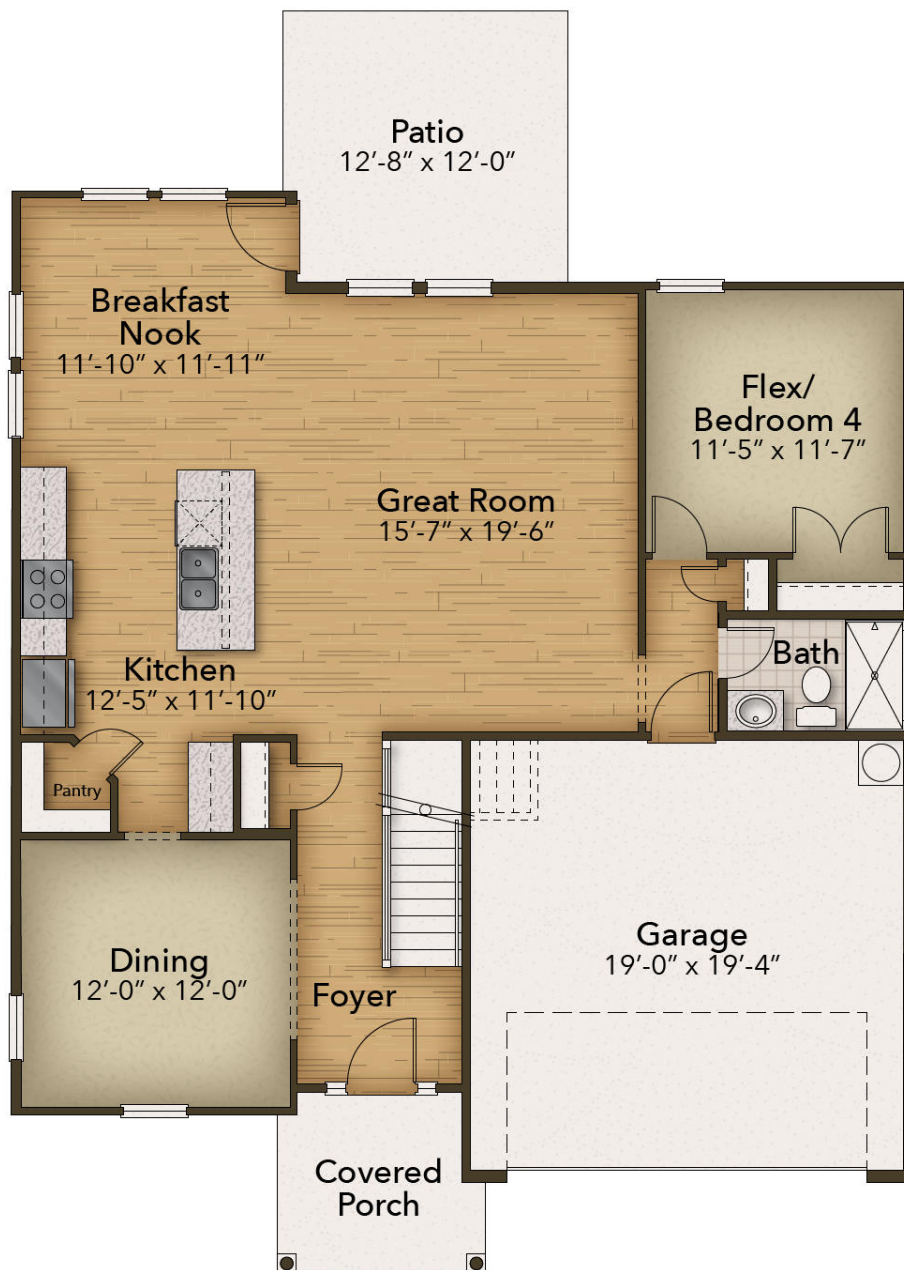
2 Car Garage

CONTACT US 757-550-2617

WWW.CESHOMES.COM



FIRST FLOOR



CONTACT US 757-550-2617

WWW.CESHOMES.COM



SECOND FLOOR



CONTACT US 757-550-2617

WWW.CESHOMES.COM

