



## Neill's Pointe Community

### The Hickory Floor Plan

If contemporary functionality is what you are looking for, then look no further than The Hickory. With 1,932 square feet of thoughtfully designed living space, three bedrooms, and two and a half bathrooms, The Hickory is crafted to balance everyday comfort with modern style. Step inside and be greeted with a striking high-ceiling entryway that leads into the open-concept living area. The great room, dining area, and kitchen flow seamlessly together, centered around a beautiful, upgraded gourmet island that's perfect for gathering and entertaining. Just off the great room, the first-floor owner's suite provides a peaceful escape, featuring upgraded tray ceilings, a spacious walk-in closet, and a deluxe bathroom with a large shower with a built-in seat. Upstairs, a generous open loft offers a flex space that can easily become a media room, playroom, or whatever suits your lifestyle. Two secondary bedrooms, each with walk-in closets, along with a full hallway bathroom to complete the...

**\$349,900**



**3 Bedrooms**



**2.5 Bathrooms**



**1,932 Sq.Ft.**



**2 Stories**



**2 Car Garage**

**CONTACT US 757-550-2617**

**WWW.CESHOMES.COM**



Chesapeake Homes continuously improves home designs and reserves the right to modify home features and specifications without notice or obligation. Square footage and measurements are approximate. Renderings of elevations are artist's concepts. Floor plans vary per elevation. Chesapeake Homes standard features vary by home design and location, please refer to the included features sheet for the community to define specifications. This brochure is for illustrative purposes and not part of the legal contract. Please ask Sales Associate for complete details. © 2026 Chesapeake Homes. Current information as 24th February 2026

## FIRST FLOOR

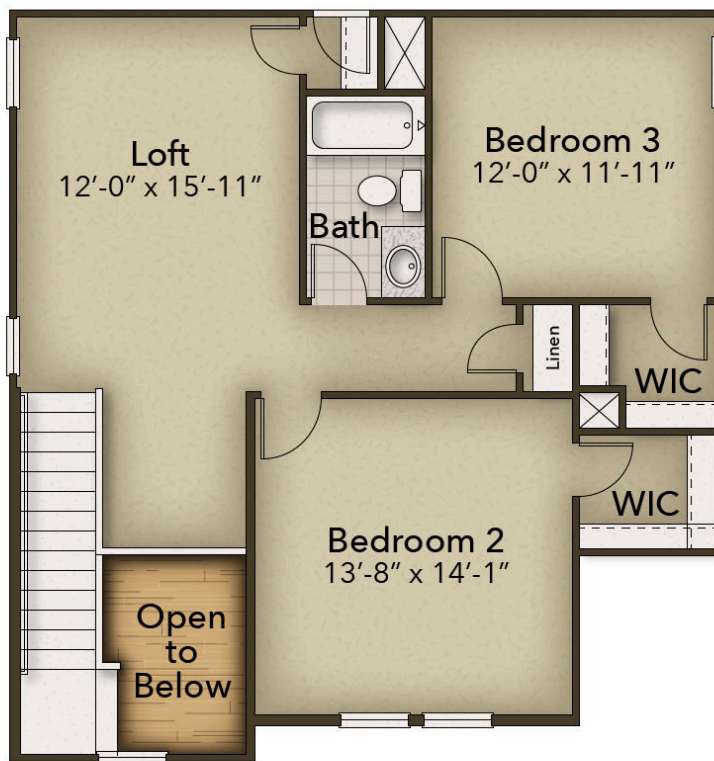


CONTACT US 757-550-2617

WWW.CHESHOMES.COM



## SECOND FLOOR



CONTACT US 757-550-2617

[WWW.CHESHOMES.COM](http://WWW.CHESHOMES.COM)



Chesapeake Homes continuously improves home designs and reserves the right to modify home features and specifications without notice or obligation. Square footage and measurements are approximate. Renderings of elevations are artist's concepts. Floor plans vary per elevation. Chesapeake Homes standard features vary by home design and location, please refer to the included features sheet for the community to define specifications. This brochure is for illustrative purposes and not part of the legal contract. Please ask Sales Associate for complete details. © 2026 Chesapeake Homes. Current information as 24th February 2026