



From \$374,900

The Holly layout is a great example of how Chesapeake Homes create spaces that are both functional and beautiful. This 2,343 square foot home provides homeowners with an included three-car garage, an open-concept great room, a kitchen, and a dining room that leads to an outdoor patio. An optional indoor fireplace, sliding glass door to the patio, or rear covered porch allows buyers to make the home specific to their needs. Love having people over for dinner? Choices to change up your kitchen include a gourmet island, double ovens, or a desk in the kitchen. On the ground floor, you will also find a bedroom and powder room that can be upgraded to a full bathroom. On the second floor, you will find two spacious bedrooms both with walk-in closets and a full bathroom. The rest of the floor is the open loft that leads to the Owner's suite and laundry room with an optional countertop and tub. The owner's suite has tray ceilings, an option for a deluxe bathroom, and a long walk-in closet. It will be the perfect spot to lay your head down after a long ...



4 Bedrooms



2.5 Bathrooms



2,343 Sq.Ft.



2 Stories



2 Car Garage

CONTACT US 757-550-2617

WWW.CESHOMES.COM



FIRST FLOOR

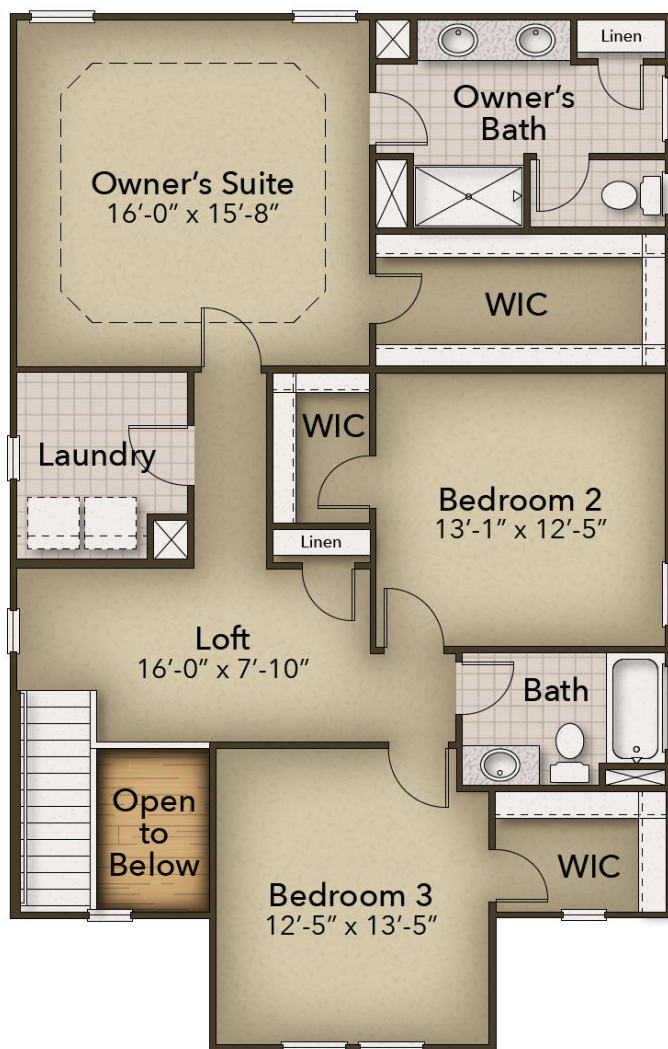


CONTACT US 757-550-2617

WWW.CESHOMES.COM



SECOND FLOOR



CONTACT US 757-550-2617

WWW.CESHOMES.COM

