



Goose Marsh Community

The Cherry Grove Floor Plan

Cherry Grove - Designed for the Way You Live Welcome to the Cherry Grove, where everyday life feels like a retreat. With over 2,400 square feet, this thoughtfully designed home offers four bedrooms and three full baths, including a flexible second floor perfect for guests, hobbies, or working from home. Step inside from the covered front porch or two-car garage into a smart drop zone—ideal for stashing bags, shoes, or sandy flip-flops. The open-concept great room is the heart of the home, flowing into a covered porch where sunrises and starry nights become part of your routine. On the main floor, the owner's suite delivers comfort and style with a tray ceiling, spacious walk-in closet, and a spa-like bathroom. Two additional bedrooms are tucked away for privacy and convenience. Whether you're entertaining, relaxing, or simply enjoying the coastal vibe, Cherry Grove is a place you'll love to come home to.

\$389,900



4 Bedrooms



3.0 Bathrooms



2,391 Sq.Ft.



2 Stories



2 Car Garage

CONTACT US 757-550-2617

WWW.CESHOMES.COM



Chesapeake Homes continuously improves home designs and reserves the right to modify home features and specifications without notice or obligation. Square footage and measurements are approximate. Renderings of elevations are artist's concepts. Floor plans vary per elevation. Chesapeake Homes standard features vary by home design and location, please refer to the included features sheet for the community to define specifications. This brochure is for illustrative purposes and not part of the legal contract. Please ask Sales Associate for complete details. © 2025 Chesapeake Homes. Current information as 30th July 2025

FIRST FLOOR



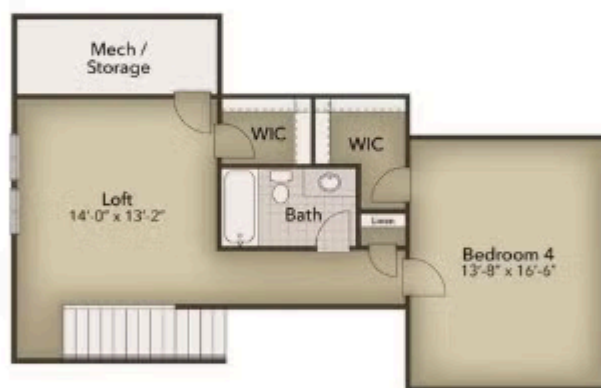
CONTACT US 757-550-2617

WWW.CHESHOMES.COM



Chesapeake Homes continuously improves home designs and reserves the right to modify home features and specifications without notice or obligation. Square footage and measurements are approximate. Renderings of elevations are artist's concepts. Floor plans vary per elevation. Chesapeake Homes standard features vary by home design and location, please refer to the included features sheet for the community to define specifications. This brochure is for illustrative purposes and not part of the legal contract. Please ask Sales Associate for complete details. © 2025 Chesapeake Homes. Current information as 30th July 2025

SECOND FLOOR



CONTACT US 757-550-2617

WWW.CHESHOMES.COM



Chesapeake Homes continuously improves home designs and reserves the right to modify home features and specifications without notice or obligation. Square footage and measurements are approximate. Renderings of elevations are artist's concepts. Floor plans vary per elevation. Chesapeake Homes standard features vary by home design and location, please refer to the included features sheet for the community to define specifications. This brochure is for illustrative purposes and not part of the legal contract. Please ask Sales Associate for complete details. © 2025 Chesapeake Homes. Current information as 30th July 2025