



Goose Marsh Community The Cherry Grove Floor Plan

At 2,391 square feet, the Cherry Grove is a spacious retreat featuring coastal-inspired architectural accents, inviting outdoor living areas, and a large, open great room designed for everyday comfort and entertaining. Enter the Cherry Grove from the covered front porch or three-car garage, where a convenient drop zone connects seamlessly to the laundry area, making daily routines simple and organized. The kitchen flows effortlessly into the great room and dining area, creating an open-concept layout ideal for gathering with family and friends. Just beyond, a picturesque covered porch extends your living space outdoors, offering the perfect setting to enjoy peaceful evenings or morning sunrises. The owner's suite is thoughtfully positioned on the first floor alongside two additional bedrooms, and features a spacious walk-in closet, tray ceiling, double vanity, and a deluxe seated shower. A fourth bedroom and full bathroom provide additional space for guests, family members, or a...

\$499,900



4 Bedrooms



3.0 Bathrooms



2,391 Sq.Ft.



1 Stories



3 Car Garage

CONTACT US 757-550-2617

WWW.CESHOMES.COM

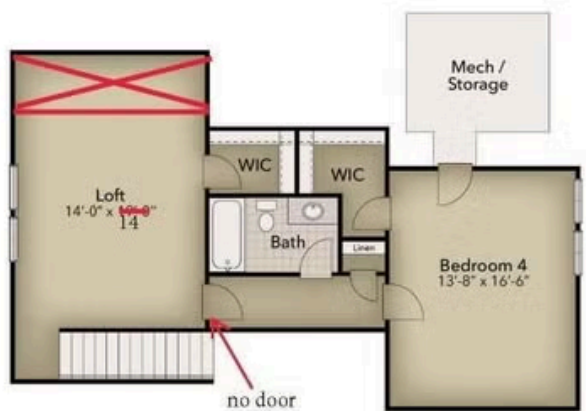




CONTACT US 757-550-2617

WWW.CESHOMES.COM





CONTACT US 757-550-2617

WWW.CESHOMES.COM

