



From \$329,900

Photos of Similar Home Step inside The Willow, and you'll immediately understand why Chesapeake Homes are renowned for crafting homes that are both livable and functional. This 2,146 square-foot haven features four cozy bedrooms and two and a half lavish baths, all meticulously designed to bring form and function together seamlessly. The open-concept living area and expansive kitchen island create a warm, inviting atmosphere that will quickly become the hub of your family's daily comings and goings. Venture outside to the optional covered porch or patio to bask in the Carolina sunshine, and take comfort in knowing that there's plenty of room for all your possessions thanks to the ample closet space in each bedroom. The Willow is more than just a house; it's a place where memories are made, dreams come to life, and families thrive.



4 Bedrooms



2.5 Bathrooms



2,146 Sq.Ft.



2 Stories



2 Car Garage

CONTACT US 757-550-2617

WWW.CHESHOMES.COM



Chesapeake Homes continuously improves home designs and reserves the right to modify home features and specifications without notice or obligation. Square footage and measurements are approximate. Renderings of elevations are artist's concepts. Floor plans vary per elevation. Chesapeake Homes standard features vary by home design and location, please refer to the included features sheet for the community to define specifications. This brochure is for illustrative purposes and not part of the legal contract. Please ask Sales Associate for complete details. © 2025 Chesapeake Homes. Current information as 30th April 2025

FIRST FLOOR



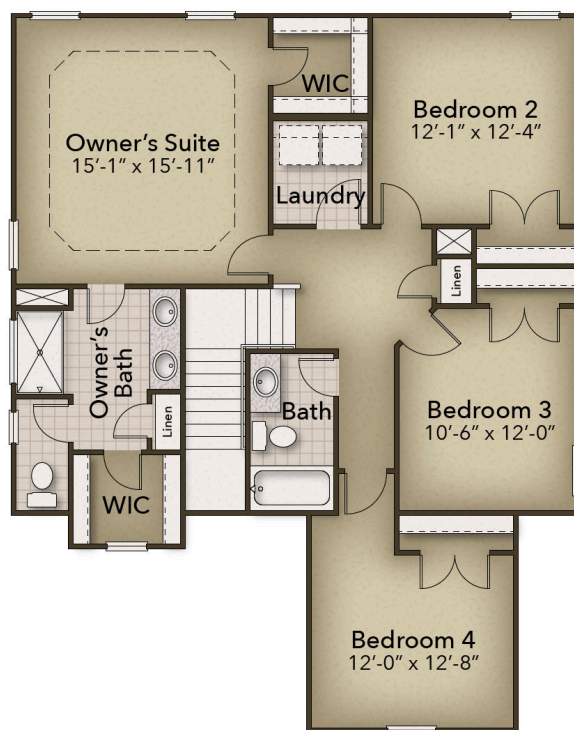
CONTACT US 757-550-2617

WWW.CHESHOMES.COM



Chesapeake Homes continuously improves home designs and reserves the right to modify home features and specifications without notice or obligation. Square footage and measurements are approximate. Renderings of elevations are artist's concepts. Floor plans vary per elevation. Chesapeake Homes standard features vary by home design and location, please refer to the included features sheet for the community to define specifications. This brochure is for illustrative purposes and not part of the legal contract. Please ask Sales Associate for complete details. © 2025 Chesapeake Homes. Current information as 30th April 2025

SECOND FLOOR



CONTACT US 757-550-2617

WWW.CHESHOMES.COM



Chesapeake Homes continuously improves home designs and reserves the right to modify home features and specifications without notice or obligation. Square footage and measurements are approximate. Renderings of elevations are artist's concepts. Floor plans vary per elevation. Chesapeake Homes standard features vary by home design and location, please refer to the included features sheet for the community to define specifications. This brochure is for illustrative purposes and not part of the legal contract. Please ask Sales Associate for complete details. © 2025 Chesapeake Homes. Current information as 30th April 2025