



## Coastal Club of the Carolinas Community

### The Hibiscus Floor Plan

With 1,944 square feet of living space, the Hibiscus is one of the largest of the Villas holds beauty and utility in high regard. Upon entering the home, you'll be greeted by the double-height foyer which leads you to the wide-open downstairs living space. The open concept layout and large, 7' kitchen island lends itself to always being the home's gathering place. When you're ready to get outside, enjoy the ocean air while relaxing on your rear-covered porch. Upstairs, you will find two bedrooms, a full bathroom, and an open loft. The Hibiscus is perfect for your family or a revolving door of visitors who can't wait to enjoy coastal living with you.

**\$374,900**



**3 Bedrooms**



**2.5 Bathrooms**



**1,782 Sq.Ft.**



**2 Stories**



**2 Car Garage**



## FIRST FLOOR

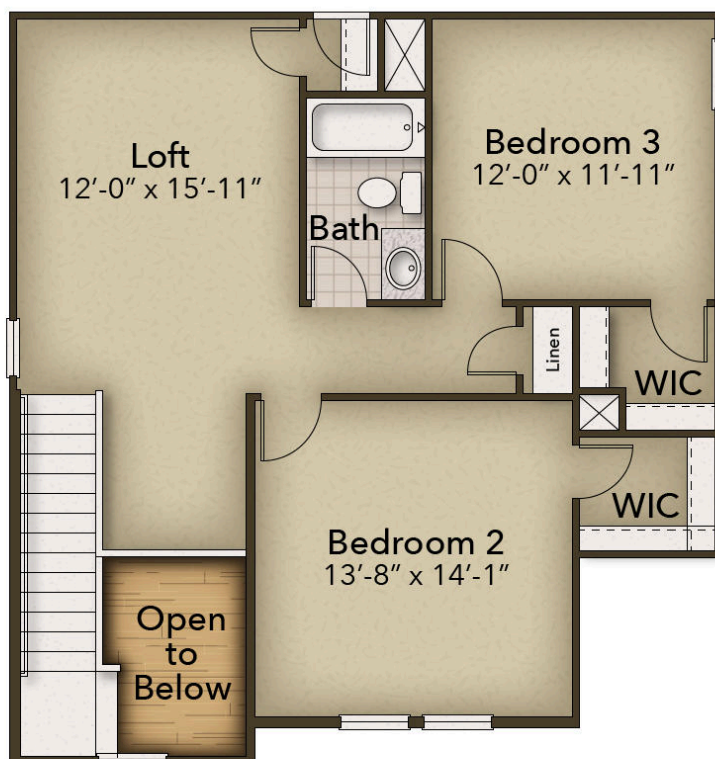


CONTACT US 757-550-2617

WWW.CESHOMES.COM



## SECOND FLOOR



CONTACT US 757-550-2617

WWW.CESHOMES.COM

