



## Coastal Club of the Carolinas Community

### The Jasmine Floor Plan

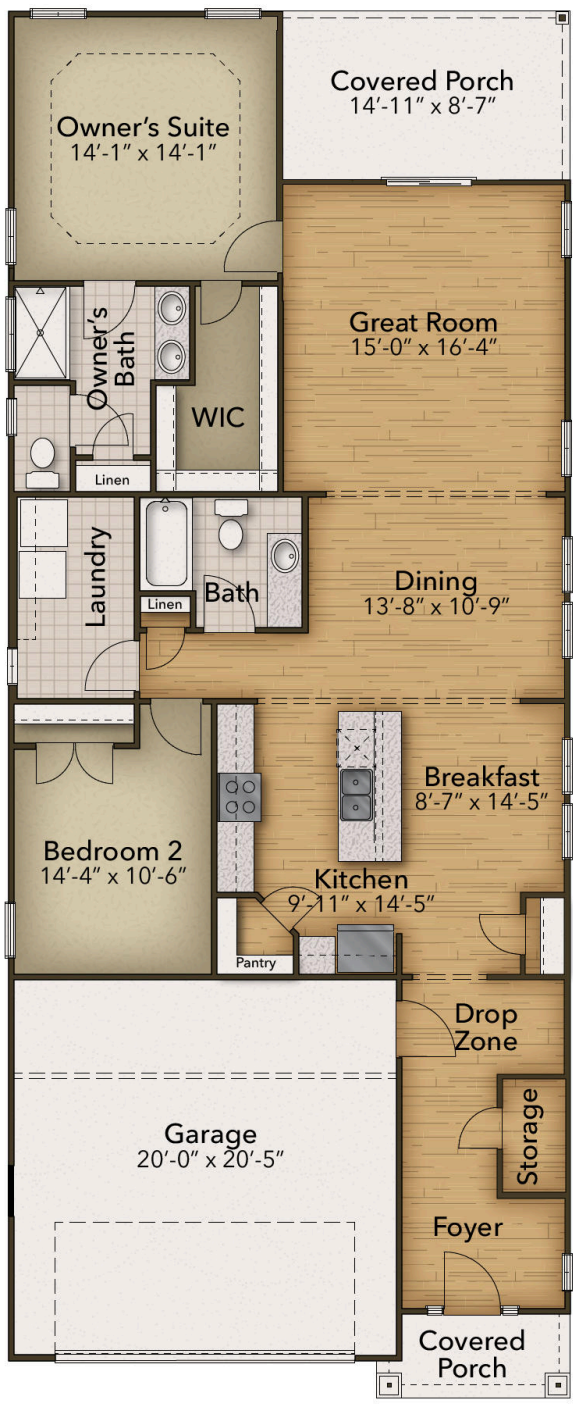
The Jasmine is thoughtfully scaled and avoids the bigger is a better approach. With 1,607 square feet of living space, you and your guests can enjoy luxury in an efficient space. With architectural details like tray ceilings in both the great room and owner's suite, along with plenty of windows to keep your space light and airy, you'll delight in choosing the finishing details in the home. The Jasmine offers ample storage space and closets throughout the home, along with cabinets and a bench in the drop zone, keeping your living spaces free from clutter. The Jasmine is the perfect place to call home. Schedule your tour today!

**\$359,900**

 2 Bedrooms

 2.5 Bathrooms

**FIRST FLOOR**



**CONTACT US 757-550-2617**  
**WWW.CESHOMES.COM**