

From \$329,900

Welcome to the Primrose! Step into over 1,600 square feet of luxurious first-floor living space. Enjoy upgraded features throughout the home such as LVP flooring in the foyer, kitchen, dining room, living room and primary bath. As well as shaker style cabinets, stainless appliances and quartz countertops. Upon entering from the covered porch, you'll be greeted by 2 bedrooms and a full bath on your left - perfect for hosting guests in their own serene retreat. Continuing on, you'll discover a harmonious flow between the kitchen, dining room, and great room. A stunning kitchen island offers additional seating and counter space for all your culinary needs and entertaining endeavors. At the rear of the home, you'll find the tucked-away owner's suite featuring a tray ceiling, a spacious walk-in closet, and an elegant owner's bathroom. Savor balmy summer evenings with loved ones on your rear covered porch. Embrace the comfort and elegance of the Primrose - make it your home today!



3 Bedrooms



2.0 Bathrooms



1,605 Sq.Ft.



1 Stories



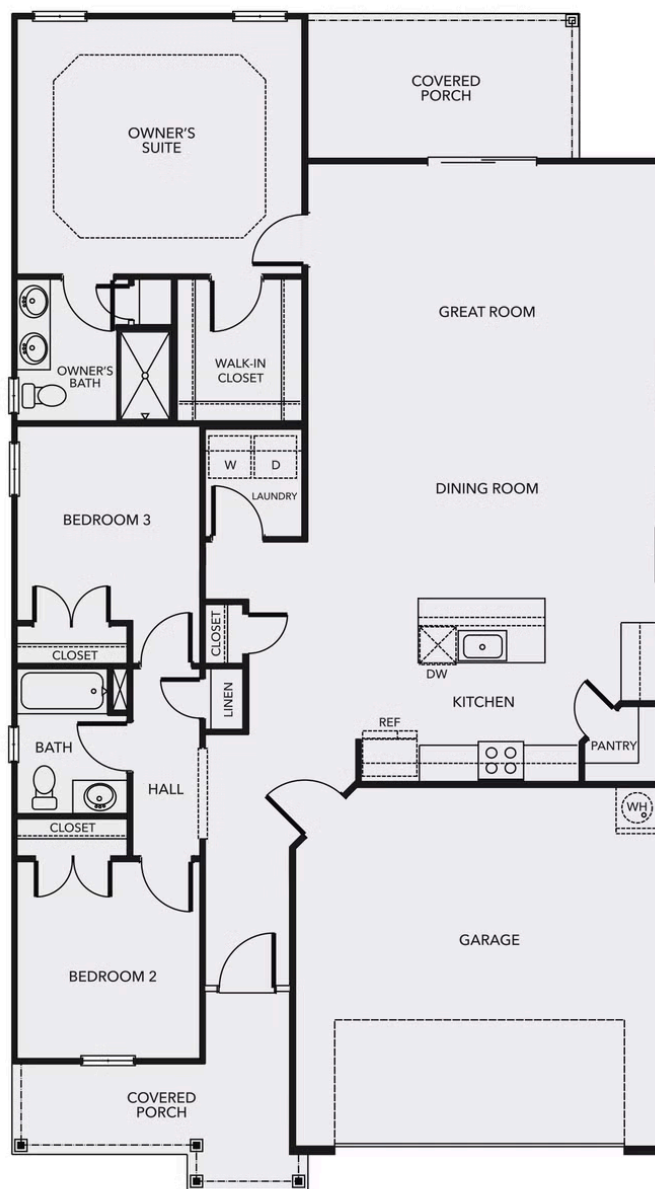
2 Car Garage

CONTACT US 757-550-2617

WWW.CESHOMES.COM



Chesapeake Homes continuously improves home designs and reserves the right to modify home features and specifications without notice or obligation. Square footage and measurements are approximate. Renderings of elevations are artist's concepts. Floor plans vary per elevation. Chesapeake Homes standard features vary by home design and location, please refer to the included features sheet for the community to define specifications. This brochure is for illustrative purposes and not part of the legal contract. Please ask Sales Associate for complete details. © 2026 Chesapeake Homes. Current information as 9th March 2026



CONTACT US 757-550-2617

WWW.CESHOMES.COM

