



Highgate Community

The Holly Floor Plan

From the moment you walk into the Holly floorplan, you'll see why Chesapeake Homes has a reputation of creating livable, functional spaces that you and your family will enjoy for years to come. Featuring 2,343 square feet of living space and four bedrooms and three bathrooms, the Holly showcases how form and function works together effortlessly. The open concept layout and large, 9' kitchen island lends itself to always being the home's gathering place. When you're ready to get outside, enjoy the Carolina blue skies while relaxing on your rear covered porch. Storage space abounds in the walk-in closets that each bedroom has, so everyone is a winner with ample space. With a full bathroom on the first floor, you can accommodate your guests with privacy and elegance. *Photos of Similar Home Shown

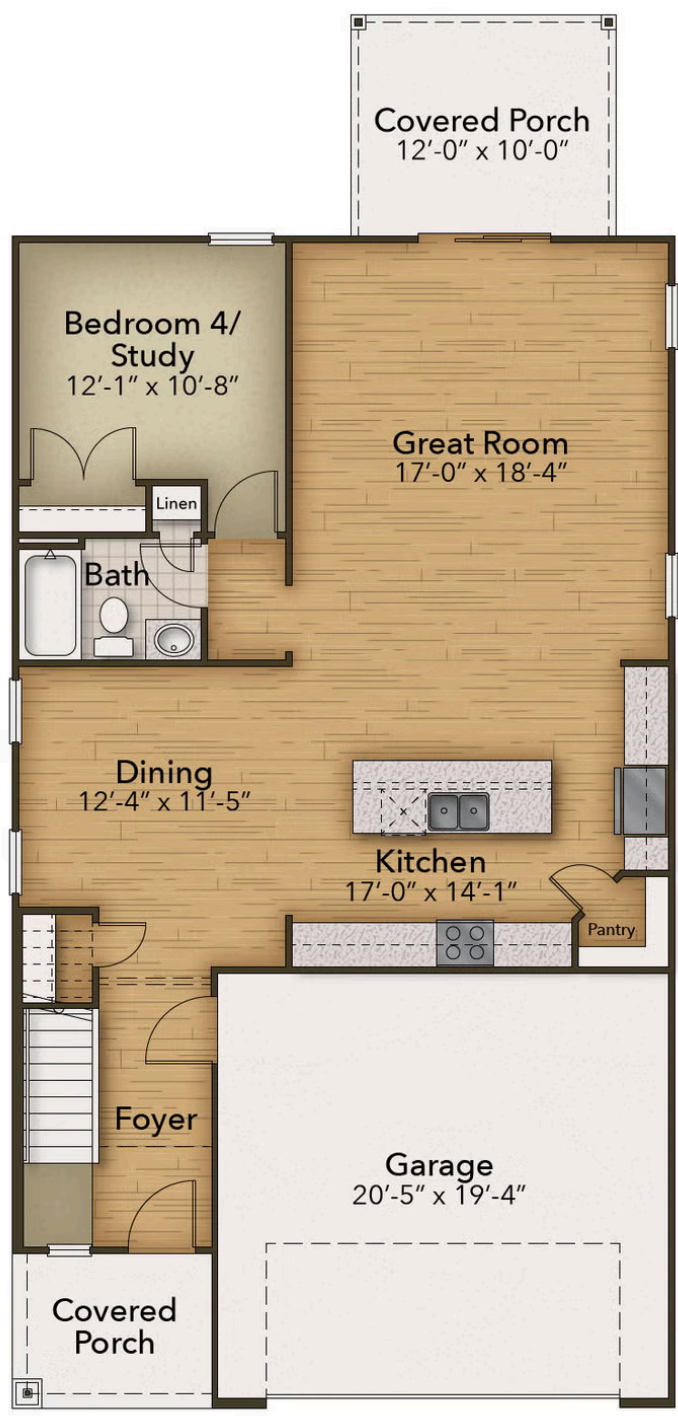
\$449,900

 4 Bedrooms

 3.0 Bathrooms

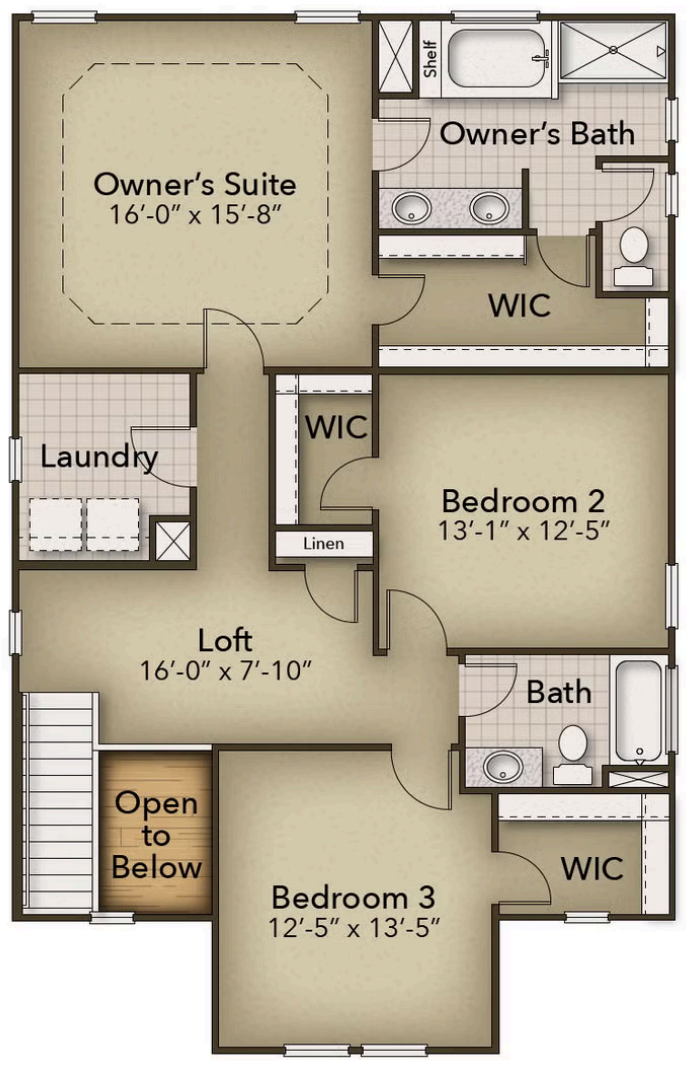


FIRST FLOOR



CONTACT US 757-550-2617
WWW.CESHOMES.COM

SECOND FLOOR



CONTACT US 757-550-2617

WWW.CESHOMES.COM