



## Highgate Community

### The Maple Floor Plan

The Maple beautifully ties indoor and outdoor living together. From the moment you walk up to the sweeping front porch, you can envision sitting on the porch enjoying the summer breeze and waving at your neighbors as they stroll by. Once you're inside, you'll experience the open flow of the great room, kitchen, and dining room, providing ample views of your backyard and keeping the open space light and bright. The upstairs of the Maple can elevate your standard of living. A large laundry room is conveniently located in the hallway. The loft, which can serve your family as a playroom, workout room, or media room. For the Owner's Suite, you'll have fine details like a tray ceiling, a walk-in closet, and a deluxe en-suite bathroom. Come see us and discover if the Maple can be your family's perfect home! \*\*Please call our Online Sales Consultants at 757-550-2617 to learn more!

**\$399,900**



**3 Bedrooms**



**2.5 Bathrooms**



**2,160 Sq.Ft.**



**2 Stories**



**2 Car Garage**

**CONTACT US 757-550-2617**

**WWW.CESHOMES.COM**



## FIRST FLOOR



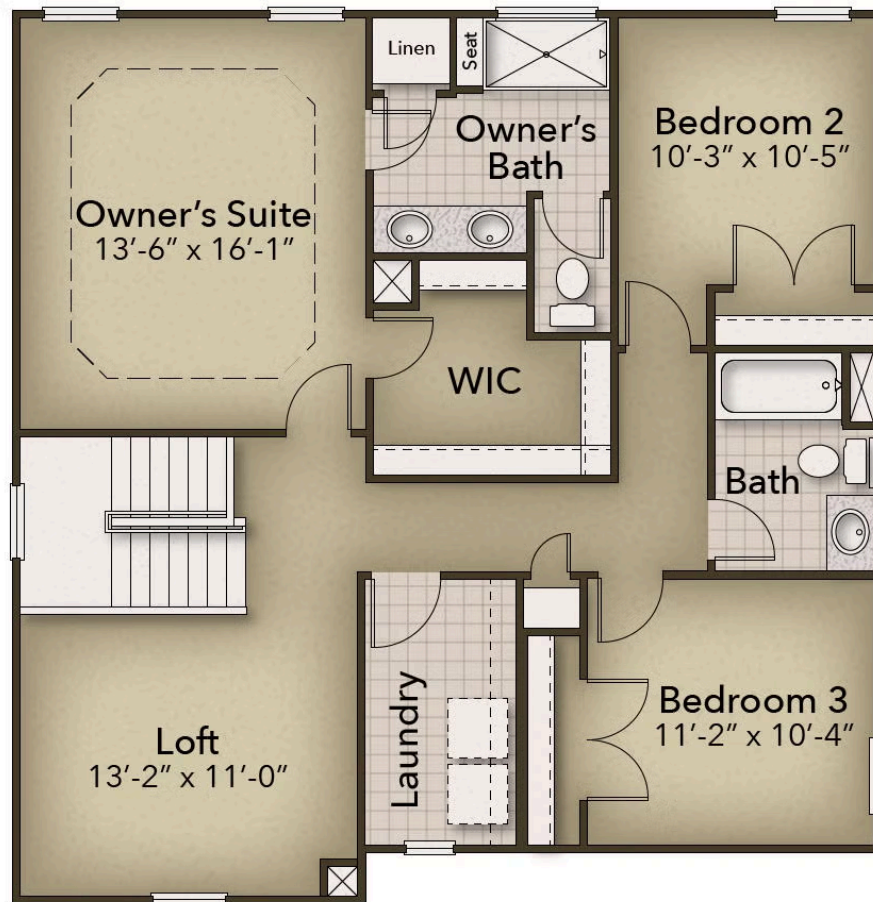
CONTACT US 757-550-2617

WWW.CESHOMES.COM



Chesapeake Homes continuously improves home designs and reserves the right to modify home features and specifications without notice or obligation. Square footage and measurements are approximate. Renderings of elevations are artist's concepts. Floor plans vary per elevation. Chesapeake Homes standard features vary by home design and location, please refer to the included features sheet for the community to define specifications. This brochure is for illustrative purposes and not part of the legal contract. Please ask Sales Associate for complete details. © 2025 Chesapeake Homes. Current information as 5th September 2025

## SECOND FLOOR



CONTACT US 757-550-2617

WWW.CESHOMES.COM



Chesapeake Homes continuously improves home designs and reserves the right to modify home features and specifications without notice or obligation. Square footage and measurements are approximate. Renderings of elevations are artist's concepts. Floor plans vary per elevation. Chesapeake Homes standard features vary by home design and location, please refer to the included features sheet for the community to define specifications. This brochure is for illustrative purposes and not part of the legal contract. Please ask Sales Associate for complete details. © 2025 Chesapeake Homes. Current information as 5th September 2025