



## Highgate Community

### The Maple Floor Plan

The Maple beautifully ties indoor and outdoor living together. From the moment you walk up to the sweeping front porch, you can envision sitting on the porch enjoying the summer breeze and waving at your neighbors as they stroll by. Once you're inside, you'll experience the open flow of the great room, kitchen and dining room, providing ample views of your backyard and keeping the open space light and bright. The upstairs of the Maple can elevate your standard of living. A large laundry room is conveniently located in the hallway. The loft, which can serve your family as a playroom or media room. For the Owner's Suite, you'll have fine details like a tray ceiling, walk-in closet and several options to enhance the en-suite bathroom. Come see us and discover if the Maple can be your family's perfect home! \*Please reach out to learn more about this home and secure your VIP tour time at 919-352-9435! Photos of a similar home\*

**\$390,900**



**3 Bedrooms**



**2.5 Bathrooms**



**2,160 Sq.Ft.**



**2 Stories**



**2 Car Garage**

**CONTACT US 757-550-2617**

**WWW.CESHOMES.COM**



## FIRST FLOOR

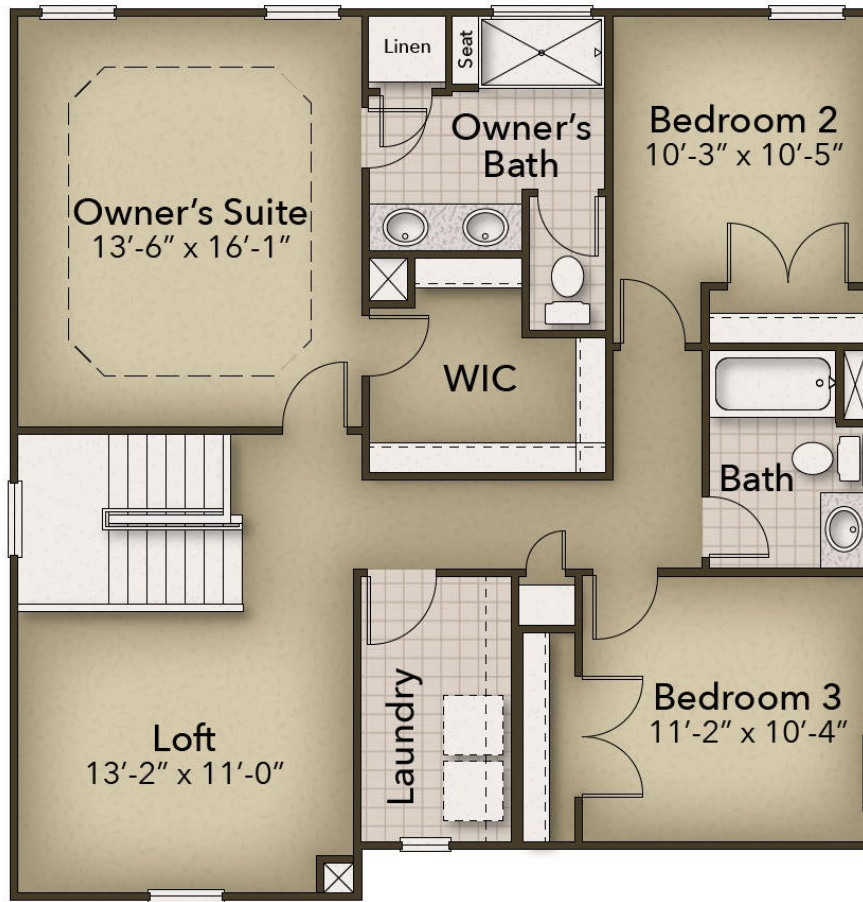


**CONTACT US** 757-550-2617

**WWW.CESHOMES.COM**



## SECOND FLOOR



CONTACT US 757-550-2617

WWW.CESHOMES.COM

