



From \$394,900

From the moment you walk into the Holly floorplan, you'll see why Chesapeake Homes has a reputation of creating livable, functional spaces that you and your family will enjoy for years to come. Featuring 2,343 square feet of living space and four bedrooms and two and a half baths, the Holly showcases how form and function works together effortlessly. The open concept layout and large, 9' kitchen island lends itself to always being the home's gathering place. When you're ready to get outside, enjoy the Carolina blue skies while relaxing on your patio or rear covered porch. Storage space abounds in the walk-in closets that each bedroom has, so everyone is a winner with ample space. With the option to turn the downstairs powder room into a full bathroom, you can accommodate your guests with privacy and elegance. After visiting the Chesapeake Homes Design Gallery, The Holly will be perfectly personalized for you.



4 Bedrooms



2.5 Bathrooms



2,343 Sq.Ft.



2 Stories



2 Car Garage

CONTACT US 757-550-2617

WWW.CESHOMES.COM



FIRST FLOOR

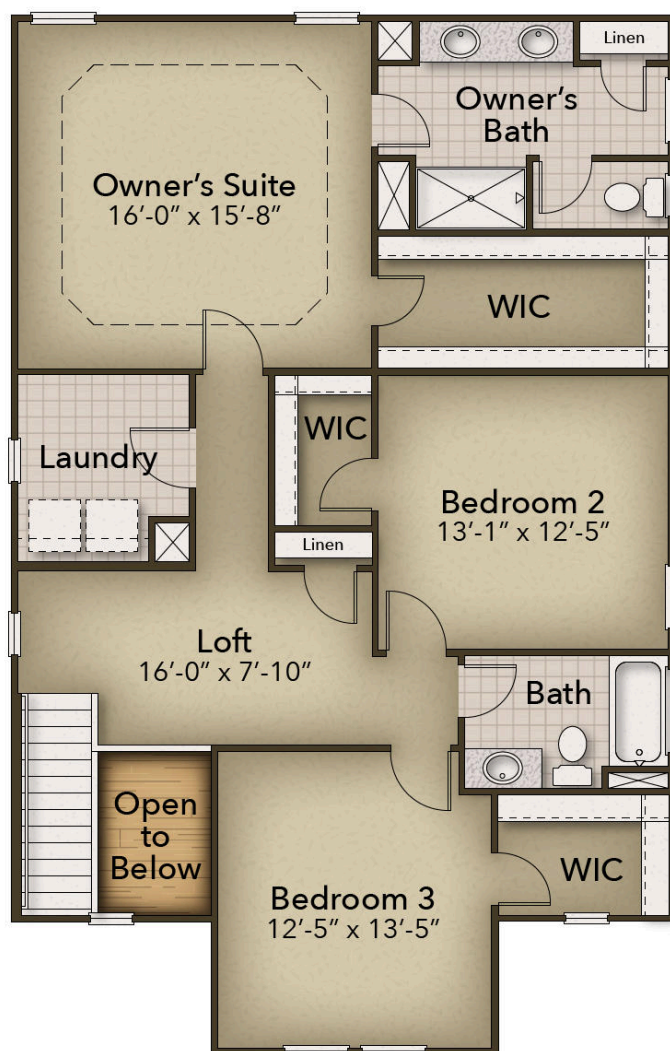


CONTACT US 757-550-2617

WWW.CESHOMES.COM



SECOND FLOOR



CONTACT US 757-550-2617

WWW.CESHOMES.COM

