



From \$369,900

The Maple beautifully ties indoor and outdoor living together. From the moment you walk up to the sweeping front porch, you can envision sitting on the porch enjoying the summer breeze and waving at your neighbors as they stroll by. Once you're inside, you'll experience the open flow of the great room, kitchen and dining room, providing ample views of your backyard and keeping the open space light and bright. With the Maple's optional features like a rear covered porch, gas fireplace and gourmet kitchen, you can enhance the living space to suit your taste. The upstairs of the Maple can elevate your standard of living. A large laundry room is conveniently located in the hallway and can accommodate an optional laundry sink and cabinets to make the best use of the space. The loft, which can serve your family as a playroom or media room, can also be converted into a fourth bedroom depending on what will make the most sense for your family's needs. For the Owner's Suite, you'll have fine details like a tray ceiling, walk-in closet and several options to enhance the en-suite bathroom. Come see us and discover ...



3 Bedrooms



2.5 Bathrooms



2,160 Sq.Ft.



2 Stories



2 Car Garage

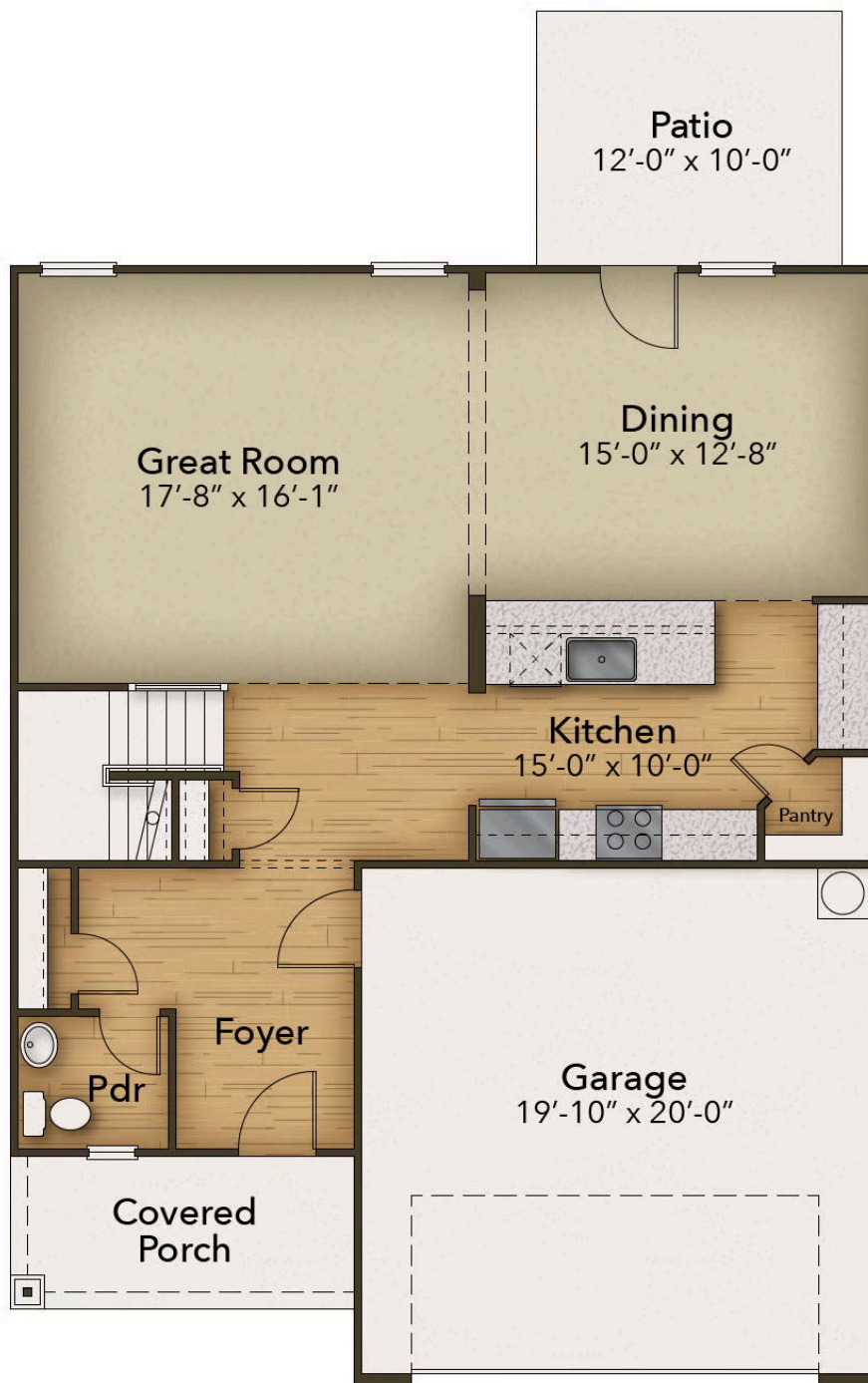
CONTACT US 757-550-2617

WWW.CESHOMES.COM



Chesapeake Homes continuously improves home designs and reserves the right to modify home features and specifications without notice or obligation. Square footage and measurements are approximate. Renderings of elevations are artist's concepts. Floor plans vary per elevation. Chesapeake Homes standard features vary by home design and location, please refer to the included features sheet for the community to define specifications. This brochure is for illustrative purposes and not part of the legal contract. Please ask Sales Associate for complete details. © 2025 Chesapeake Homes. Current information as 30th August 2025

FIRST FLOOR



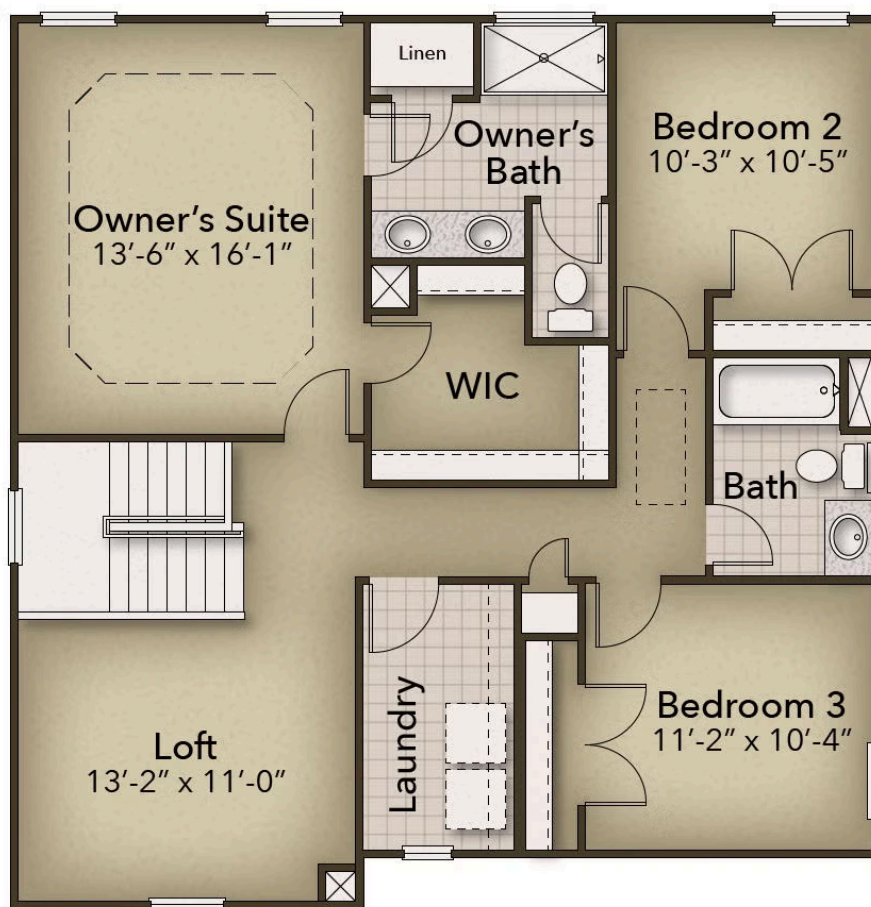
CONTACT US 757-550-2617

WWW.CHESHOMES.COM



Chesapeake Homes continuously improves home designs and reserves the right to modify home features and specifications without notice or obligation. Square footage and measurements are approximate. Renderings of elevations are artist's concepts. Floor plans vary per elevation. Chesapeake Homes standard features vary by home design and location, please refer to the included features sheet for the community to define specifications. This brochure is for illustrative purposes and not part of the legal contract. Please ask Sales Associate for complete details. © 2025 Chesapeake Homes. Current information as 30th August 2025

SECOND FLOOR

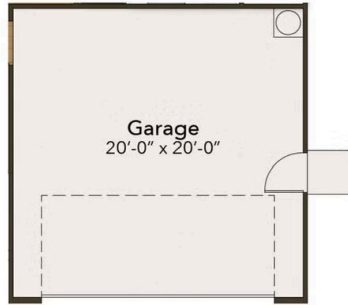


CONTACT US 757-550-2617

WWW.CHESHOMES.COM



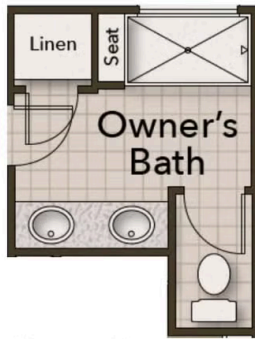
OPTIONS



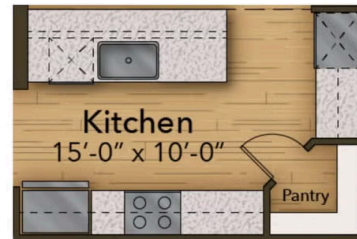
Garage Pedestrian Door



Fourth Bedroom



Deluxe Owner's Bath



Gourmet Kitchen

CONTACT US 757-550-2617

WWW.CHESHOMES.COM



Chesapeake Homes continuously improves home designs and reserves the right to modify home features and specifications without notice or obligation. Square footage and measurements are approximate. Renderings of elevations are artist's concepts. Floor plans vary per elevation. Chesapeake Homes standard features vary by home design and location, please refer to the included features sheet for the community to define specifications. This brochure is for illustrative purposes and not part of the legal contract. Please ask Sales Associate for complete details. © 2025 Chesapeake Homes. Current information as 30th August 2025