



Albemarle Plantation Community

The Boardwalk Floor Plan

Stroll into the Boardwalk with nearly 2,100 square feet of first-floor coastal-inspired features. Upon entering from a large covered front porch, discover a prominent foyer leading to a spacious main living area. Two bedrooms with large closets and a full bath are located on the left with an open dining area just ahead. A large island in the kitchen offers additional seating and a surplus of counter space for large dinner parties or cooking large meals. Enjoy smaller meals with a breakfast area looking out onto the beautiful view of your backyard. From the great room, breeze through the back door onto a large covered porch. The Boardwalk's Owner's Suite offers an enormous walk-in closet accompanied by a beautiful Owner's Bath with multiple options for a deluxe seated shower. With options for personalizing this model to fit your every need, the Boardwalk is full of possibilities. Make the Boardwalk the model you call "home" today!**Please call our Online Sales Consultants at 757-550-2617 to learn more!

\$419,900



3 Bedrooms



2.0 Bathrooms



2,189 Sq.Ft.



1 Stories



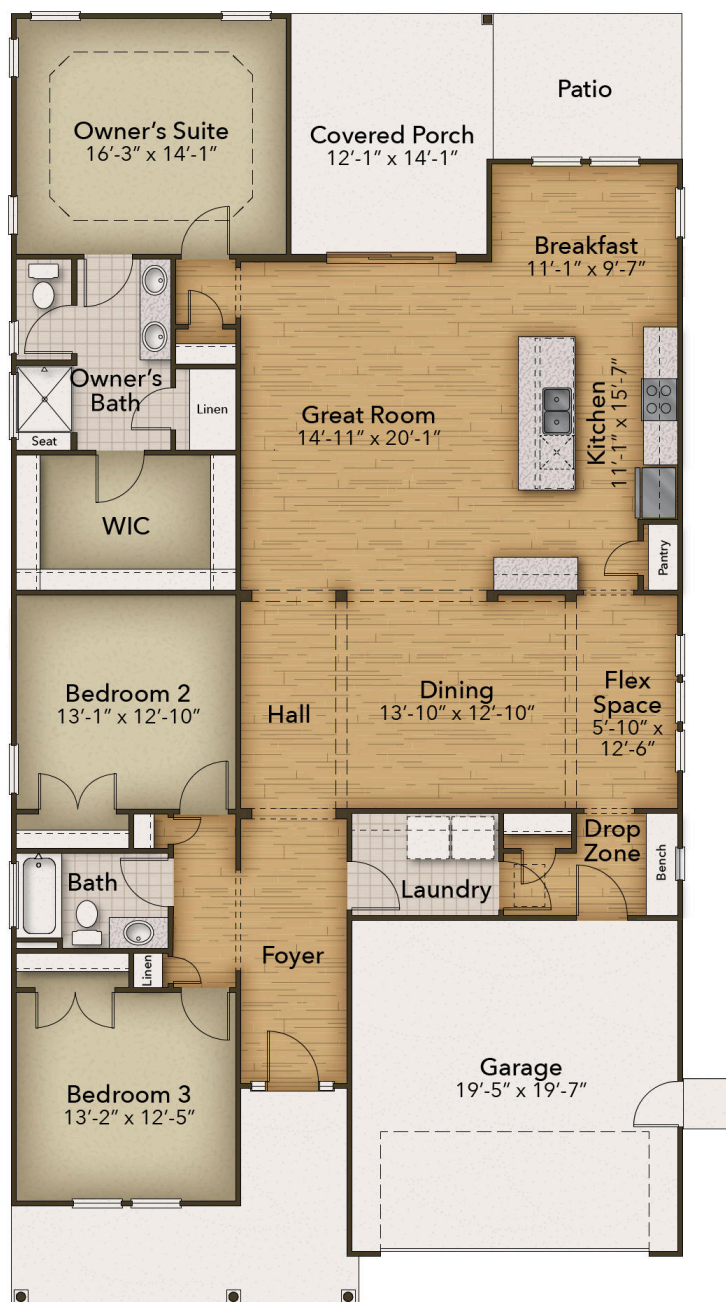
2 Car Garage

CONTACT US 757-550-2617

WWW.CESHOMES.COM



FIRST FLOOR



CONTACT US 757-550-2617

WWW.CHESHOMES.COM

