



Belmont at Albemarle Community

The Boardwalk Floor Plan

Stroll into the Boardwalk with nearly 2,200 square feet of first-floor coastal-inspired features. Upon entering from a large covered front porch, discover a prominent foyer leading to a spacious main living area. Two bedrooms with large closets and a full bath are located on the left, with an open dining area just ahead. A large island in the kitchen offers additional seating and a surplus of counter space for large dinner parties or cooking large meals. Enjoy smaller meals with a breakfast area looking out onto the beautiful view of your backyard. From the great room, breeze through the back door onto a large, covered porch. The Boardwalk's owner's suite offers an enormous walk-in closet accompanied by a beautiful owner's bath with a deluxe seated shower. Life in this community comes with more than just a beautiful home. It brings a new lifestyle. Spend your days unwinding by the resort-style pool overlooking the water, staying active in the fitness center , or enjoying a friendly...

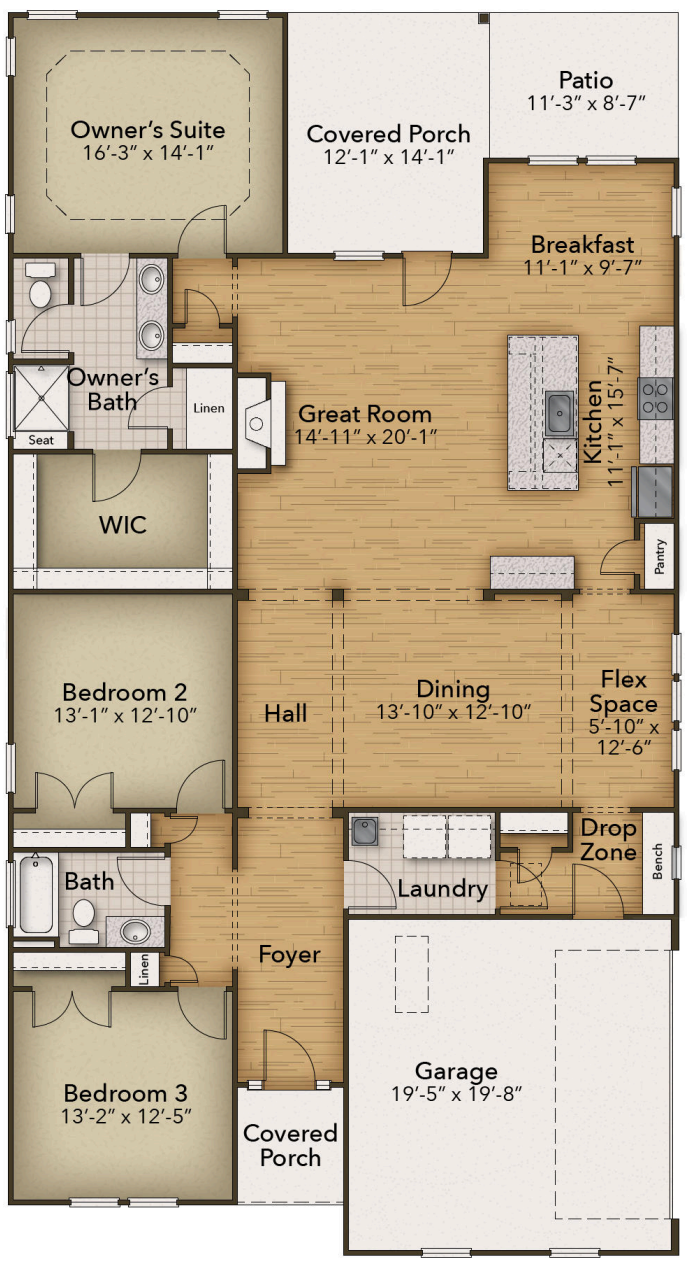
\$399,900

 **3 Bedrooms**

 **2.0 Bathrooms**



FLOORPLAN



CONTACT US 757-550-2617

WWW.CESHOMES.COM