



Belmont Park at Albemarle Community

The Boardwalk Floor Plan

Stroll into the Boardwalk with nearly 2,100 square feet of first-floor coastal-inspired features. Upon entering from a large covered front porch, discover a prominent foyer leading to a spacious main living area. Two bedrooms with large closets and a full bath are located on the left with an open dining area just ahead. A large island in the kitchen offers additional seating and a surplus of counter space for large dinner parties or cooking large meals. Enjoy smaller meals with a breakfast area looking out onto the beautiful view of your backyard. From the great room, breeze through the back door onto a large covered porch. The Boardwalk's Owner's Suite offers an enormous walk-in closet accompanied by a beautiful Owner's Bath with multiple options for a deluxe seated shower. With options for personalizing this model to fit your every need, the Boardwalk is full of possibilities. Make the Boardwalk the model you call "home" today!**Please call our Online Sales Consultants at 757-550-2617 to learn more!

\$419,900



3 Bedrooms



2.0 Bathrooms



2,189 Sq.Ft.



1 Stories



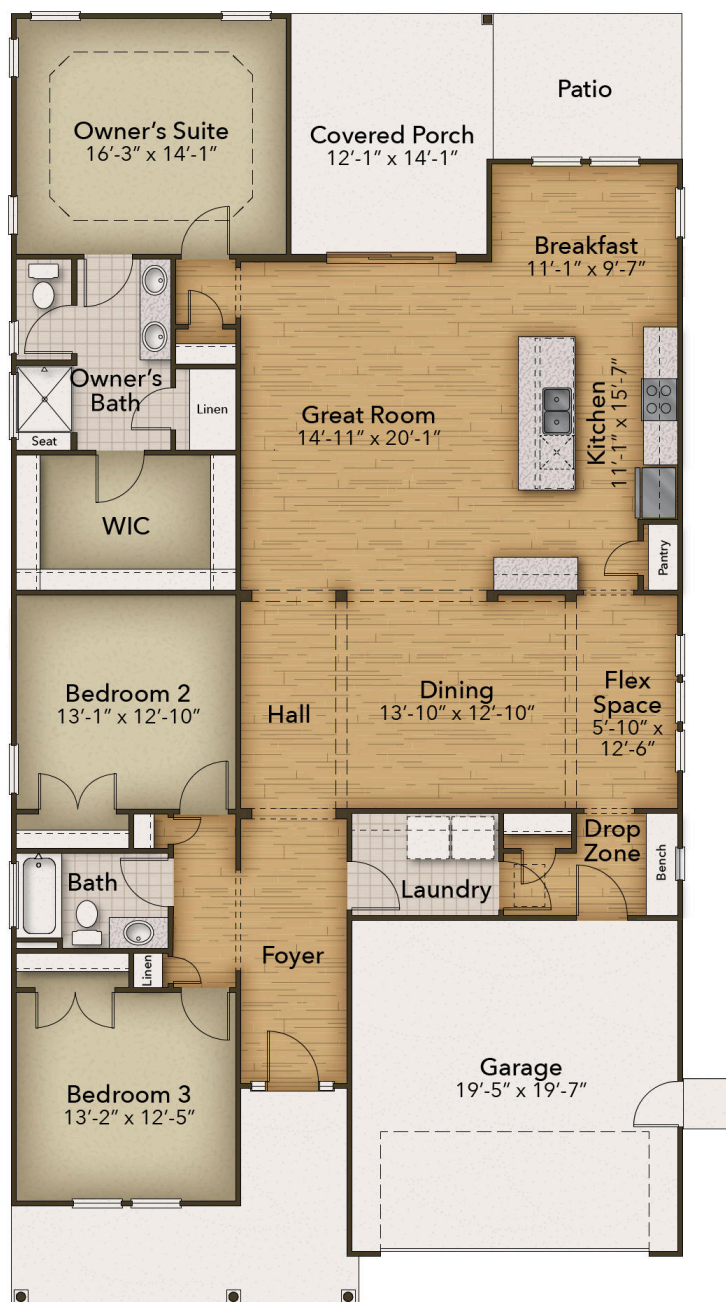
2 Car Garage

CONTACT US 757-550-2617

WWW.CESHOMES.COM



FIRST FLOOR



CONTACT US 757-550-2617

WWW.CHESHOMES.COM



Chesapeake Homes continuously improves home designs and reserves the right to modify home features and specifications without notice or obligation. Square footage and measurements are approximate. Renderings of elevations are artist's concepts. Floor plans vary per elevation. Chesapeake Homes standard features vary by home design and location, please refer to the included features sheet for the community to define specifications. This brochure is for illustrative purposes and not part of the legal contract. Please ask Sales Associate for complete details. © 2025 Chesapeake Homes. Current information as 14th August 2025