



Riverwalk Pointe at Mallory Creek - Townhomes Community The Dahlia Floor Plan

The Dahlia is a spacious townhome with 1,801 square feet, featuring 3 bedrooms and 2.5 bathrooms. Enter through the foyer to the living room, which connects to the open-concept kitchen and dining area. Relax outside on the rear patio. The owner's suite is conveniently located on the first floor, and boasts a spacious bathroom and walk-in closet. Practicality is enhanced by the first floor laundry room and attached garage access. The second floor has space and flexibility, featuring a large loft, two bedrooms, and a full bathroom. Whether you need a cozy reading nook or a home office, the upstairs loft is ready to adapt. Experience the smart layout of The Dahlia, and call us today!

\$316,900

 **3 Bedrooms**

 **2.5 Bathrooms**

 **1,801 Sq.Ft.**

 **2 Stories**

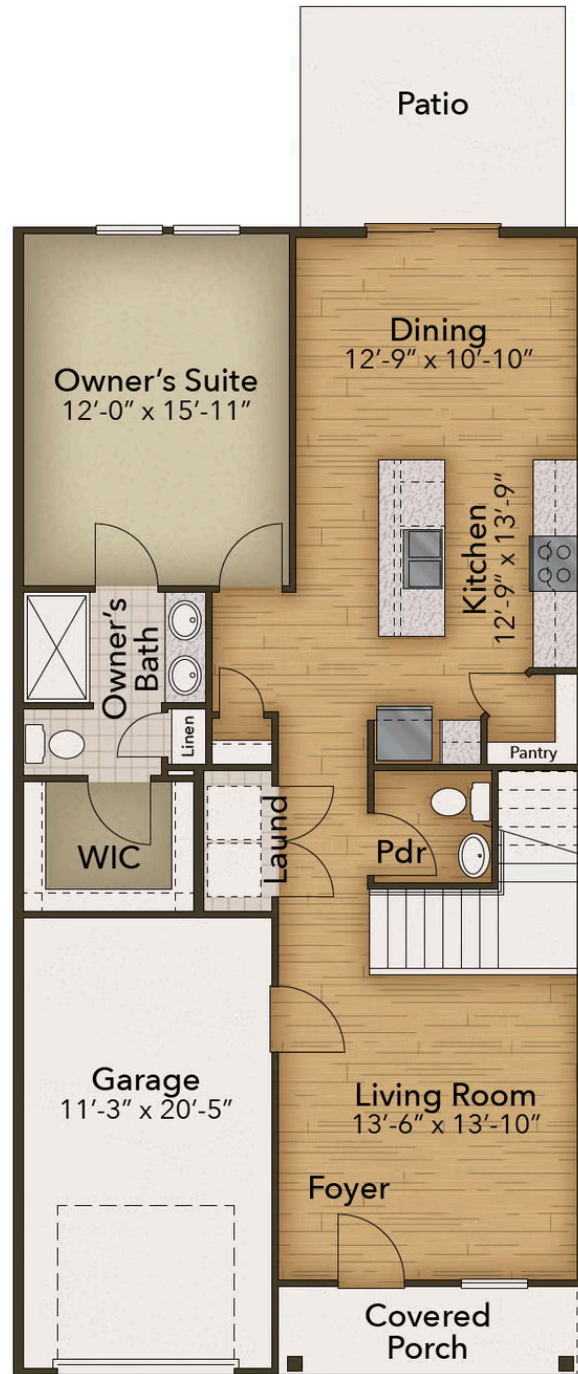
 **1 Car Garage**

CONTACT US 757-550-2617

WWW.CESHOMES.COM



FIRST FLOOR

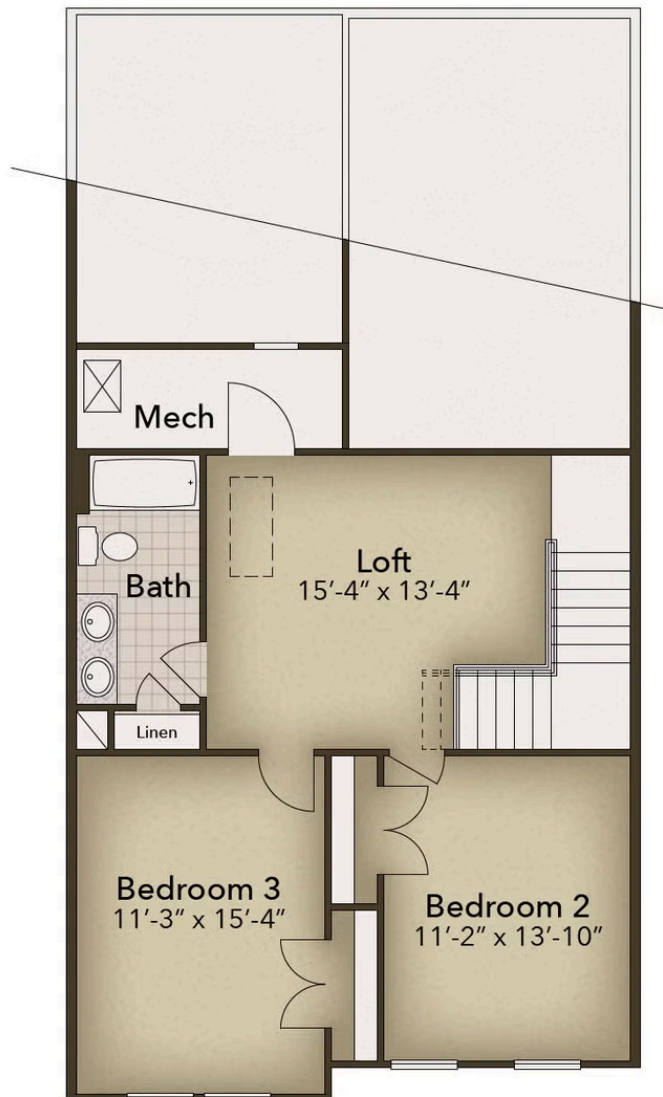


CONTACT US 757-550-2617

WWW.CESHOMES.COM



SECOND FLOOR



CONTACT US 757-550-2617

WWW.CESHOMES.COM

