



## Riverwalk Pointe at Mallory Creek Community

### The Dahlia Floor Plan

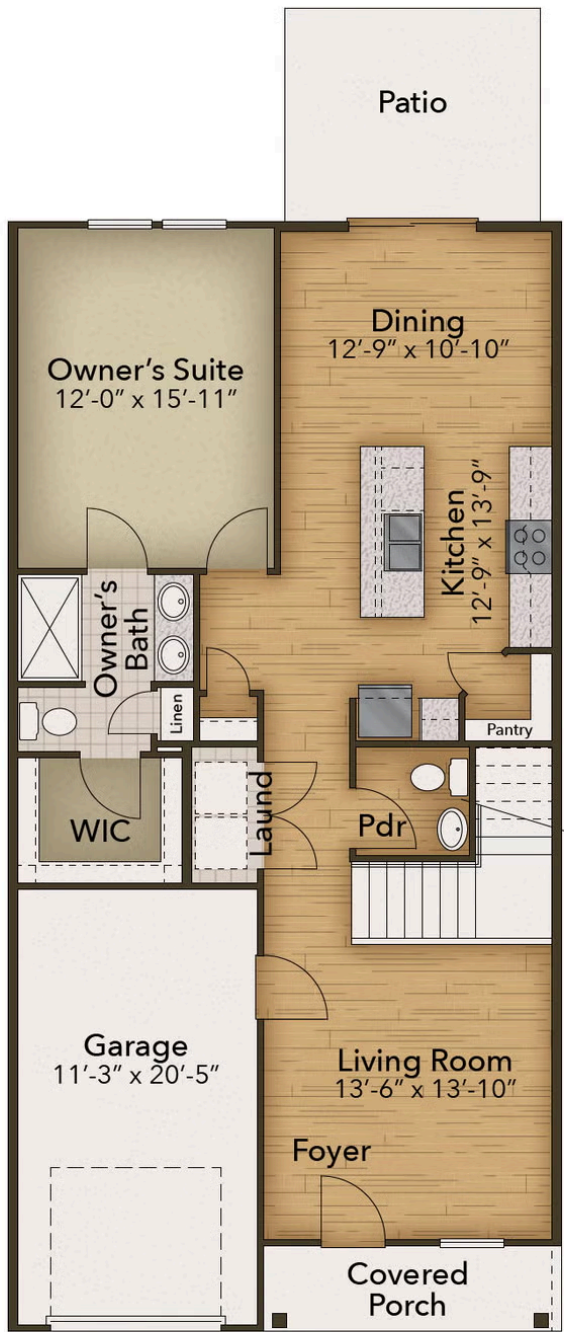
The Dahlia is a spacious townhome with 1,687 square feet, featuring 3 bedrooms and 2.5 bathrooms. Enter through the foyer to the living room, which connects to the open-concept kitchen and dining area. Relax outside on the rear patio. The owner's suite is conveniently located on the first floor, and boasts a spacious bathroom and walk-in closet. Practicality is enhanced by the first floor laundry room and attached garage access. The second floor has space and flexibility, featuring a large loft, two bedrooms, and a full bathroom. Whether you need a cozy reading nook or a home office, the upstairs loft is ready to adapt. Experience the smart layout of The Dahlia, and call us today!

*\$318,900*

 3 Bedrooms

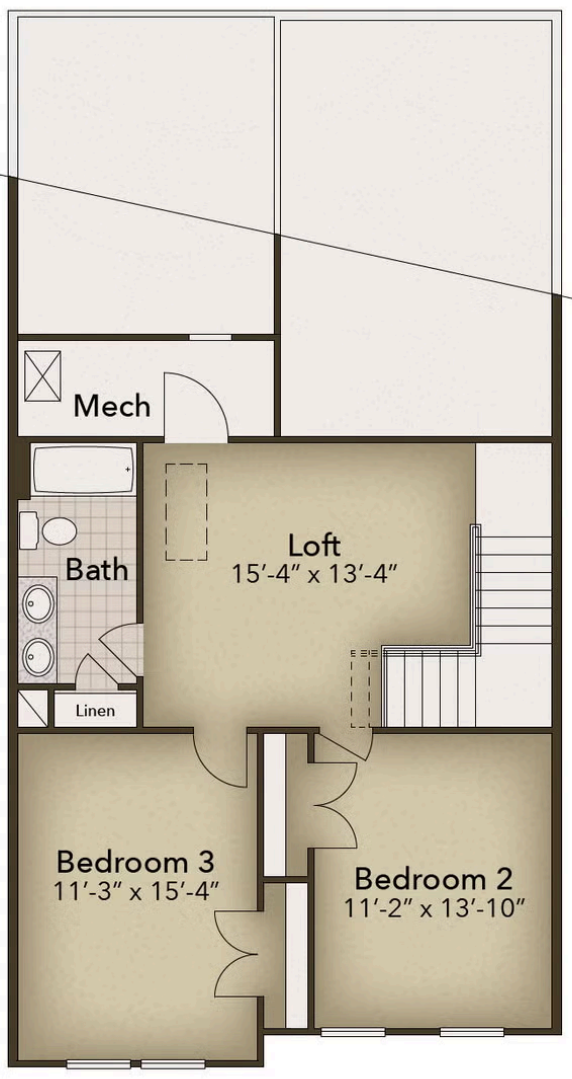
 2.5 Bathrooms

**FIRST FLOOR**



**CONTACT US 757-550-2617**  
**WWW.CESHOMES.COM**

# SECOND FLOOR



CONTACT US 757-550-2617

WWW.CESHOMES.COM