



Riverwalk Pointe at Mallory Creek Community

The Dahlia Floor Plan

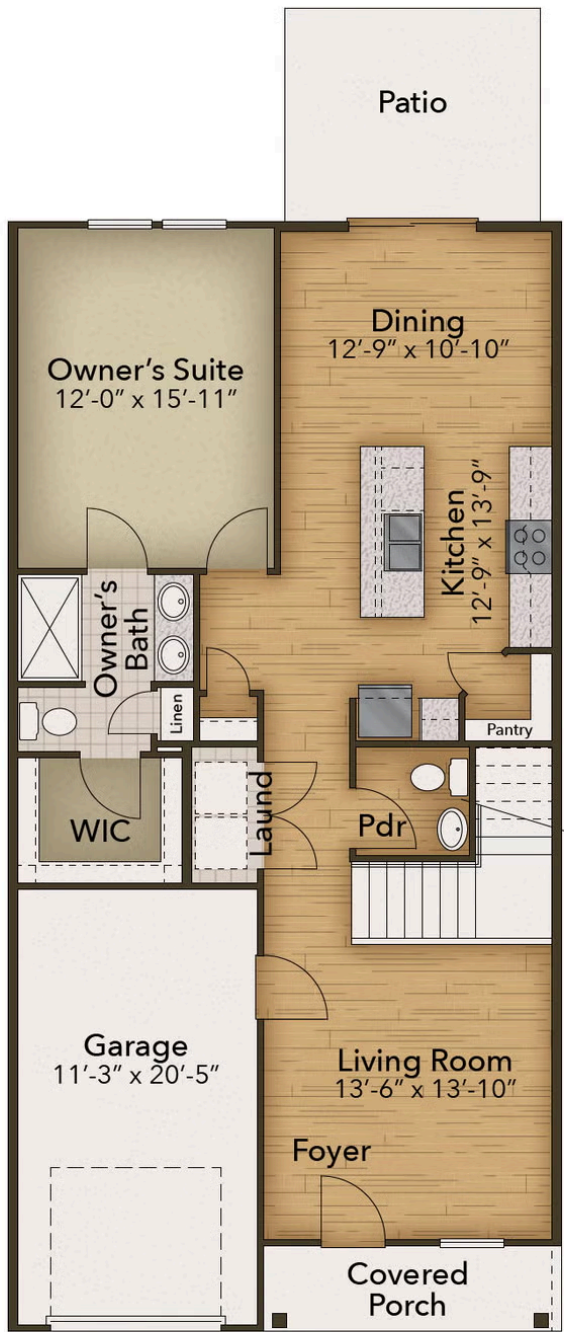
The Dahlia is a spacious townhome with 1,687 square feet, featuring 3 bedrooms and 2.5 bathrooms. Enter through the foyer to the living room, which connects to the open-concept kitchen and dining area. Relax outside on the rear patio. The owner's suite is conveniently located on the first floor, and boasts a spacious bathroom and walk-in closet. Practicality is enhanced by the first floor laundry room and attached garage access. The second floor has space and flexibility, featuring a large loft, two bedrooms, and a full bathroom. Whether you need a cozy reading nook or a home office, the upstairs loft is ready to adapt. Experience the smart layout of The Dahlia, and call us today!

\$319,900

 **3 Bedrooms**

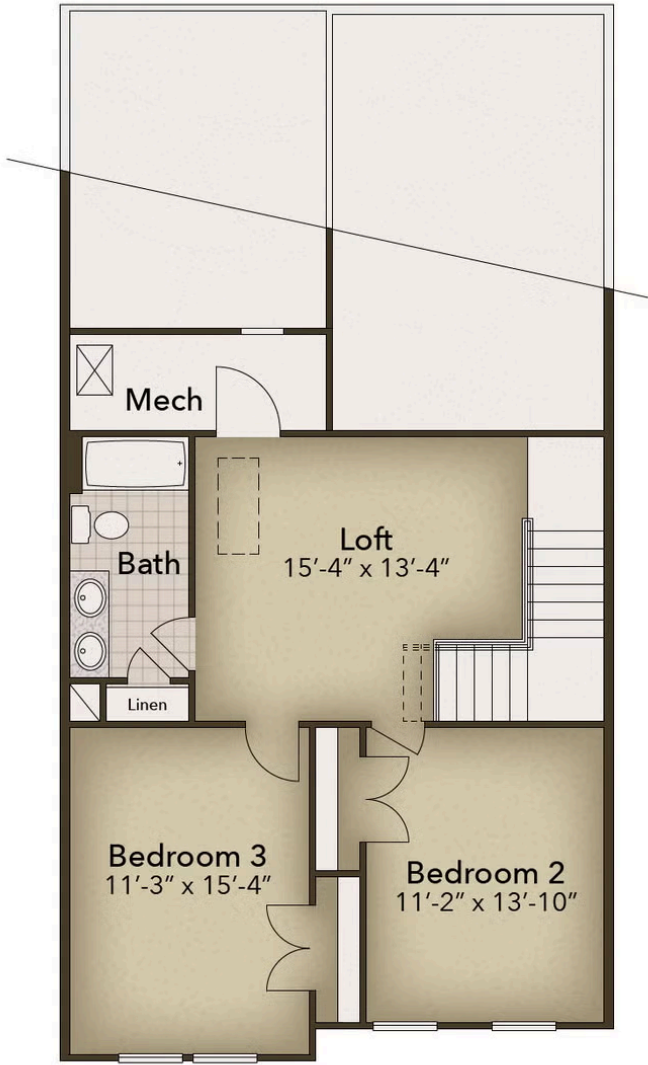
 **2.5 Bathrooms**

FIRST FLOOR



CONTACT US 757-550-2617
WWW.CHESHOMES.COM

SECOND FLOOR



CONTACT US 757-550-2617
WWW.CESHOMES.COM