



Riverwalk Pointe at Mallory Creek Community

The Lotus Floor Plan

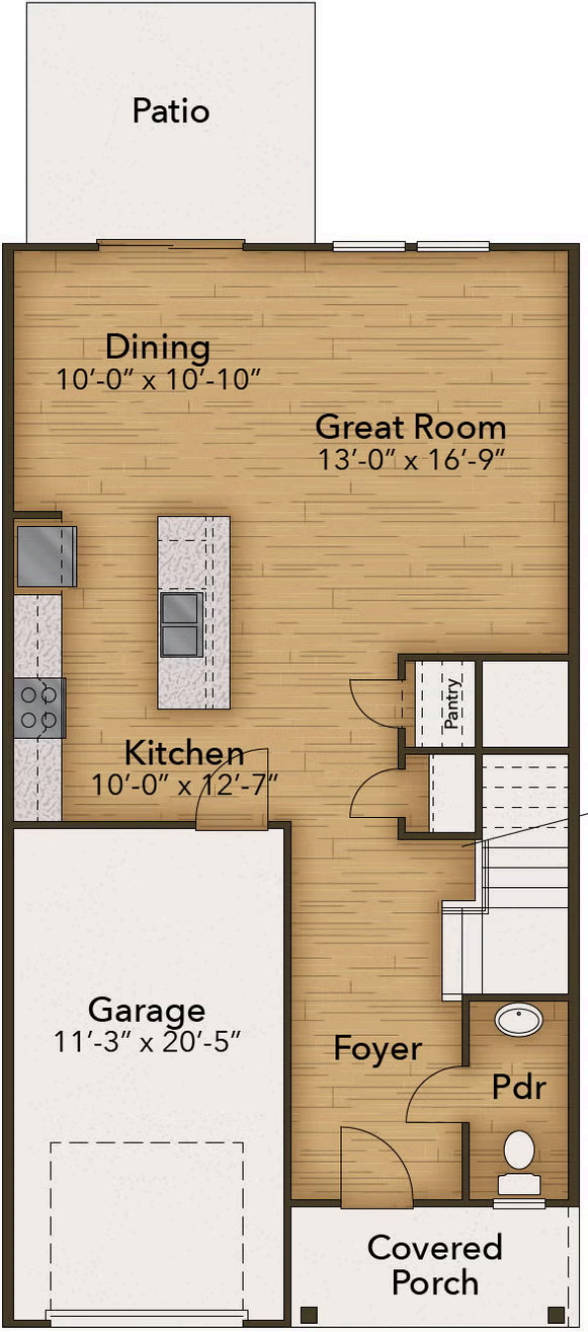
Need a charming, low-maintenance home that makes every square foot count? The answer is The Lotus! This stunning townhome offers 1,677 square feet of smart, contemporary living with 3 bedrooms and 2.5 bathrooms. Step inside to an inviting open-concept first floor that connects daily activities through the centrally located Great Room, flowing directly into the Dining Area and Kitchen. Enjoy your morning coffee on the attached patio, accessible directly from the dining room. Retreat upstairs to the owner's suite featuring an attached owner's bath and a spacious walk-in closet with all the space you deserve. For a touch of elegance, consider adding the optional tray ceiling. Two additional bedrooms are designed with family comfort in mind, each featuring its own walk-in closet for fantastic storage. The Lotus is created with comfort in mind. Don't wait to make this townhome yours today!

\$309,900

 **3 Bedrooms**

 **2.5 Bathrooms**

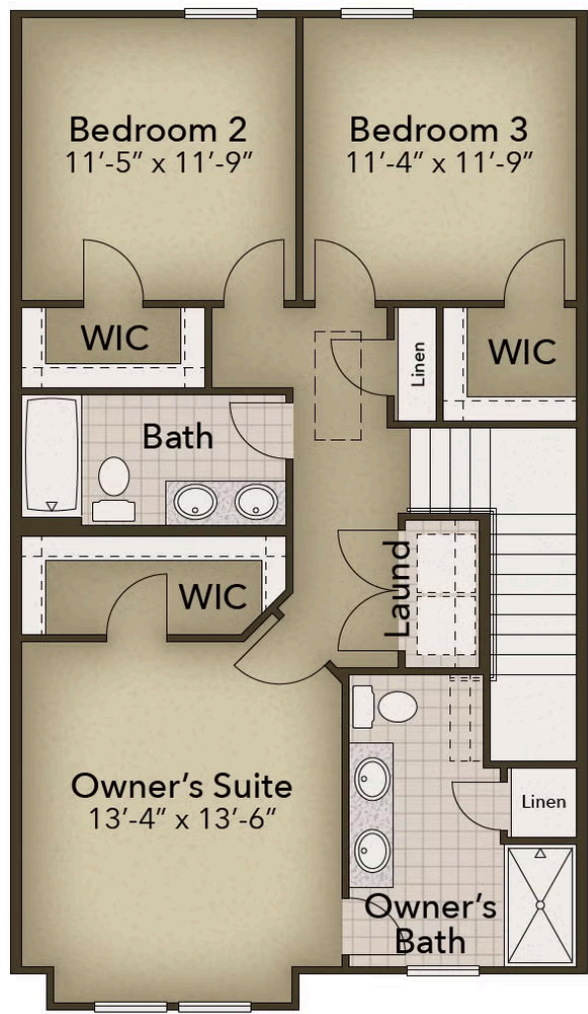
FIRST FLOOR



CONTACT US 757-550-2617

WWW.CHESHOMES.COM

SECOND FLOOR



CONTACT US 757-550-2617
WWW.CESHOMES.COM