



## Riverwalk Pointe at Mallory Creek Community

### The Waterlily Floor Plan

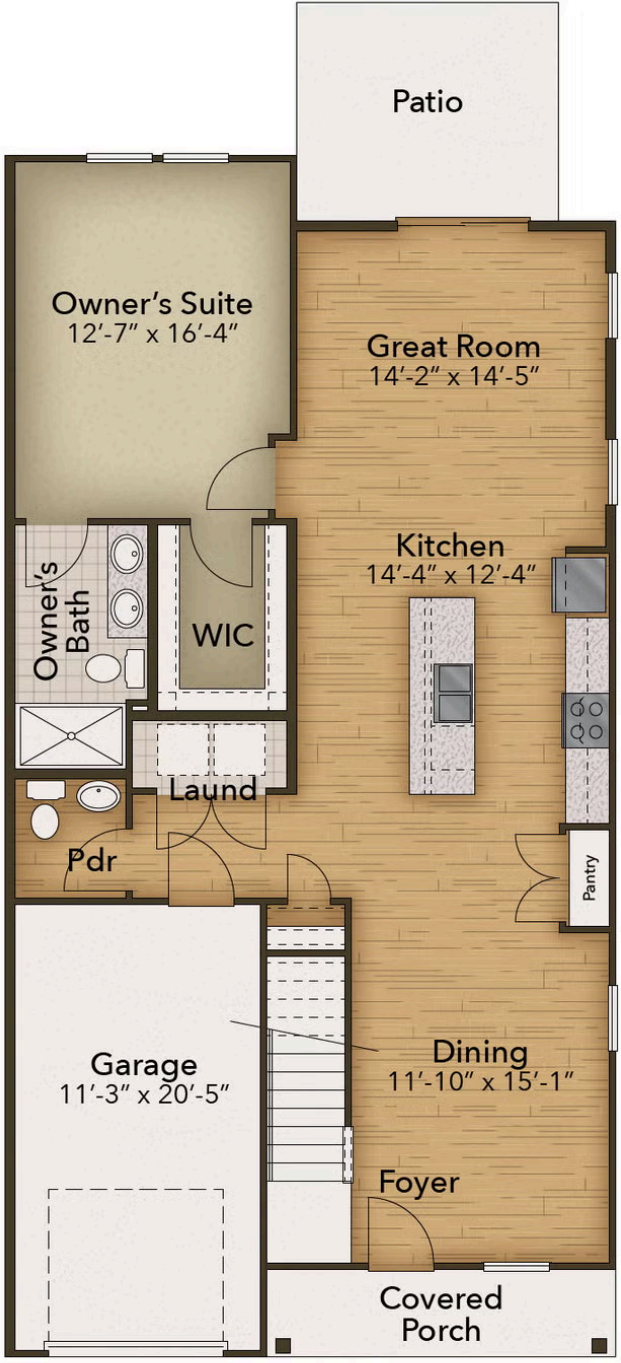
Step into the Waterlily, a stunning residence delivering 1,992 square feet of space, featuring 3 bedrooms and 2.5 bathrooms. The first floor is perfect for entertaining, where the kitchen, dining area, and great room flow together. Prepare to live large with direct access to the outdoor patio for enjoying serene mornings or evening gatherings. The owner's suite is thoughtfully placed on the main level, with a spacious walk-in closet and bathroom. Add the optional tray ceiling for an elevated look. Upstairs, a massive loft provides an incredible canvas for a reading nook or home office. Two additional bedrooms and a shared full bath ensure privacy and comfort. The Waterlily is more than a home; secure this model today!

**\$341,900**

 **3 Bedrooms**

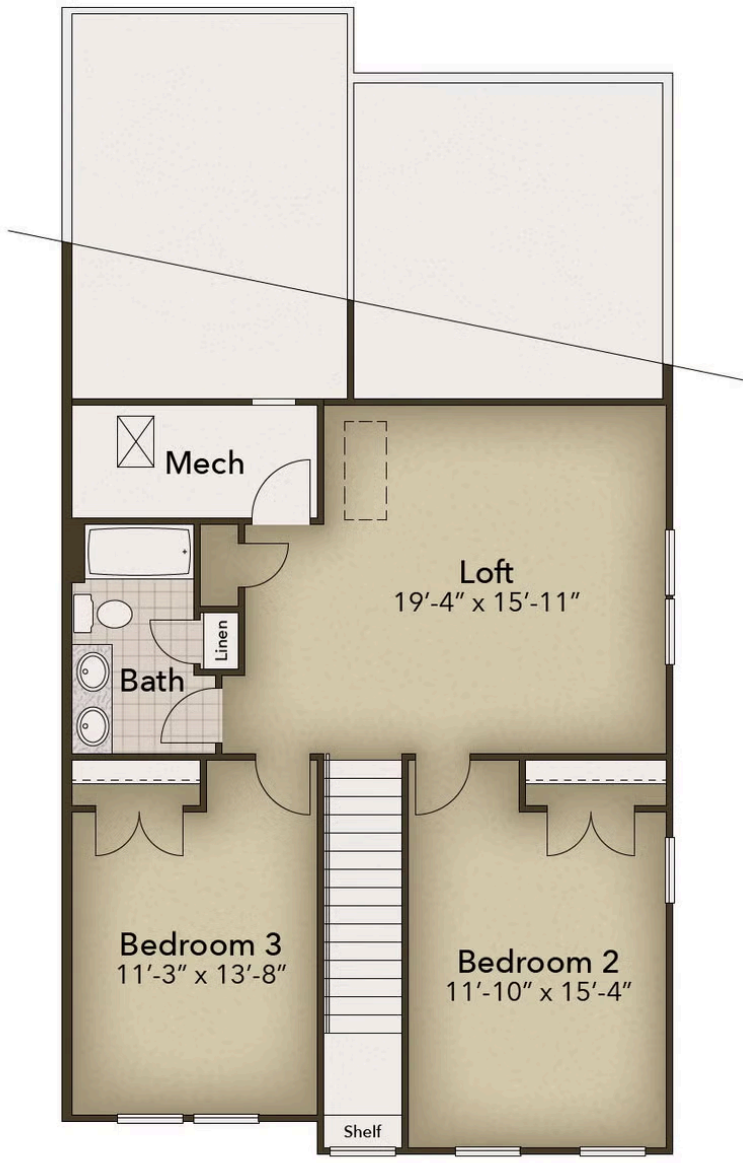
 **2.5 Bathrooms**

**FIRST FLOOR**



**CONTACT US 757-550-2617**  
**WWW.CESHOMES.COM**

## SECOND FLOOR



CONTACT US 757-550-2617

WWW.CESHOMES.COM