



The Dahlia

RIVERWALK POINTE AT MALLORY CREEK

The Dahlia is a spacious townhome with 1,687 square feet, featuring 3 bedrooms and 2.5 bathrooms. Enter through the foyer to the living room, which connects to the open-concept kitchen and dining area. Relax outside on the rear patio. The owner's suite is conveniently located on the first floor, and boasts a spacious bathroom and walk-in closet. Practicality is enhanced by the first floor laundry room and attached garage access. The second floor has space and flexibility, featuring a large loft, two bedrooms, and a full bathroom. Whether you need a cozy reading nook or a home office, the upstairs loft is ready to adapt. Experience the smart layout of The Dahlia, and call us today!

 3 Bedrooms

 2.5 Bathrooms

 1,801 Sq.Ft.

 2 Stories

 1 Car Garage

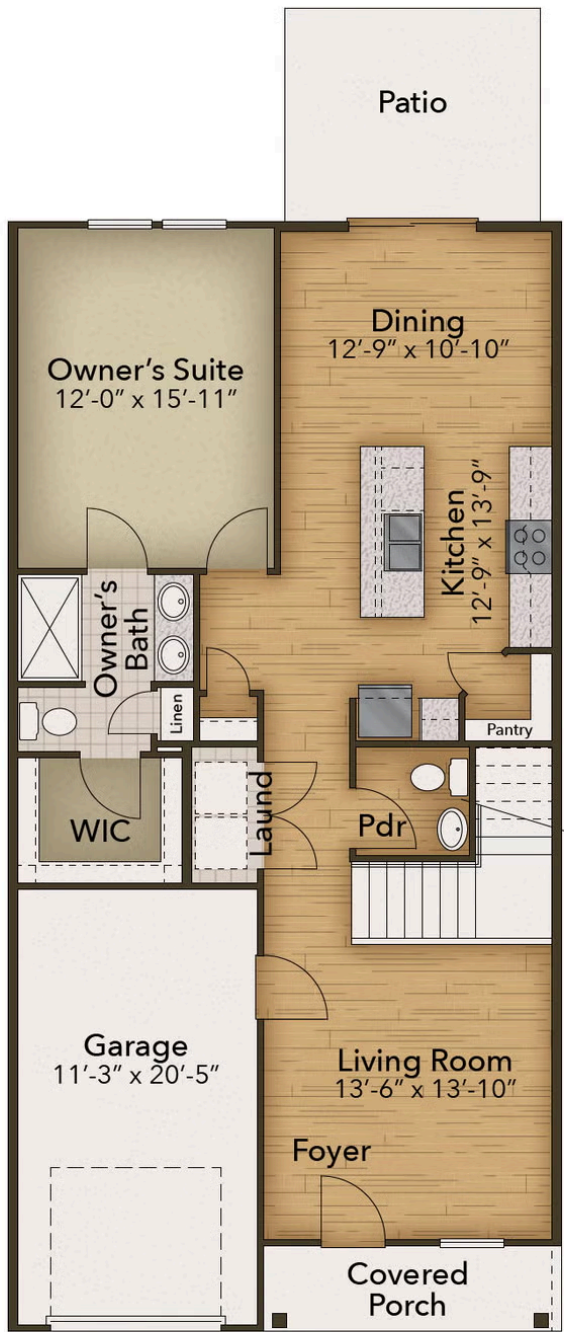
CONTACT US 757-550-2617

WWW.CHESHOMES.COM



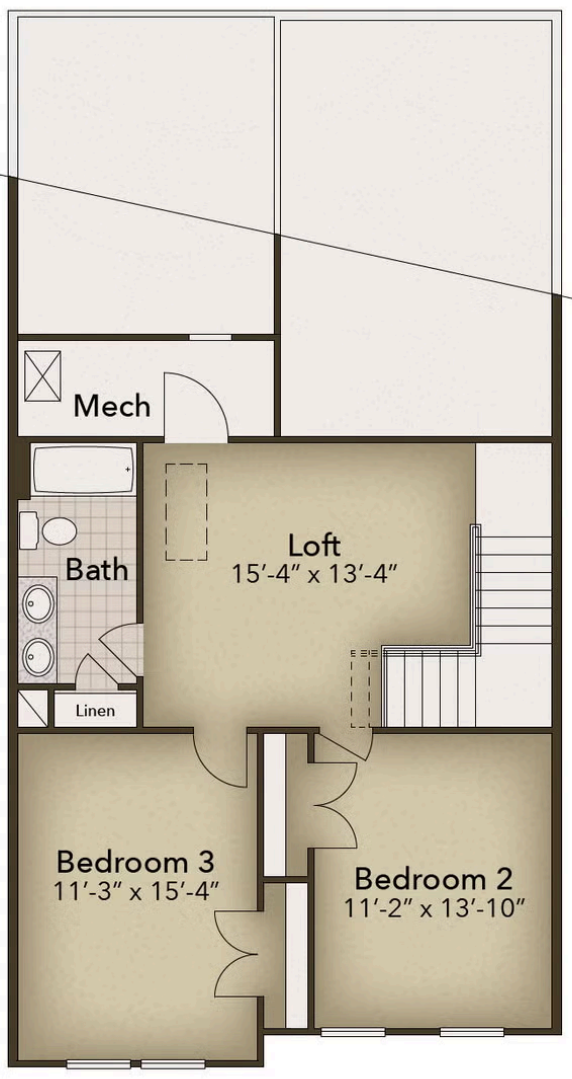
Chesapeake Homes continuously improves home designs and reserves the right to modify home features and specifications without notice or obligation. Square footage and measurements are approximate. Renderings of elevations are artist's concepts. Floor plans vary per elevation. Chesapeake Homes standard features vary by home design and location, please refer to the included features sheet for the community to define specifications. This brochure is for illustrative purposes and not part of the legal contract. Please ask Sales Associate for complete details. © 2026 Chesapeake Homes. Current information as 24th June 2026

FIRST FLOOR



CONTACT US 757-550-2617
WWW.CESHOMES.COM

SECOND FLOOR



CONTACT US 757-550-2617

WWW.CHESHOMES.COM