

Need a charming, low-maintenance home that makes every square foot count? The answer is The Lotus! This stunning townhome offers 1,726 square feet of smart, contemporary living with 3 bedrooms and 2.5 bathrooms. Step inside to an inviting open-concept first floor that connects daily activities through the centrally located Great Room, flowing directly into the Dining Area and Kitchen. Enjoy your morning coffee on the attached patio, accessible directly from the dining room. Retreat upstairs to the owner's suite featuring an attached owner's bath and a spacious walk-in closet with all the space you deserve. For a touch of elegance, consider adding the optional tray ceiling. Two additional bedrooms are designed with family comfort in mind, each featuring its own walk-in closet for fantastic storage. The Lotus is created with comfort in mind. Don't wait to make this townhome yours today!

 3 Bedrooms

 2.5 Bathrooms

 1,677 Sq.Ft.

 2 Stories

 1 Car Garage

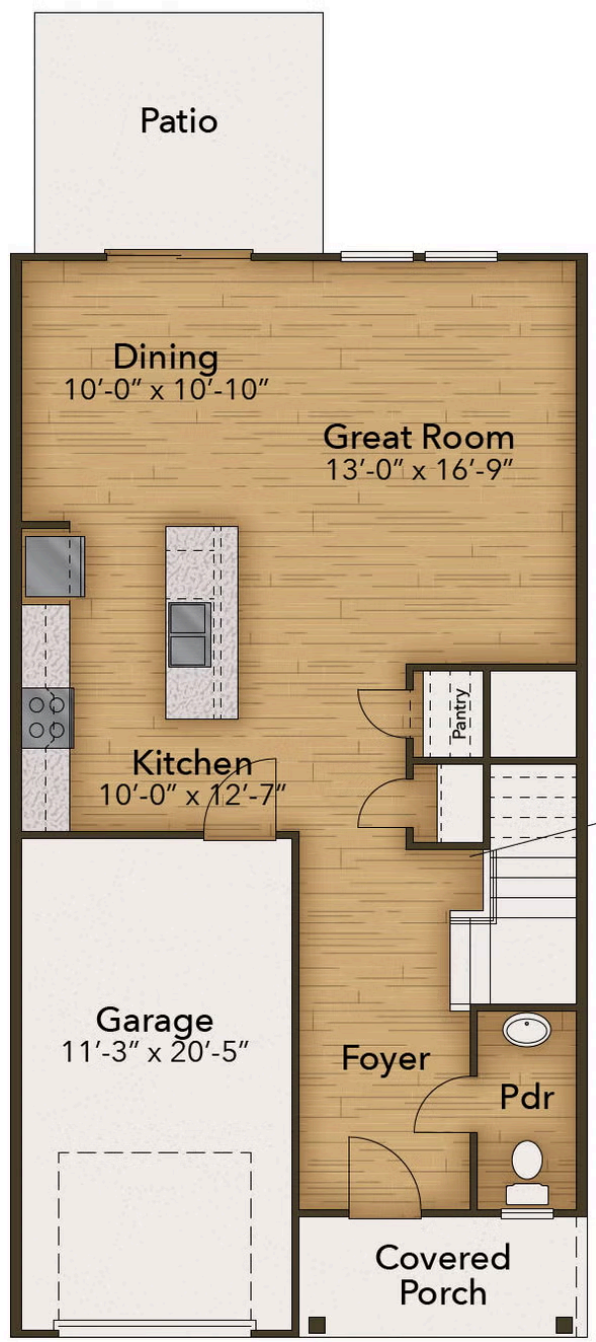
CONTACT US 757-550-2617

WWW.CESHOMES.COM



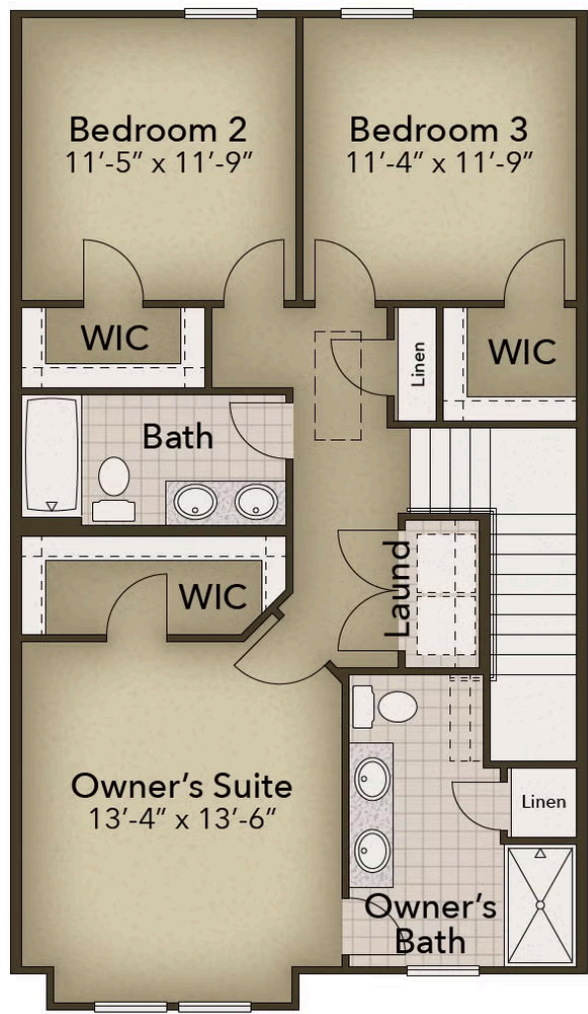
Chesapeake Homes continuously improves home designs and reserves the right to modify home features and specifications without notice or obligation. Square footage and measurements are approximate. Renderings of elevations are artist's concepts. Floor plans vary per elevation. Chesapeake Homes standard features vary by home design and location, please refer to the included features sheet for the community to define specifications. This brochure is for illustrative purposes and not part of the legal contract. Please ask Sales Associate for complete details. © 2026 Chesapeake Homes. Current information as 24th June 2026

FIRST FLOOR



CONTACT US 757-550-2617
WWW.CHESHOMES.COM

SECOND FLOOR



CONTACT US 757-550-2617
WWW.CESHOMES.COM