

Step into the Waterlily, a stunning residence delivering 1,992 square feet of space, featuring 3 bedrooms and 2.5 bathrooms. The first floor is perfect for entertaining, where the kitchen, dining area, and great room flow together. Prepare to live large with direct access to the outdoor patio for enjoying serene mornings or evening gatherings. The owner's suite is thoughtfully placed on the main level, with a spacious walk-in closet and bathroom. Add the optional tray ceiling for an elevated look. Upstairs, a massive loft provides an incredible canvas for a reading nook or home office. Two additional bedrooms and a shared full bath ensure privacy and comfort. The Waterlily is more than a home; secure this model today!

 **3 Bedrooms**

 **2.5 Bathrooms**

 **2,079 Sq. Ft.**

 **2 Stories**

 **1 Car Garage**

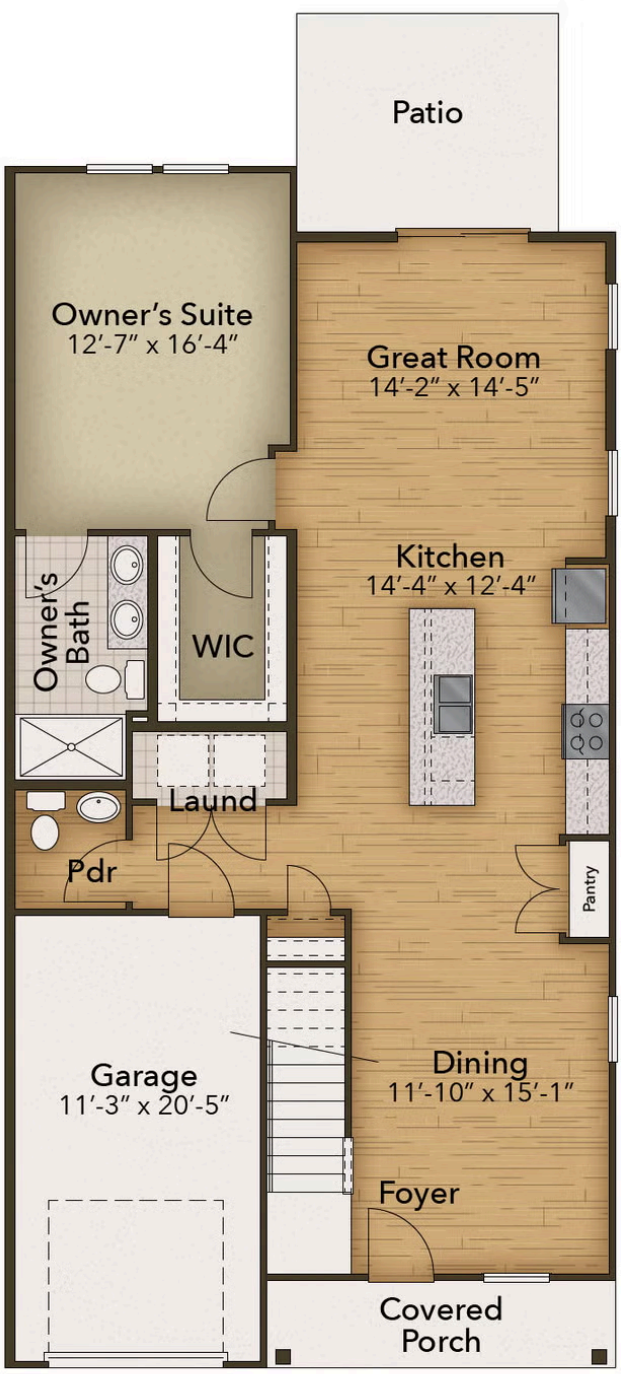
CONTACT US 757-550-2617

WWW.CESHOMES.COM



Chesapeake Homes continuously improves home designs and reserves the right to modify home features and specifications without notice or obligation. Square footage and measurements are approximate. Renderings of elevations are artist's concepts. Floor plans vary per elevation. Chesapeake Homes standard features vary by home design and location, please refer to the included features sheet for the community to define specifications. This brochure is for illustrative purposes and not part of the legal contract. Please ask Sales Associate for complete details. © 2026 Chesapeake Homes. Current information as 24th June 2026

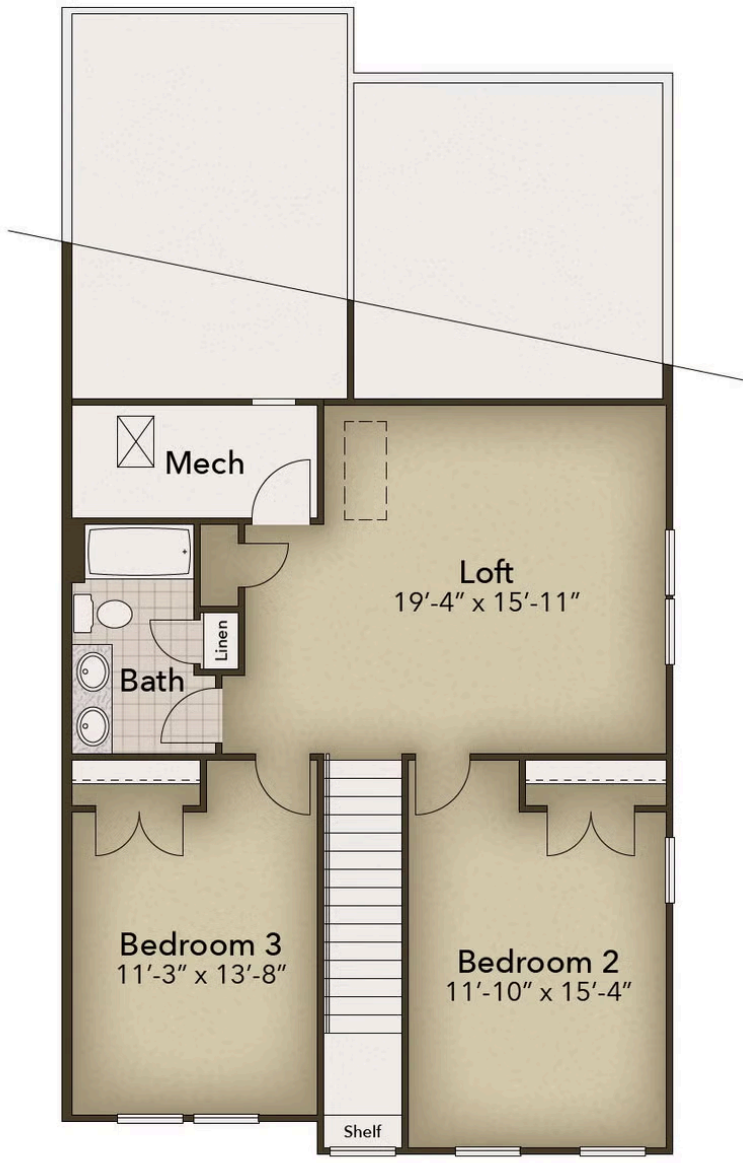
FIRST FLOOR



CONTACT US 757-550-2617

WWW.CESHOMES.COM

SECOND FLOOR



CONTACT US 757-550-2617

WWW.CHESHOMES.COM