



Terrapin Community

The Hibiscus Floor Plan

With up to 1,732 square feet of living space, the Hibiscus is one of the largest of the Villas. Upon entering the home, you'll be greeted by the double-height foyer, which leads you to the wide-open downstairs living space. The open concept layout and large, 7' kitchen island lends itself to always being the home's gathering place. When you're ready to get outside, enjoy the ocean air while relaxing on your rear-covered porch. Upstairs, you will find two bedrooms, a full bathroom, and an open loft. The Hibiscus is perfect for your family or a revolving door of visitors who can't wait to enjoy coastal living with you. *PHOTOS OF SIMILAR HOME*

\$399,900

 **3 Bedrooms**

 **2.5 Bathrooms**



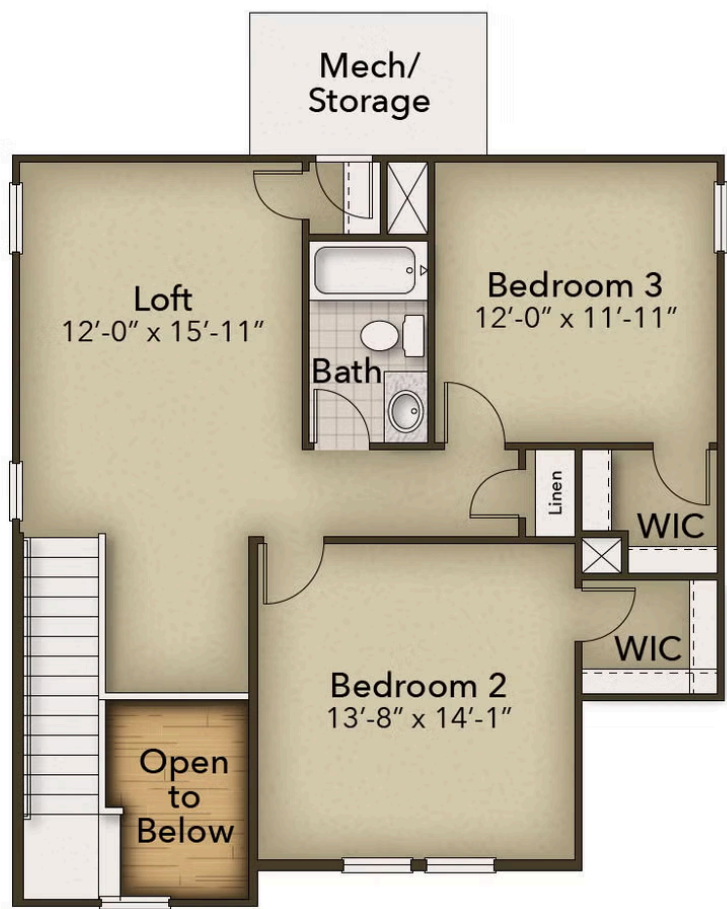
FIRST FLOOR



CONTACT US 757-550-2617

WWW.CESHOMES.COM

SECOND FLOOR



CONTACT US 757-550-2617

WWW.CESHOMES.COM