



Terrapin Community

The Orchid Floor Plan

The Orchid plan offers the comforts of your home in a cozy package, complete with all the thoughtful details you would expect in a home from Chesapeake Homes. This home offers 1,483 square feet of living space complete with a secondary bedroom and flex space. Living is easy in The Orchid's open concept single floor living space. The rear covered porch can become an extension of your great room, with the sliding glass doors that will lead you outside to enjoy the seasonal weather year-round. The great room, open kitchen and dining area flow seamlessly from one room to the next. And with the option to upgrade your kitchen space with a large center island. And finally, delight in the architectural details that will set your home apart with beautifully proportioned windows and trim work that quietly impress. The Orchid could be exactly what you are looking for in your next home. *PHOTOS OF SIMILAR HOME*

\$353,900



3 Bedrooms



2.0 Bathrooms



1,483 Sq.Ft.



1 Stories

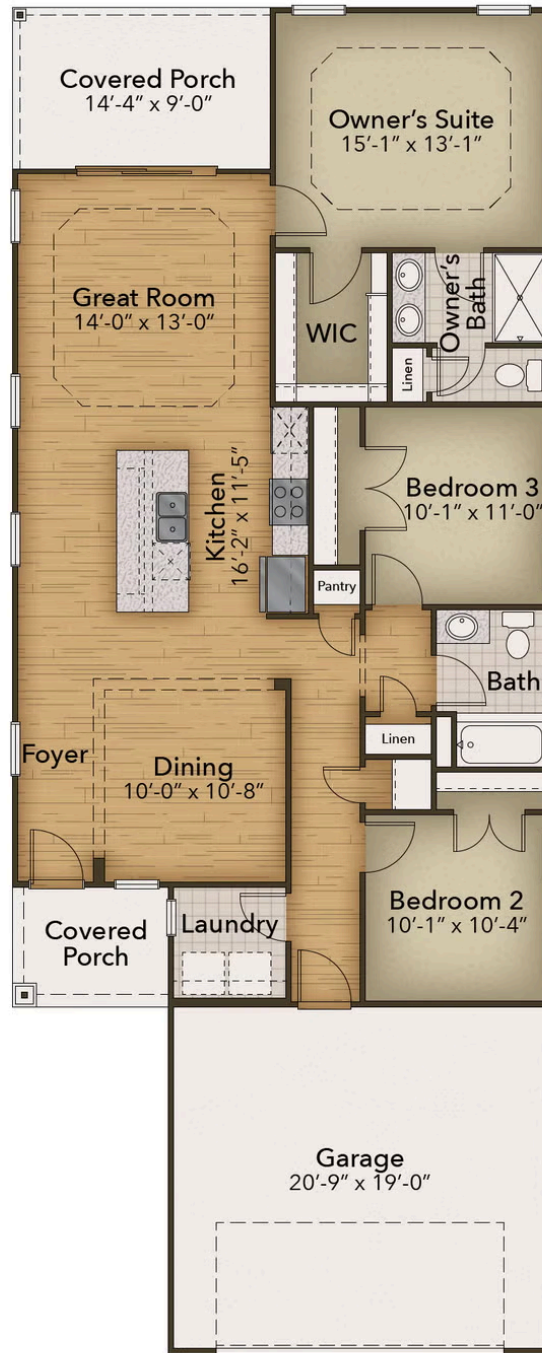


2 Car Garage

CONTACT US 757-550-2617

WWW.CESHOMES.COM





CONTACT US 757-550-2617

WWW.CESHOMES.COM

