



Terrapin Community

The Longboard Floor Plan

Experience divine living in the Longboard model at Terrapin. This stunning home boasts over 2,000 square feet of luxurious living space, featuring three spacious bedrooms and two modern bathrooms. Enter through the elegant covered front porch, covered rear porch, or two-car garage and step into the Longboard's breathtaking open floor plan. Entertain guests effortlessly in the expansive and connected kitchen, dining, and great room area. Escape from the ordinary and indulge in the Longboard's exquisite design and perfect balance of comfort and sophistication. Ready to explore your dream home possibilities? Just beyond the great room, discover a world of tranquility with 2 large bedrooms, a full bathroom, and a laundry room fit for anyone's routines. But wait, there's more! The stunning owner's suite is ready to elevate your every day with an extra large bedroom, a walk-in closet, and a deluxe owner's bathroom featuring your choice of seated shower. *PHOTOS OF SIMILAR HOME*

\$535,900



3 Bedrooms



2.0 Bathrooms



2,030 Sq.Ft.



1 Stories



2 Car Garage

CONTACT US 757-550-2617

WWW.CESHOMES.COM



FIRST FLOOR

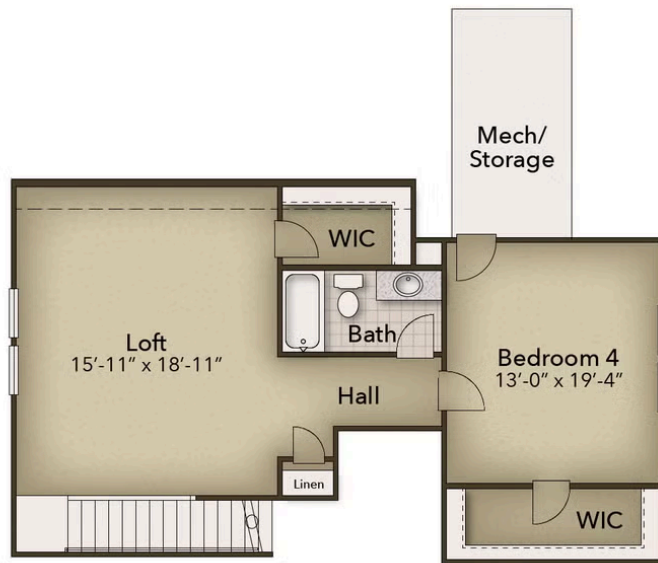


CONTACT US 757-550-2617

WWW.CESHOMES.COM



SECOND FLOOR



CONTACT US 757-550-2617

WWW.CESHOMES.COM

