



## Terrapin Community

### The Longboard Floor Plan

Experience divine living in the Longboard model at Terrapin. This stunning home boasts over 2,000 square feet of luxurious living space, featuring four spacious bedrooms and three modern bathrooms. Enter through the elegant covered front porch, covered rear porch, or two-car garage and step into the Longboard's breathtaking open floor plan. Entertain guests effortlessly in the expansive and connected kitchen, dining, and great room area. Escape from the ordinary and indulge in the Longboard's exquisite design and perfect balance of comfort and sophistication. The stunning owner's suite is ready to elevate your every day with an extra large bedroom, a walk-in closet, and a deluxe owner's bathroom. \*PHOTOS OF SIMILAR HOME\*

**\$535,900**



4 Bedrooms



3.0 Bathrooms



2,788 Sq.Ft.



2 Stories



2 Car Garage

CONTACT US 757-550-2617

WWW.CESHOMES.COM



**FIRST FLOOR**

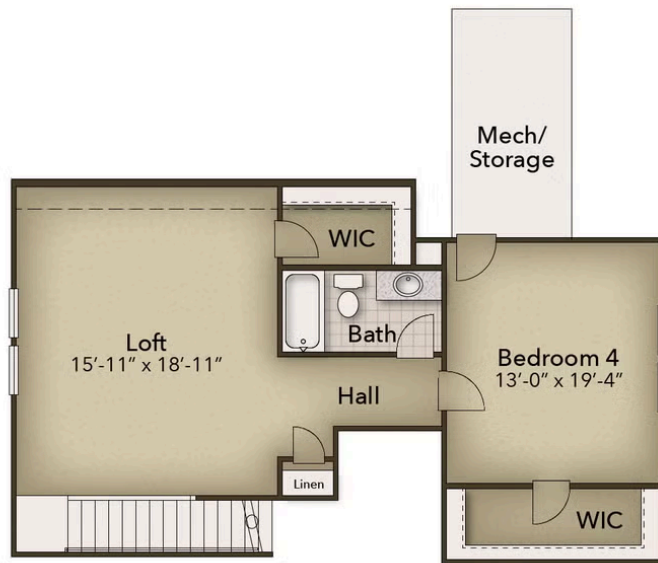


CONTACT US 757-550-2617

WWW.CESHOMES.COM



## SECOND FLOOR



CONTACT US 757-550-2617

WWW.CESHOMES.COM

