

Step into luxury living with the Sycamore plan! This concept home is designed to maximize space efficiency while providing a spacious and comfortable retreat. With three bedrooms and two and a half bathrooms in 1,795 square feet of living space, there's room for everyone to relax and recharge. The open-concept living area is perfect for entertaining and hosting family gatherings. The great room, kitchen, and dining area blend seamlessly, creating a warm and inviting atmosphere that's perfect for any occasion. Upgrade your gourmet kitchen with double wall ovens and a center island for a custom feel that's sure to impress. And the Sycamore plan isn't just about functionality - it's also highly customizable. Add a fourth bedroom by converting the loft, or create an outdoor oasis with a rear covered porch. Looking to cozy up on a chilly evening? Add a fireplace to your great room for the ultimate comfort and style. With so many options for personalization, the Sycamore plan is truly your dream home waiting to be built.


**3 Bedrooms**

**2.5 Bathrooms**

**1,795 Sq.Ft.**

**2 Stories**

**2 Car Garage**
**CONTACT US 757-550-2617**
**WWW.CESHOMES.COM**


Chesapeake Homes continuously improves home designs and reserves the right to modify home features and specifications without notice or obligation. Square footage and measurements are approximate. Renderings of elevations are artist's concepts. Floor plans vary per elevation. Chesapeake Homes standard features vary by home design and location, please refer to the included features sheet for the community to define specifications. This brochure is for illustrative purposes and not part of the legal contract. Please ask Sales Associate for complete details. © 2026 Chesapeake Homes. Current information as 17th February 2026

## FIRST FLOOR



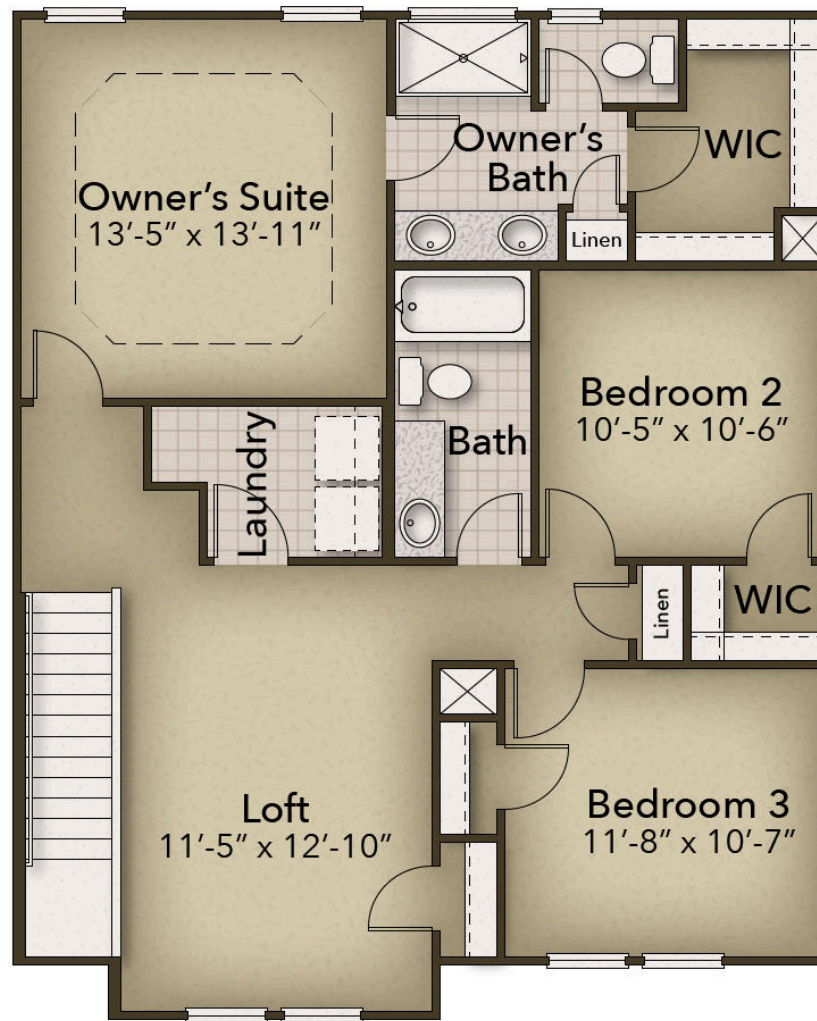
CONTACT US 757-550-2617

WWW.CESHOMES.COM



Chesapeake Homes continuously improves home designs and reserves the right to modify home features and specifications without notice or obligation. Square footage and measurements are approximate. Renderings of elevations are artist's concepts. Floor plans vary per elevation. Chesapeake Homes standard features vary by home design and location, please refer to the included features sheet for the community to define specifications. This brochure is for illustrative purposes and not part of the legal contract. Please ask Sales Associate for complete details. © 2026 Chesapeake Homes. Current information as 17th February 2026

## SECOND FLOOR



CONTACT US 757-550-2617

WWW.CESHOMES.COM



Chesapeake Homes continuously improves home designs and reserves the right to modify home features and specifications without notice or obligation. Square footage and measurements are approximate. Renderings of elevations are artist's concepts. Floor plans vary per elevation. Chesapeake Homes standard features vary by home design and location, please refer to the included features sheet for the community to define specifications. This brochure is for illustrative purposes and not part of the legal contract. Please ask Sales Associate for complete details. © 2026 Chesapeake Homes. Current information as 17th February 2026