



## The Farm at Neill's Creek Community

### The Concerto Floor Plan

These 2,667 square feet of space are for any family on the go during the week and for those who love to lounge on the weekends. The Concerto plan offers a spacious lifestyle with the four bedrooms. The open-concept kitchen and great room create an extensive floor plan broken up with a kitchen island and breakfast nook. Plus, with patio access connected, who says you can't enjoy your morning coffee outside? Once you head upstairs, you will find a vast loft area. It's the perfect spot for that media room, playroom, or workout spot you have been looking for. After a long day, you will feel like you are living a life of luxury once you step into the Owner's Suite. With an upscaled L-shape walk-in closet and deluxe bathroom with a double bowl sink vanity, your daily routines will no longer become a hassle. On top of all of that, two generously sized bedrooms and a full bath are located on this floor. The Concerto is for anyone who wants to live in a home that makes you say "Ahhhhhhhh" on...



4 Bedrooms



3.0 Bathrooms



2,667 Sq.Ft.



2 Stories



2 Car Garage

CONTACT US 757-550-2617

WWW.CHESHOMES.COM



## FIRST FLOOR



CONTACT US 757-550-2617

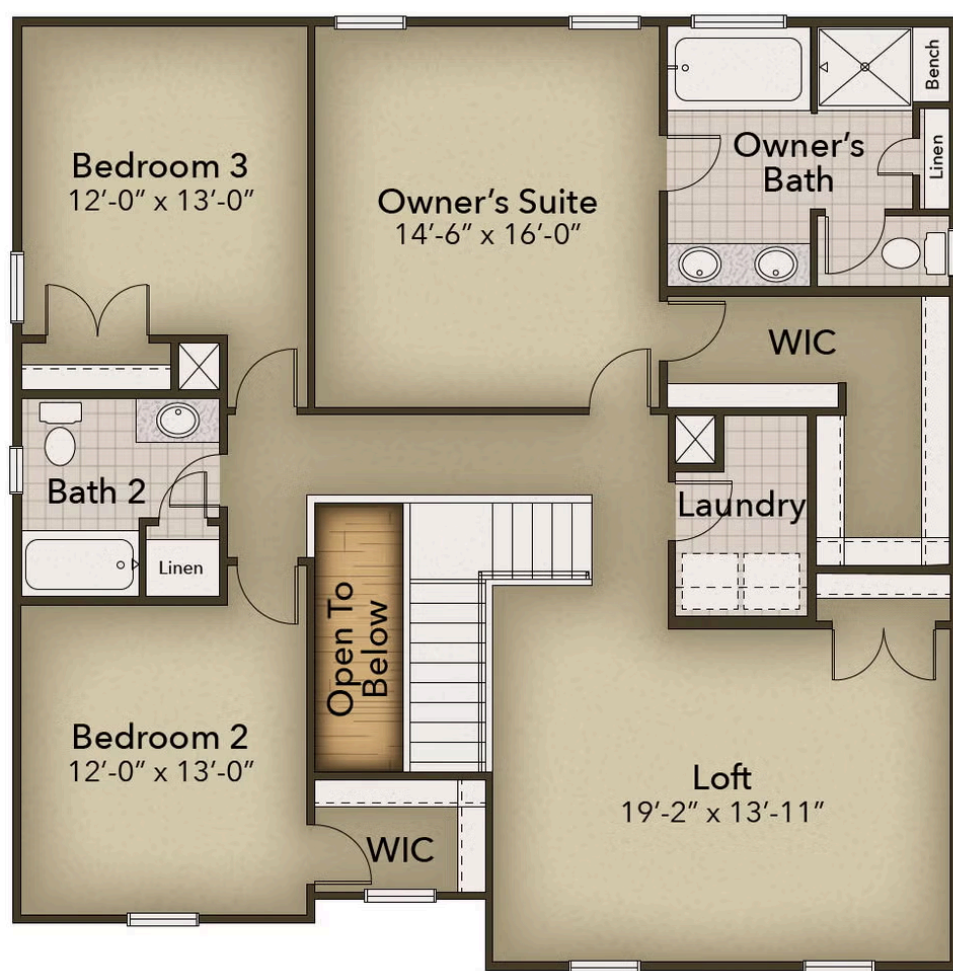
WWW.CESHOMES.COM



Chesapeake Homes continuously improves home designs and reserves the right to modify home features and specifications without notice or obligation. Square footage and measurements are approximate. Renderings of elevations are artist's concepts. Floor plans vary per elevation. Chesapeake Homes standard features vary by home design and location, please refer to the included features sheet for the community to define specifications. This brochure is for illustrative purposes and not part of the legal contract. Please ask Sales Associate for complete details. © 2025 Chesapeake Homes. Current information as 14th October 2025



## SECOND FLOOR



CONTACT US 757-550-2617

WWW.CESHOMES.COM

