



The Farm at Neill's Creek Community The Concerto Floor Plan

These 2,667 square feet of space are for any family on the go during the week and for those who love to lounge on the weekends. The Concerto plan offers a spacious lifestyle with the four bedrooms. The open-concept kitchen and great room create an extensive floor plan broken up with a kitchen island and breakfast nook. Plus, with patio access connected, who says you can't enjoy your morning coffee outside? Once you head upstairs, you will find a vast loft area. It's the perfect spot for that media room, playroom, or workout spot you have been looking for. After a long day, you will feel like you are living a life of luxury once you step into the Owner's Suite. With an upscaled L-shape walk-in closet and deluxe bathroom with a double bowl sink vanity, your daily routines will no longer become a hassle. On top of all of that, two generously sized bedrooms and a full bath are located on this floor. The Concerto is for anyone who wants to live in a home that makes you say "Ahhhhhhhh" on...

\$414,900

 **4 Bedrooms**

 **3.0 Bathrooms**



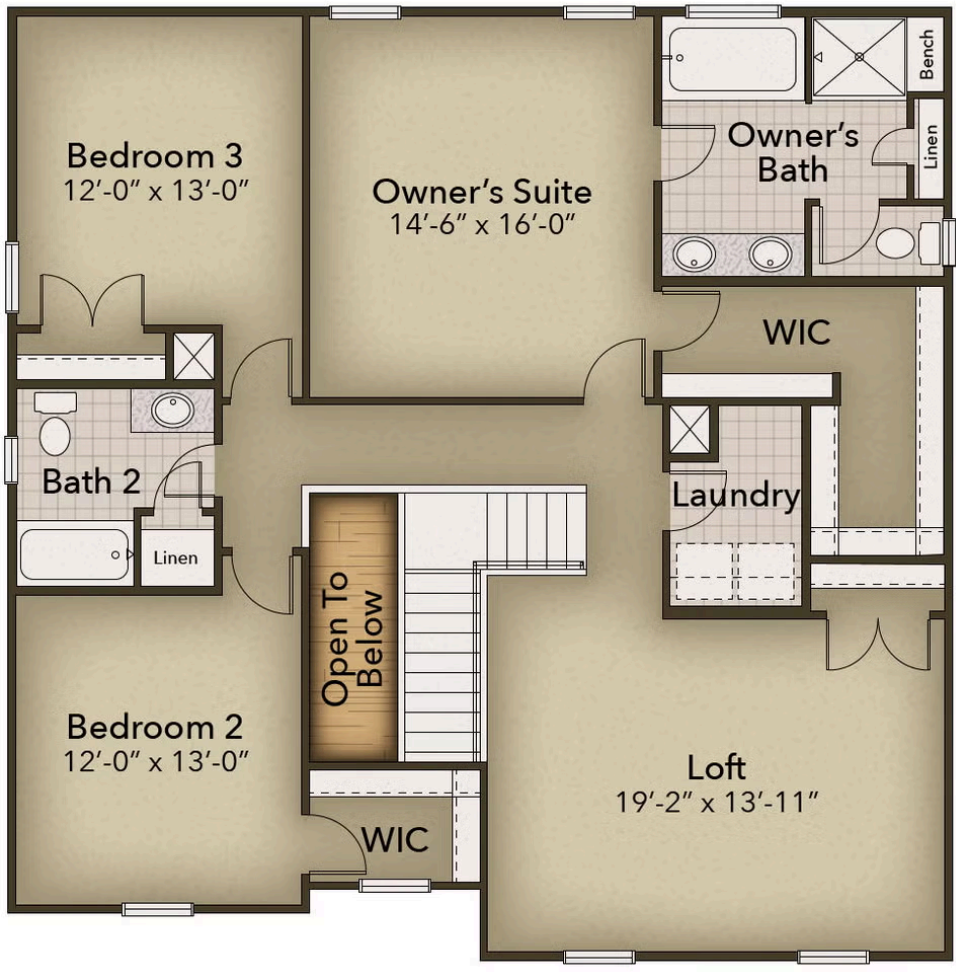
FIRST FLOOR



CONTACT US 757-550-2617

WWW.CESHOMES.COM

SECOND FLOOR



CONTACT US 757-550-2617

WWW.CESHOMES.COM