



The Farm at Neill's Creek Community

The Hawthorne Floor Plan

The Hawthorne is a beautifully designed home that offers comfort, flexibility, and plenty of room to grow. With 2,176 square feet of thoughtfully planned space, this floor plan includes three bedrooms and 2 full bathrooms. On the first floor, you'll find a spacious open-concept living area where the great room, dinette, and kitchen flow seamlessly together, ideal for both everyday living and entertaining. Also downstairs, there's a formal dining room, a powder room, and access to the two-car garage. Want to enjoy meals outside? This comes with a beautiful rear covered porch, perfect for an outdoor dining experience. Upstairs, all bedrooms are located together, including the impressive owner's suite, a large bathroom, and two walk-in closets. The laundry room is located just outside the suite for easy access, alongside two additional bedrooms, a full bath, and a loft. The open loft can be reimagined as a playroom, office, or second living space to suit your needs. The Hawthorne is a...

\$381,900



3 Bedrooms



2.5 Bathrooms



2,176 Sq.Ft.



2 Stories



2 Car Garage

CONTACT US 757-550-2617

WWW.CESHOMES.COM



FIRST FLOOR

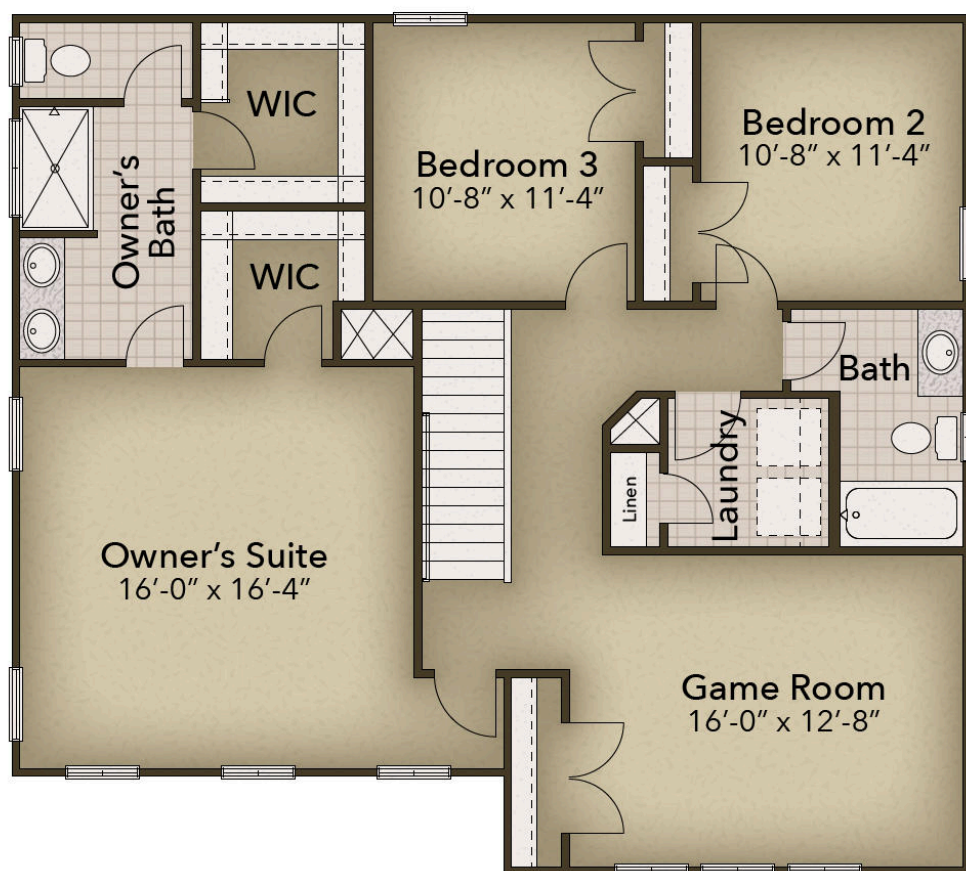


CONTACT US 757-550-2617

WWW.CESHOMES.COM



SECOND FLOOR



CONTACT US 757-550-2617

WWW.CESHOMES.COM

