



The Farm at Neill's Creek Community

The Redbud Floor Plan

The Redbud: A Perfect Retreat for Entertaining and Relaxation Discover the Redbud, a home designed for those who love to entertain and seek peaceful retreats. The spacious kitchen, complete with a pantry and center island, provides ample room for creating delicious culinary masterpieces - even if you're ordering takeout! After dinner, retreat to your personal oasis: the Owner's Suite. With a tray ceiling bedroom and a private bath featuring double sinks and a walk-in shower with a closet combination, it's the ideal hideaway from the everyday. When the weather is beautiful, enjoy the porch that seamlessly flows from the Great Room area. Indulge in the ultimate blend of functionality and luxury with the Redbud home.*Please reach out to learn more about this home and secure your VIP tour time at 919-352-9435! Photos shown of a similar home*

\$402,900



4 Bedrooms



2.0 Bathrooms



1,846 Sq.Ft.

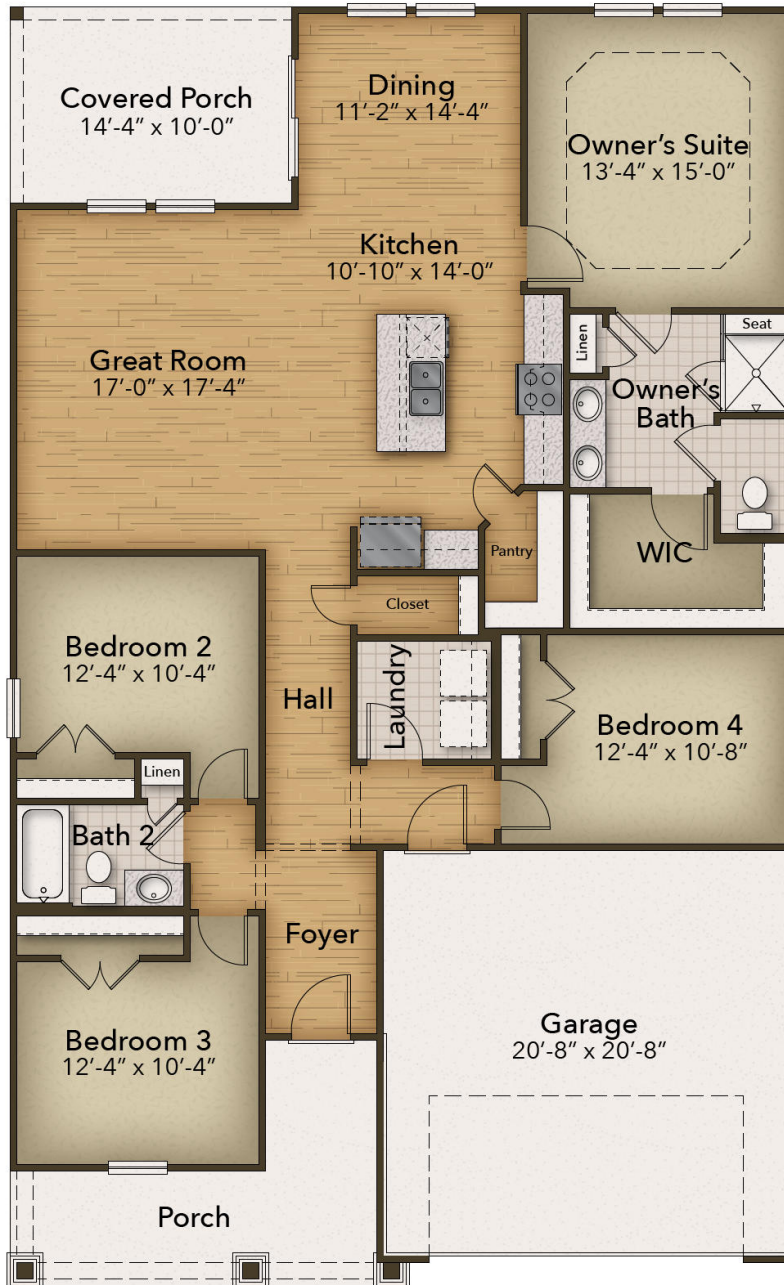


1 Stories



2 Car Garage

FIRST FLOOR



CONTACT US 757-550-2617

WWW.CESHOMES.COM

