



The Farm at Neill's Creek Community

The Holly Floor Plan

The Holly layout is a great example of how Chesapeake Homes creates spaces that are both functional and beautiful. This 2,343 square foot home provides homeowners with an included three-car garage, an open-concept great room, a kitchen, and a dining room that leads to an outdoor patio. Love having people over for dinner? This home features a gourmet island. On the ground floor, you will also find a bedroom and full bath. On the second floor, you will find two spacious bedrooms both with walk-in closets and a full bathroom. The rest of the floor is the open loft that leads to the Owner's suite and laundry room. The owner's suite has tray ceilings, a deluxe bathroom, and a walk-in closet. It will be the perfect spot to lay your head down after a long day. This stylish all-in-one build is perfect for the homeowner who wants to be able to have a new home construction with a great framework to make your very own. **Please call our Online Sales Consultants at 757-550-2617 to learn more!

\$409,900



4 Bedrooms



3.0 Bathrooms



2,343 Sq.Ft.



2 Stories



3 Car Garage

CONTACT US 757-550-2617

WWW.CHESHOMES.COM



Chesapeake Homes continuously improves home designs and reserves the right to modify home features and specifications without notice or obligation. Square footage and measurements are approximate. Renderings of elevations are artist's concepts. Floor plans vary per elevation. Chesapeake Homes standard features vary by home design and location, please refer to the included features sheet for the community to define specifications. This brochure is for illustrative purposes and not part of the legal contract. Please ask

FIRST FLOOR



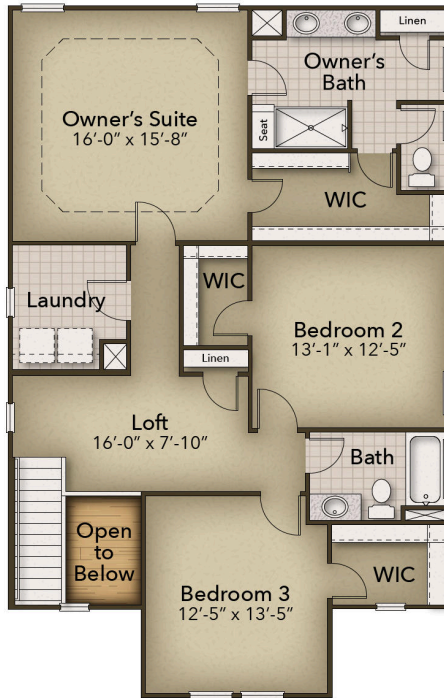
CONTACT US 757-550-2617

WWW.CHESHOMES.COM



Chesapeake Homes continuously improves home designs and reserves the right to modify home features and specifications without notice or obligation. Square footage and measurements are approximate. Renderings of elevations are artist's concepts. Floor plans vary per elevation. Chesapeake Homes standard features vary by home design and location, please refer to the included features sheet for the community to define specifications. This brochure is for illustrative purposes and not part of the legal contract. Please ask Sales Associate for complete details. © 2025 Chesapeake Homes. Current information as 30th April 2025

SECOND FLOOR



CONTACT US 757-550-2617

WWW.CHESHOMES.COM



Chesapeake Homes continuously improves home designs and reserves the right to modify home features and specifications without notice or obligation. Square footage and measurements are approximate. Renderings of elevations are artist's concepts. Floor plans vary per elevation. Chesapeake Homes standard features vary by home design and location, please refer to the included features sheet for the community to define specifications. This brochure is for illustrative purposes and not part of the legal contract. Please ask Sales Associate for complete details. © 2025 Chesapeake Homes. Current information as 30th April 2025