



The Farm at Neill's Creek Community

The Holly Floor Plan

The Holly layout is a great example of how Chesapeake Homes creates spaces that are both functional and beautiful. This 2,343 square foot home provides homeowners with an included three-car garage, an open-concept great room, a kitchen, and a dining room that leads to an outdoor patio. Love having people over for dinner? This home features a gourmet island. On the ground floor, you will also find a bedroom and full bath. On the second floor, you will find two spacious bedrooms both with walk-in closets and a full bathroom. The rest of the floor is the open loft that leads to the Owner's suite and laundry room. The owner's suite has tray ceilings, a deluxe bathroom, and a walk-in closet. It will be the perfect spot to lay your head down after a long day. This stylish all-in-one build is perfect for the homeowner who wants to be able to have a new home construction with a great framework to make your very own.*Please reach out to learn more about this home and secure your VIP tour ...

\$419,900



4 Bedrooms



3.0 Bathrooms



2,343 Sq.Ft.



2 Stories



3 Car Garage

FIRST FLOOR

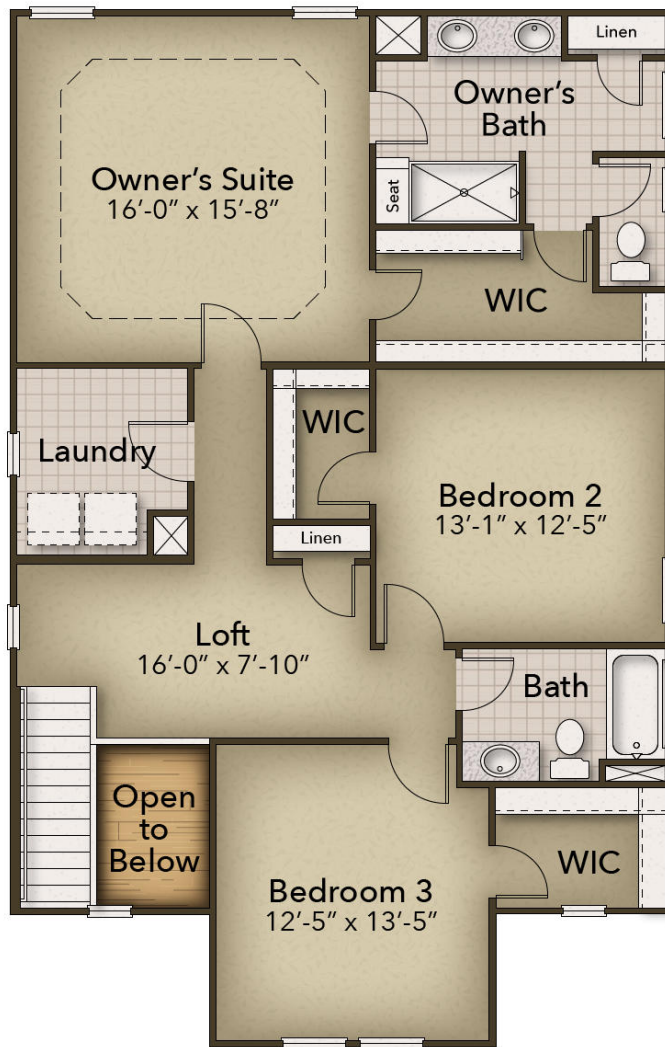


CONTACT US 757-550-2617

WWW.CESHOMES.COM



SECOND FLOOR



CONTACT US 757-550-2617

WWW.CESHOMES.COM

