



From \$366,900

The Holly layout is a great example of how Chesapeake Homes create spaces that are both functional and beautiful. This 2,343 square feet home provides homeowners with an included three-car garage, an open-concept great room, a kitchen, and a dining room that leads to an outdoor patio. An optional indoor fireplace, sliding glass door to the patio, or rear covered porch allows buyers to make the home specific to their needs. Love having people over for dinner? Choices to change up your kitchen include a gourmet island, double ovens, or a desk in the kitchen. On the ground floor, you will also find a bedroom and powder room that can be upgraded to a full bathroom. On the second floor, you will find two spacious bedrooms both with walk-in closets and a full bathroom. The rest of the floor is the open loft that leads to the Owner's suite and laundry room with an optional countertop and tub. The owner's suite has tray ceilings, an option for a deluxe bathroom, and a long walk-in closet. It will be the perfect spot to lay your head down after a long ...



4 Bedrooms



2.5 Bathrooms



2,343 Sq.Ft.



2 Stories



3 Car Garage

CONTACT US 757-550-2617

WWW.CESHOMES.COM



Chesapeake Homes continuously improves home designs and reserves the right to modify home features and specifications without notice or obligation. Square footage and measurements are approximate. Renderings of elevations are artist's concepts. Floor plans vary per elevation. Chesapeake Homes standard features vary by home design and location, please refer to the included features sheet for the community to define specifications. This brochure is for illustrative purposes and not part of the legal contract. Please ask Sales Associate for complete details. © 2025 Chesapeake Homes. Current information as 13th December 2025

FIRST FLOOR

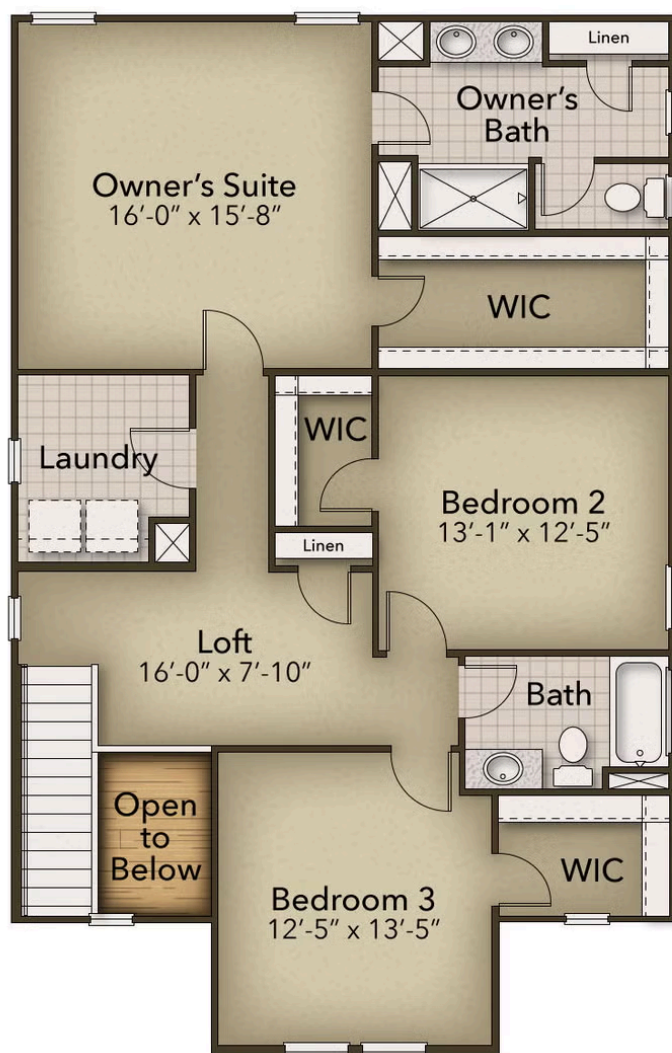


CONTACT US 757-550-2617

WWW.CHESHOMES.COM



SECOND FLOOR



CONTACT US 757-550-2617

WWW.CHESHOMES.COM

