



*From \$354,900*

The Symphony is a beautiful ensemble of a home that will be music to your family's ears. With 2,330 square feet of open area, this model offers three to four bedrooms depending on your layout choices. Each bedroom is on the second floor including the stunning owner's suite with tray ceilings, a large bathroom with a deluxe option, and two walk-in closets. The laundry room is conveniently located outside the owner's suite along with two bedrooms, a full bath, and a loft. The open vast loft can be converted into another bedroom if you want or you can turn it into anything you want. Downstairs you find an open-concept living space. The great room, breakfast nook, and kitchen all flow together like a song. Love to cook? Add in options for a gourmet kitchen with double ovens and a gourmet island or add a covered porch in the back to make the perfect outdoor eating area. Also on the ground floor, we find a dining room that can be converted to a den, a powder room, and an access door to the two-car garage. The Symphony always gives a ...



**3 Bedrooms**



**2.5 Bathrooms**



**2,174 Sq.Ft.**



**2 Stories**

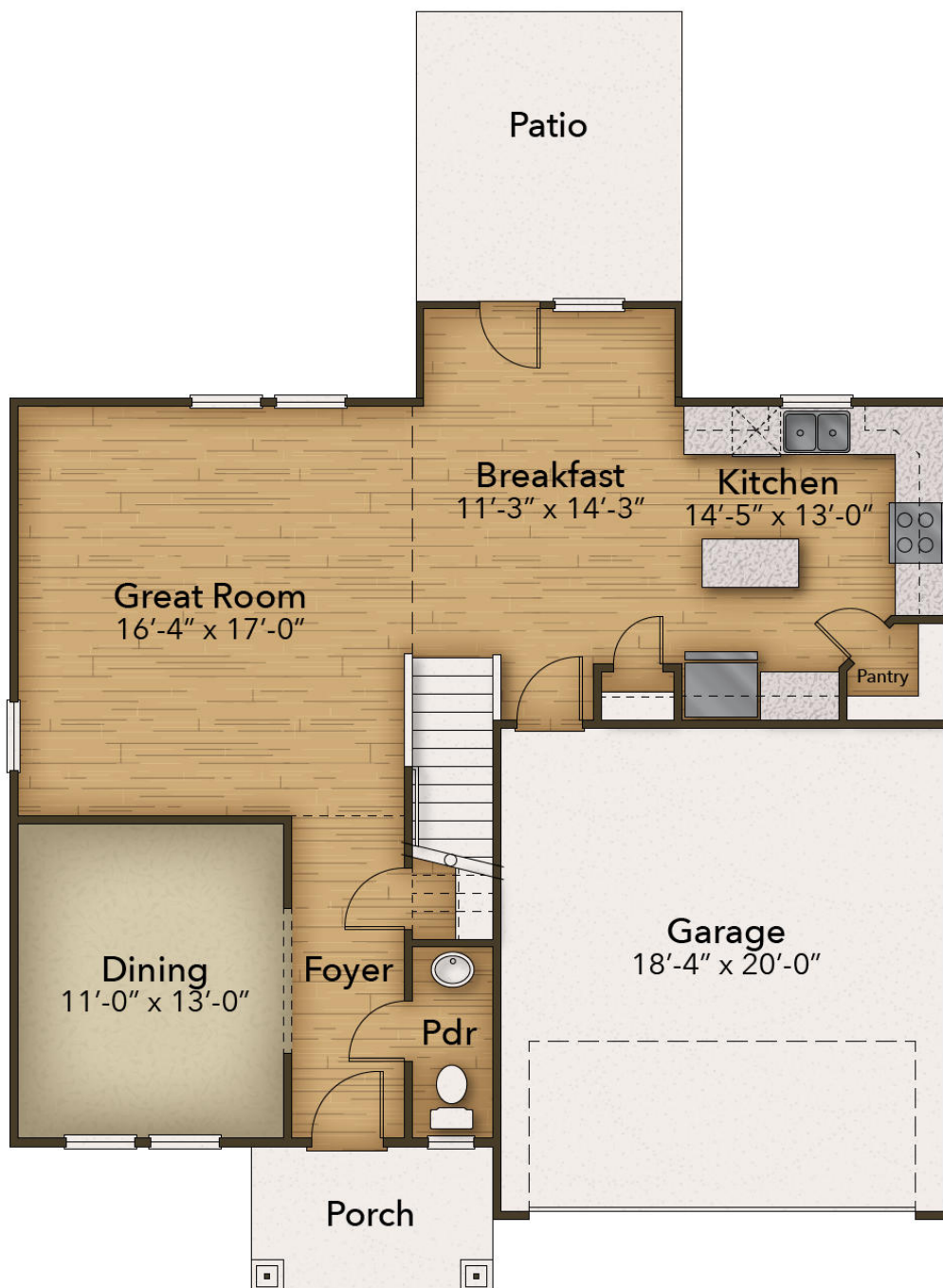


**2 Car Garage**

**CONTACT US 757-550-2617**

**WWW.CESHOMES.COM**

## FIRST FLOOR



**CONTACT US** 757-550-2617

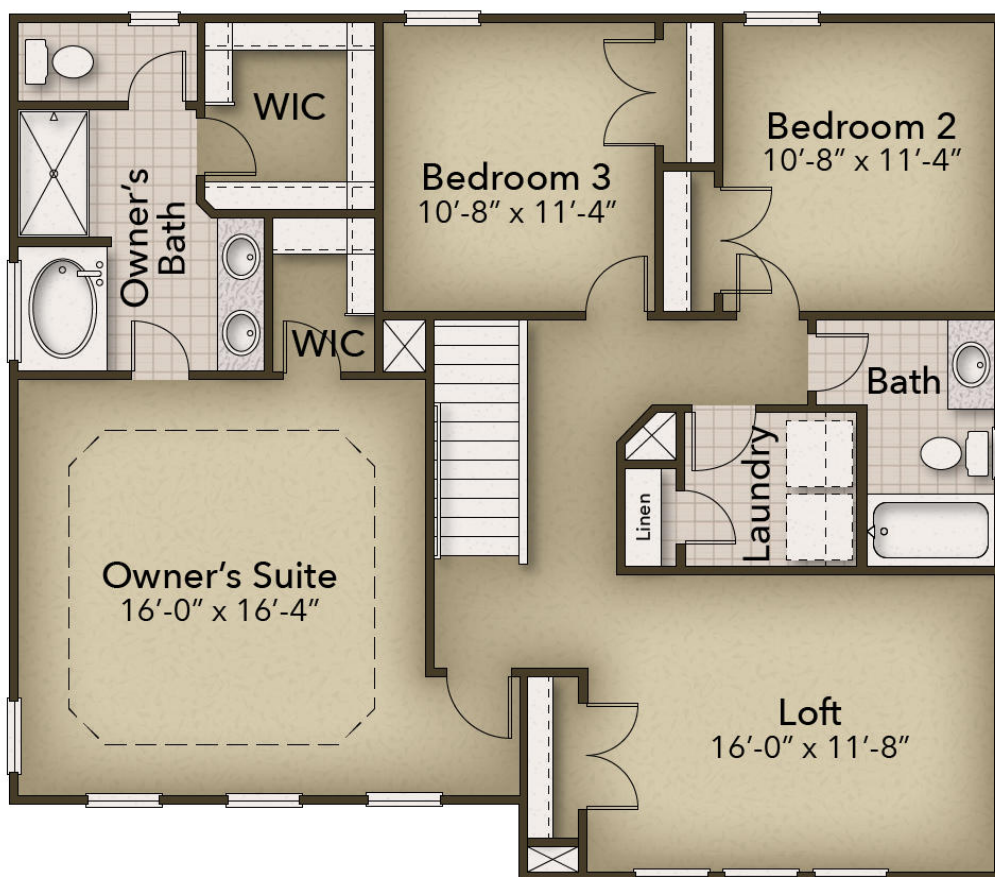
**WWW.CESHOMES.COM**



Chesapeake Homes continuously improves home designs and reserves the right to modify home features and specifications without notice or obligation. Square footage and measurements are approximate. Renderings of elevations are artist's concepts. Floor plans vary per elevation. Chesapeake Homes standard features vary by home design and location, please refer to the included features sheet for the community to define specifications. This brochure is for illustrative purposes and not part of the legal contract. Please ask Sales Associate for complete details. © 2024 Chesapeake Homes. Current information as 3rd May 2024



## SECOND FLOOR



**CONTACT US** 757-550-2617

**WWW.CESHOMES.COM**



Chesapeake Homes continuously improves home designs and reserves the right to modify home features and specifications without notice or obligation. Square footage and measurements are approximate. Renderings of elevations are artist's concepts. Floor plans vary per elevation. Chesapeake Homes standard features vary by home design and location, please refer to the included features sheet for the community to define specifications. This brochure is for illustrative purposes and not part of the legal contract. Please ask Sales Associate for complete details. © 2024 Chesapeake Homes. Current information as 3rd May 2024