

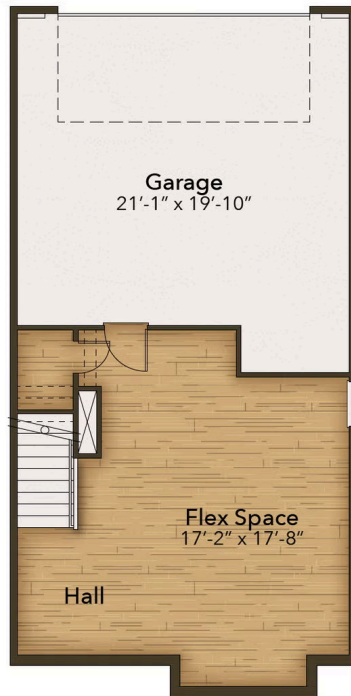


The Da Vinci is a classic plan that gives you the best of easy, townhome living while still being spacious. At 2,293 square feet, there is plenty of room for all! The added bonus of a basement space means that you have options for how to use the space. Whether a home office is important to you, or having a recreation room to enjoy your down time, this plan delivers! If an additional bedroom is just what you need, select the option of a fourth bedroom and full bathroom on the basement level. Enter the first floor living space from the front door or from your basement to find the perfect open concept plan that will make you want to host Sunday dinner or enjoy a Friday night gathering. Outdoor living is everything, so spend a lazy afternoon relaxing on your large deck to take in some fresh air! The second floor has an Owner's Suite that will welcome you with open arms at the end of the day and a walk-in closet that is sure to provide an ample amount of storage. The Owner's Bath with separate linen ...

**3 Bedrooms****2.5 Bathrooms****2,293 Sq.Ft.****3 Stories****2 Car Garage****CONTACT US 757-550-2617****WWW.CHESHOMES.COM**

Chesapeake Homes continuously improves home designs and reserves the right to modify home features and specifications without notice or obligation. Square footage and measurements are approximate. Renderings of elevations are artist's concepts. Floor plans vary per elevation. Chesapeake Homes standard features vary by home design and location, please refer to the included features sheet for the community to define specifications. This brochure is for illustrative purposes and not part of the legal contract. Please ask Sales Associate for complete details. © 2025 Chesapeake Homes. Current information as 11th May 2025

BASEMENT



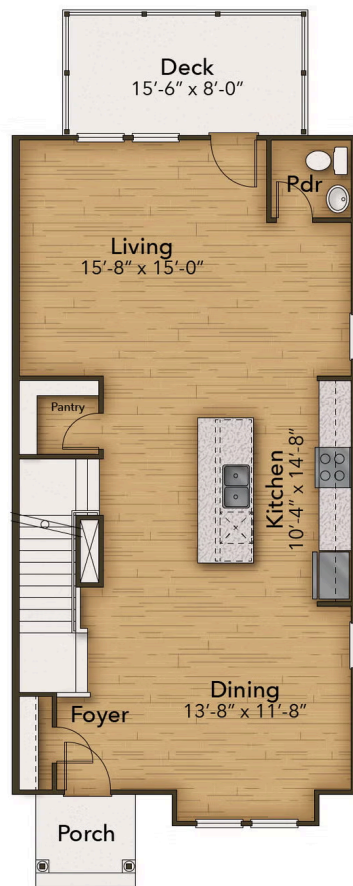
CONTACT US 757-550-2617

WWW.CHESHOMES.COM



Chesapeake Homes continuously improves home designs and reserves the right to modify home features and specifications without notice or obligation. Square footage and measurements are approximate. Renderings of elevations are artist's concepts. Floor plans vary per elevation. Chesapeake Homes standard features vary by home design and location, please refer to the included features sheet for the community to define specifications. This brochure is for illustrative purposes and not part of the legal contract. Please ask Sales Associate for complete details. © 2025 Chesapeake Homes. Current information as 11th May 2025

FIRST FLOOR



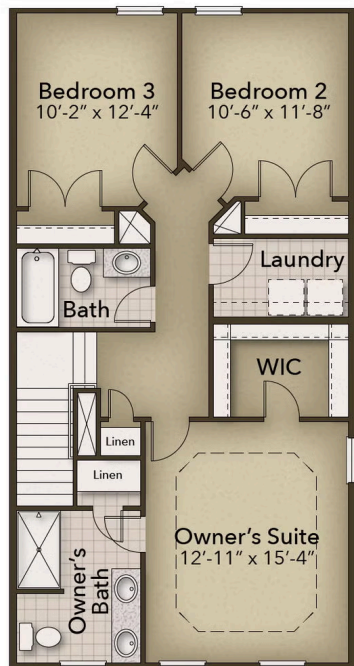
CONTACT US 757-550-2617

WWW.CHESHOMES.COM



Chesapeake Homes continuously improves home designs and reserves the right to modify home features and specifications without notice or obligation. Square footage and measurements are approximate. Renderings of elevations are artist's concepts. Floor plans vary per elevation. Chesapeake Homes standard features vary by home design and location, please refer to the included features sheet for the community to define specifications. This brochure is for illustrative purposes and not part of the legal contract. Please ask Sales Associate for complete details. © 2025 Chesapeake Homes. Current information as 11th May 2025

SECOND FLOOR



CONTACT US 757-550-2617

WWW.CHESHOMES.COM



Chesapeake Homes continuously improves home designs and reserves the right to modify home features and specifications without notice or obligation. Square footage and measurements are approximate. Renderings of elevations are artist's concepts. Floor plans vary per elevation. Chesapeake Homes standard features vary by home design and location, please refer to the included features sheet for the community to define specifications. This brochure is for illustrative purposes and not part of the legal contract. Please ask Sales Associate for complete details. © 2025 Chesapeake Homes. Current information as 11th May 2025