



Welcome to The Rockwell! Boasting just over 2,300 square feet, this plan combines the easy townhome living with spacious living! Enter the basement through your garage to find a flex space that you can choose to utilize in many ways. From a private office space away from the noise of the home to a game room, the choice is yours! If you've dreamed of having an at-home theater room, you can select the recreation room option to provide a more defined space. Journey up to the first floor, where you will enter through the front door, and be amazed by the vast living area. The dining room is perfect if you love to host gatherings and the kitchen is a great space to prepare your meals for an evening in. Your living space will make it easy to cozy up and the deck off of the living can bring your lounging from inside to outside if the outdoors is what you crave. The second floor gives way to an Owner's Suite that acts as an oasis to rest in at the end of a long day. The tray ceiling ...



3 Bedrooms



2.5 Bathrooms



2,346 Sq.Ft.



3 Stories



2 Car Garage

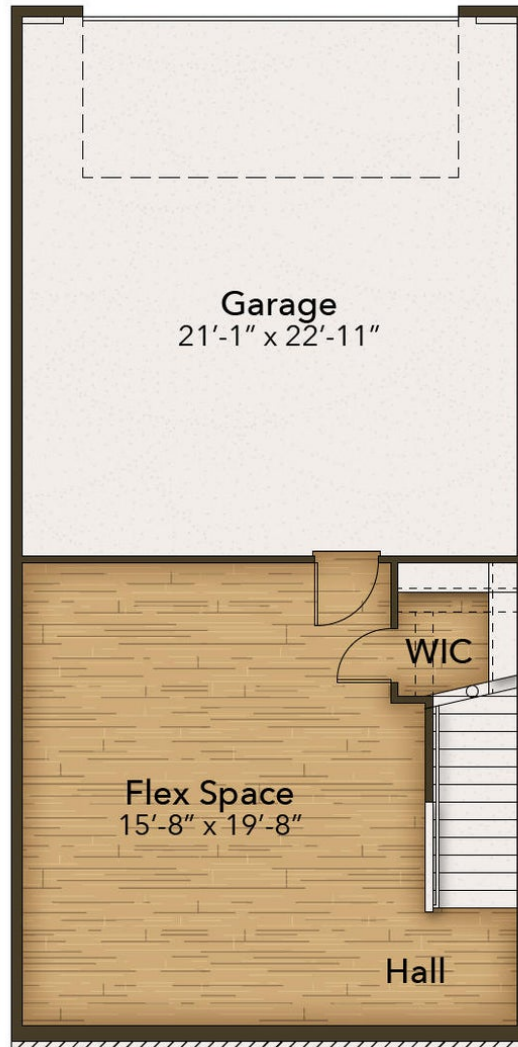
CONTACT US 757-550-2617

WWW.CESHOMES.COM



Chesapeake Homes continuously improves home designs and reserves the right to modify home features and specifications without notice or obligation. Square footage and measurements are approximate. Renderings of elevations are artist's concepts. Floor plans vary per elevation. Chesapeake Homes standard features vary by home design and location, please refer to the included features sheet for the community to define specifications. This brochure is for illustrative purposes and not part of the legal contract. Please ask Sales Associate for complete details. © 2024 Chesapeake Homes. Current information as 15th August 2024

BASEMENT

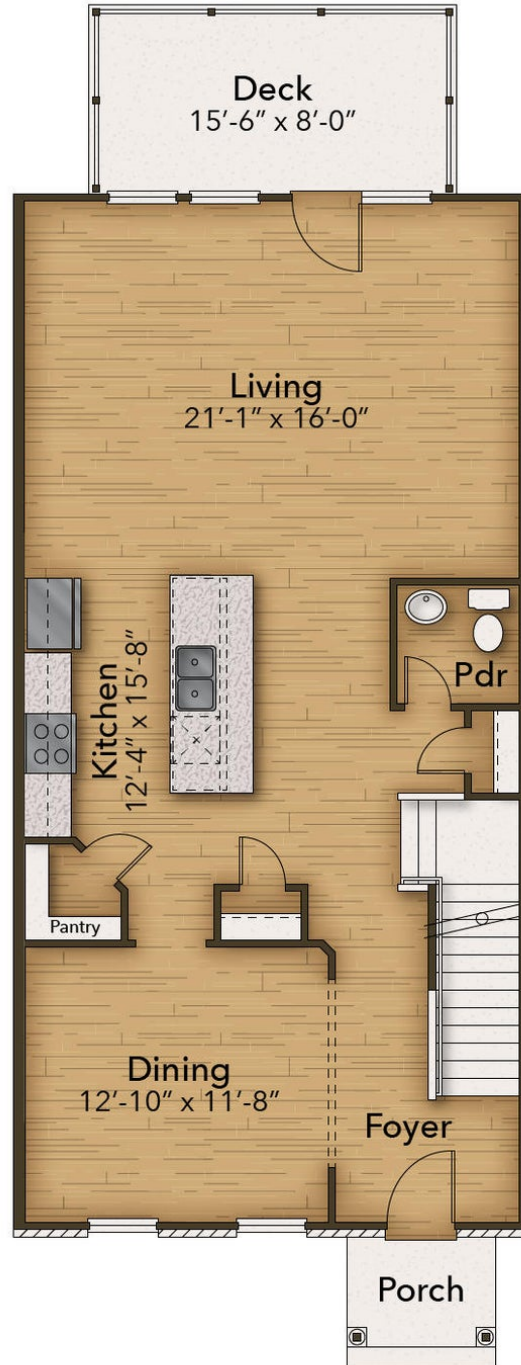


CONTACT US 757-550-2617

WWW.CESHOMES.COM



FIRST FLOOR

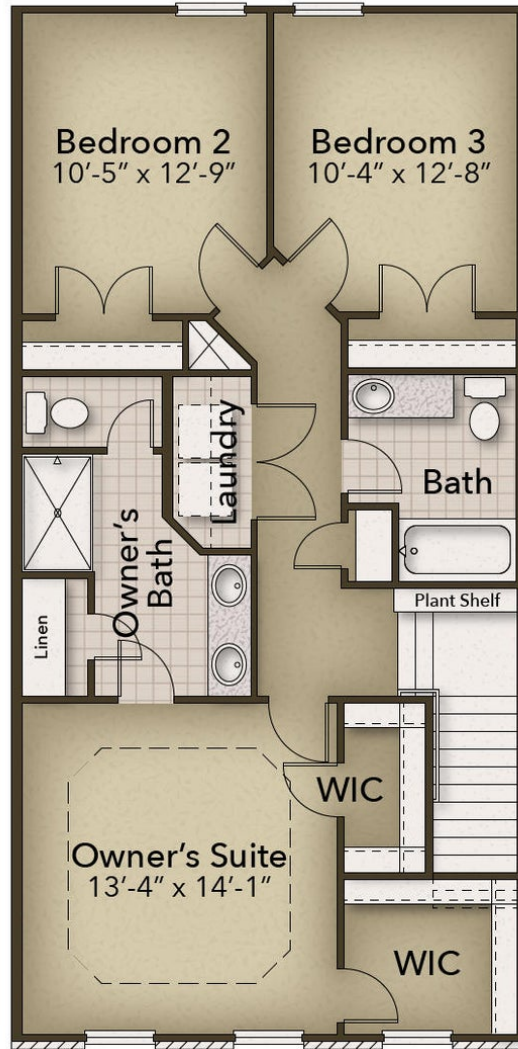


CONTACT US 757-550-2617

WWW.CESHOMES.COM



SECOND FLOOR



CONTACT US 757-550-2617

WWW.CESHOMES.COM

