



## Waterleigh Community

### The Everest Floor Plan

At 3,351 square feet, The Everest provides space for all! Step in from a welcoming front porch into an open concept living area, including a kitchen with a large island. Just off the kitchen find a separate dining room that can also be used as a flex space for the ultimate in personalization. Enjoy an evening relaxing by the fire or relax on the back patio if the outdoors is where you'd rather be. This spacious first floor offers an additional guest suite complete with an optional full bathroom. Upstairs find the Owner's Suite, complete with tray ceilings, two vast walk-in closets, and an Owner's Bathroom - perfect for unwinding at the day's end. Enjoy the ease of having an upstairs laundry room just off the Owner's Suite. Three additional rooms with walk-in closets fill the upstairs along with an additional full bathroom. This unique model offers a multi-functional media room. Experience large living in our model, The Everest.\*\*Please call our Online Sales Consultants at 757-550-2617 to learn more!

**\$609,900**



**5 Bedrooms**



**3.0 Bathrooms**



**3,351 Sq.Ft.**



**2 Stories**



**2 Car Garage**

**CONTACT US 757-550-2617**

**WWW.CESHOMES.COM**



## FIRST FLOOR



CONTACT US 757-550-2617

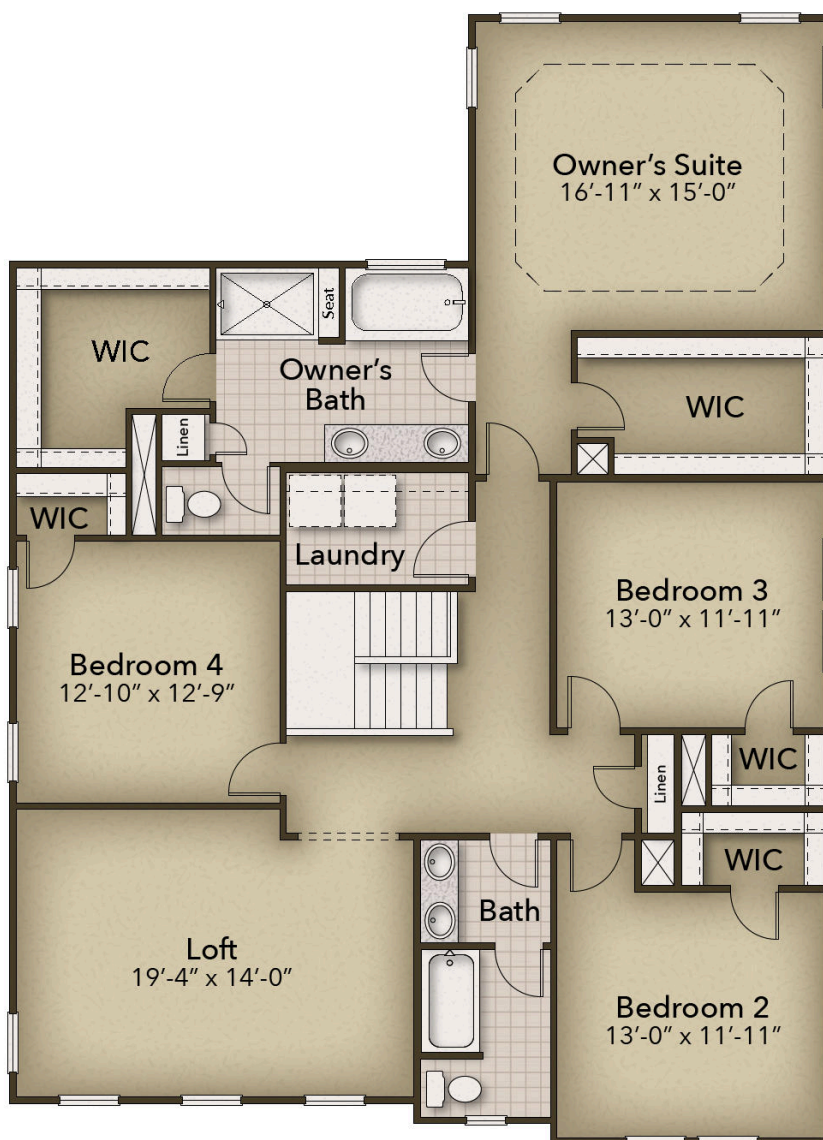
WWW.CESHOMES.COM



Chesapeake Homes continuously improves home designs and reserves the right to modify home features and specifications without notice or obligation. Square footage and measurements are approximate. Renderings of elevations are artist's concepts. Floor plans vary per elevation. Chesapeake Homes standard features vary by home design and location, please refer to the included features sheet for the community to define specifications. This brochure is for illustrative purposes and not part of the legal contract. Please ask Sales Associate for complete details. © 2025 Chesapeake Homes. Current information as 27th July 2025



## SECOND FLOOR



CONTACT US 757-550-2617

WWW.CHESHOMES.COM

