



From \$504,900

At 3,351 square feet, The Everest provides space for all! Step in from a welcoming front porch into an open concept living area, including a kitchen with a large island. Just off the kitchen find a separate dining room that can also be used as a flex space for the ultimate in personalization. Enjoy an evening relaxing by the fire or relax on the back patio if the outdoors is where you'd rather be. This spacious first floor offers an additional guest suite complete with an optional full bathroom. Upstairs find the Owner's Suite, complete with tray ceilings, two vast walk-in closets, and an Owner's Bathroom - perfect for unwinding at the day's end. Enjoy the ease of having an upstairs laundry room just off the Owner's Suite. Three additional rooms with walk-in closets fill the upstairs along with an additional full bathroom. This unique model offers a multi-functional loft area that can be used as a playroom, media room, or additional bedroom! Experience large living in our model, The Everest.



5 Bedrooms



2.5 Bathrooms



3,351 Sq.Ft.



2 Stories



2 Car Garage

CONTACT US 757-550-2617

WWW.CESHOMES.COM



FIRST FLOOR

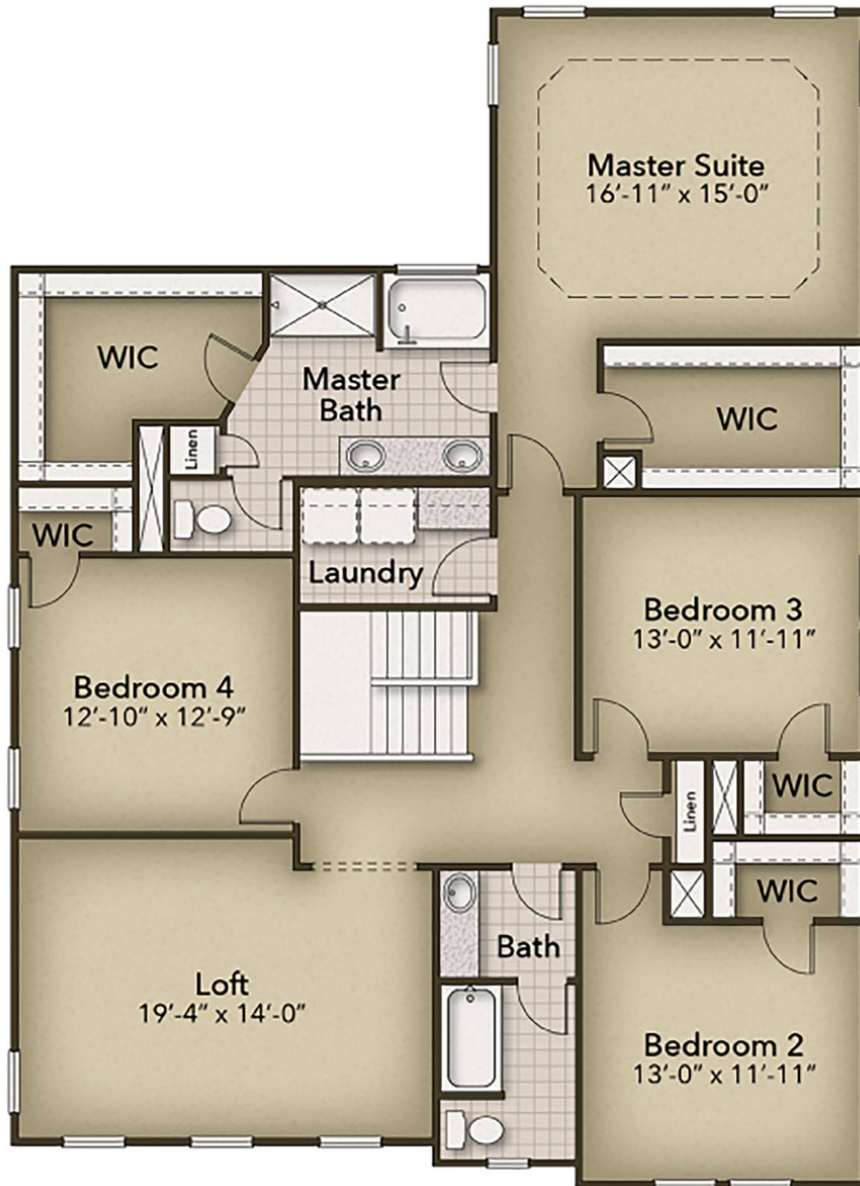


CONTACT US 757-550-2617

WWW.CESHOMES.COM



SECOND FLOOR



CONTACT US 757-550-2617

WWW.CESHOMES.COM

