



With over 2,000 square feet of comfortable living space, The Lavender offers three bedrooms, two and a half bathrooms, and one or two-car garage options. The two-story Lavender townhome features a first-floor Owner's Suite complete with a linen closet, large walk-in closet, and deluxe Owner's Bath. An open floor plan creates an all-encompassing kitchen, living, and dining area, which is complemented by an optional gas fireplace. Just beyond, find a large patio as well as a connected walkway that meets your garage for added convenience. Choose between having a downstairs laundry room or an upstairs laundry room that offers an optional soaking sink for a more functional space. Discover two additional bedrooms upstairs and a beautiful bathroom that includes options for a double bowl vanity, seated shower, or large shower and deep soaking tub. Featuring a flexible loft space, this unique floor plan allows you to create a playroom, crafting studio, personal gym, media room, or whatever you may desire. With built-in luxuries, ample space, and an endless amount of options, relax into The Lavender townhome today!



**3 Bedrooms**



**2.5 Bathrooms**



**2,037 Sq.Ft.**



**2 Stories**



**1 Car Garage**

**CONTACT US 757-550-2617**

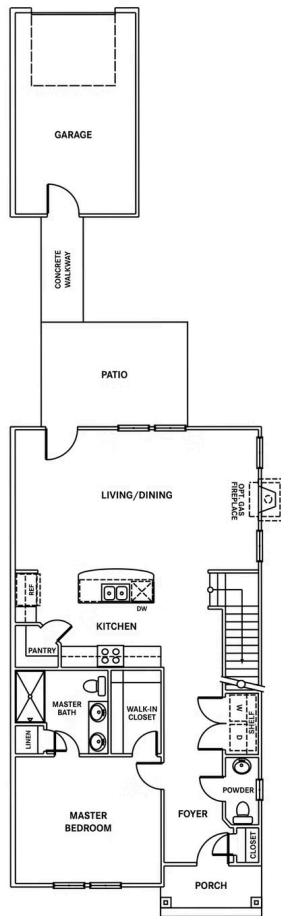
**WWW.CHESHOMES.COM**



Chesapeake Homes continuously improves home designs and reserves the right to modify home features and specifications without notice or obligation. Square footage and measurements are approximate. Renderings of elevations are artist's concepts. Floor plans vary per elevation. Chesapeake Homes standard features vary by home design and location, please refer to the included features sheet for the community to define specifications. This brochure is for illustrative purposes and not part of the legal contract. Please ask Sales Associate for complete details. © 2025 Chesapeake Homes. Current information as 3rd May 2025



## FIRST FLOOR



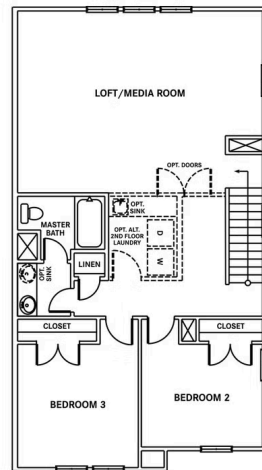
CONTACT US 757-550-2617

WWW.CHESHOMES.COM



Chesapeake Homes continuously improves home designs and reserves the right to modify home features and specifications without notice or obligation. Square footage and measurements are approximate. Renderings of elevations are artist's concepts. Floor plans vary per elevation. Chesapeake Homes standard features vary by home design and location, please refer to the included features sheet for the community to define specifications. This brochure is for illustrative purposes and not part of the legal contract. Please ask Sales Associate for complete details. © 2025 Chesapeake Homes. Current information as 3rd May 2025

## SECOND FLOOR



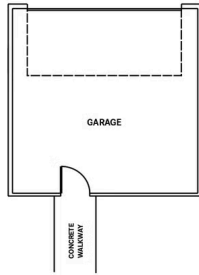
CONTACT US 757-550-2617

WWW.CHESHOMES.COM

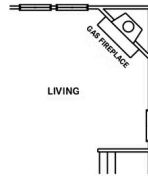


Chesapeake Homes continuously improves home designs and reserves the right to modify home features and specifications without notice or obligation. Square footage and measurements are approximate. Renderings of elevations are artist's concepts. Floor plans vary per elevation. Chesapeake Homes standard features vary by home design and location, please refer to the included features sheet for the community to define specifications. This brochure is for illustrative purposes and not part of the legal contract. Please ask Sales Associate for complete details. © 2025 Chesapeake Homes. Current information as 3rd May 2025

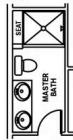
## OPTIONS



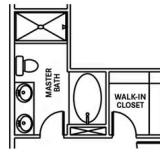
**OPT. TWO-CAR  
GARAGE**



**OPT. CORNER  
GAS FIREPLACE**



**FIRST FLOOR -  
OPT. DELUXE  
MASTER BATH #1**



**FIRST FLOOR -  
OPT. DELUXE  
MASTER BATH #2**

CONTACT US 757-550-2617

WWW.CHESHOMES.COM



Chesapeake Homes continuously improves home designs and reserves the right to modify home features and specifications without notice or obligation. Square footage and measurements are approximate. Renderings of elevations are artist's concepts. Floor plans vary per elevation. Chesapeake Homes standard features vary by home design and location, please refer to the included features sheet for the community to define specifications. This brochure is for illustrative purposes and not part of the legal contract. Please ask Sales Associate for complete details. © 2025 Chesapeake Homes. Current information as 3rd May 2025