



From your full front porch, step into The Lemongrass and experience a new home with nearly 2,000 square feet of two-story, spacious living complete with three bedrooms, two and a half bathrooms, and a single-car garage. The open floor plan of The Lemongrass makes for easy entertaining with a vast living area, which leads to an airy dining and kitchen space. A walk-in pantry gives you ample space for your kitchen storage needs. Enjoy warm summer nights or year-round grilling on a large patio that is accompanied by a connecting walkway from your single-car garage. Create a convenient drop zone area from your patio access with the added option of a bench with pegs to drop the weight of the day. Upstairs, find a luxurious Owner's Suite complete with a tray ceiling, spacious walk-in closet, and Owner's Bath with double bowl sinks and the option for a large seated shower. This floor also features two additional bedrooms, a full bathroom, multiple closets, and a laundry room. With plenty of space for everyone, The Lemongrass offers the perfect combination of everyday conveniences and built-in luxury!



3 Bedrooms



2.5 Bathrooms



1,722 Sq.Ft.



2 Stories



1 Car Garage

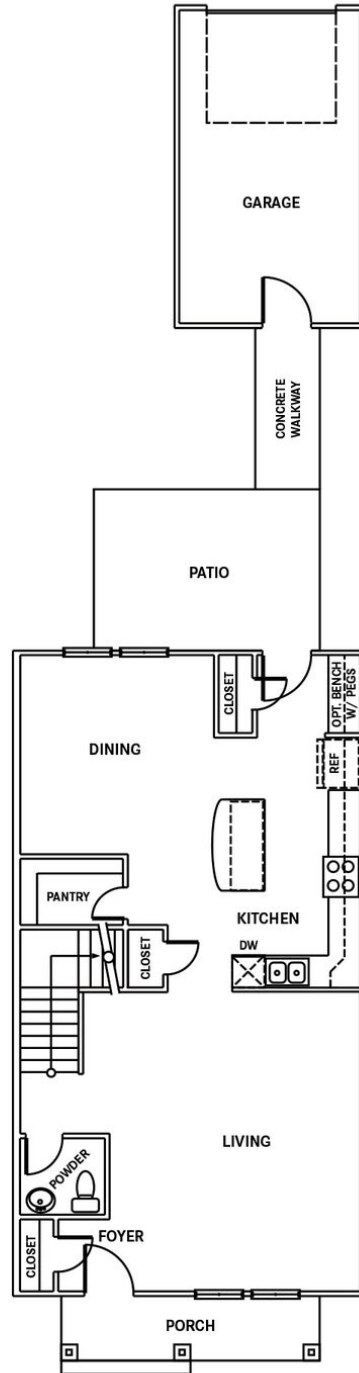
CONTACT US 757-550-2617

WWW.CESHOMES.COM



Chesapeake Homes continuously improves home designs and reserves the right to modify home features and specifications without notice or obligation. Square footage and measurements are approximate. Renderings of elevations are artist's concepts. Floor plans vary per elevation. Chesapeake Homes standard features vary by home design and location, please refer to the included features sheet for the community to define specifications. This brochure is for illustrative purposes and not part of the legal contract. Please ask Sales Associate for complete details. © 2024 Chesapeake Homes. Current information as 23rd June 2024

FIRST FLOOR

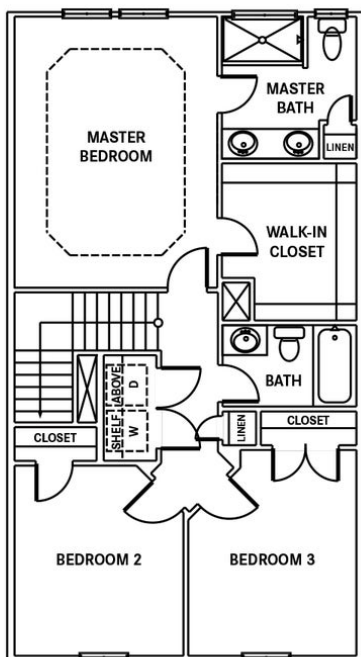


CONTACT US 757-550-2617

WWW.CESHOMES.COM



SECOND FLOOR

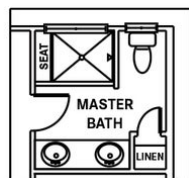


CONTACT US 757-550-2617

WWW.CESHOMES.COM



OPTIONS



**OPT. DELUXE
MASTER BATH**

CONTACT US 757-550-2617

WWW.CESHOMES.COM

