



One of Chesapeake Homes' larger two-story models, The Sage features three bedrooms, two and a half bathrooms, and a one or two-car garage option in over 2,000 square feet of space. From your front porch, enter a grand foyer with optional French doors leading into a large dining room. The kitchen offers a large center island or optional gourmet island, walk-in pantry, and optional butler's pantry or built-in desk. Connected to this spacious area find an open living area made complete with an optional gas fireplace. Past the living room, find a spacious patio connected to a private walkway that leads to your garage. Easily unload your car with an optional drop zone area complete with a bench and pegs conveniently located just inside. Two spacious bedrooms, a full bathroom, and a laundry room with an optional sink accompany the upstairs Owner's Suite. Step into the Owner's Suite to discover your personal haven, with beautiful included tray ceiling and spacious walk-in closet. The Owner's Bath is complete with a large shower, deep soaking tub, and private toilet area. For added luxury, choose to upgrade the Owner's Bath with a seated shower. Built with ...



3 Bedrooms



2.5 Bathrooms



2,037 Sq.Ft.



2 Stories



1 Car Garage

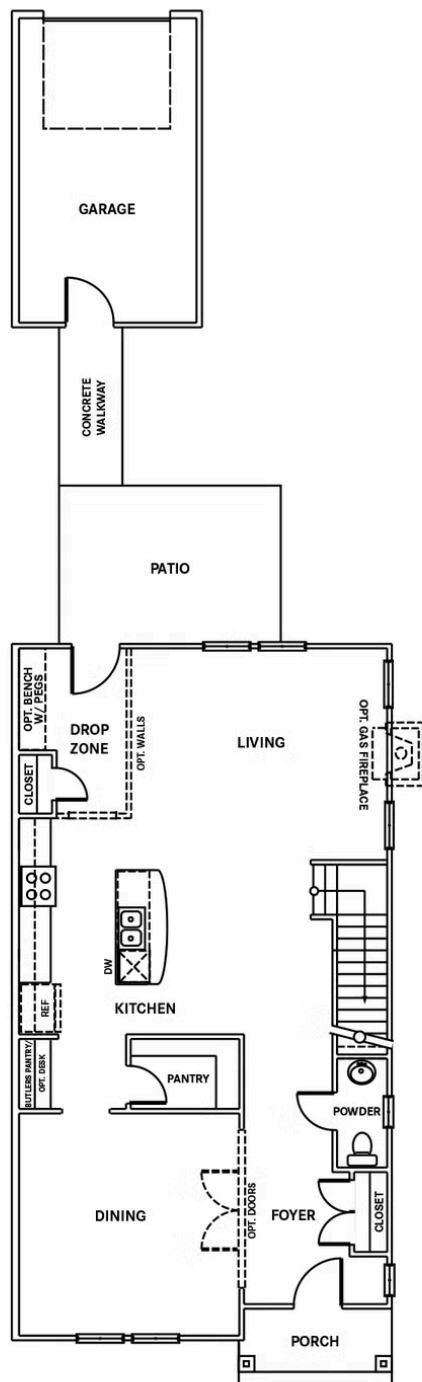
CONTACT US 757-550-2617

WWW.CESHOMES.COM



Chesapeake Homes continuously improves home designs and reserves the right to modify home features and specifications without notice or obligation. Square footage and measurements are approximate. Renderings of elevations are artist's concepts. Floor plans vary per elevation. Chesapeake Homes standard features vary by home design and location, please refer to the included features sheet for the community to define specifications. This brochure is for illustrative purposes and not part of the legal contract. Please ask Sales Associate for complete details. © 2025 Chesapeake Homes. Current information as 10th September 2025

## FIRST FLOOR

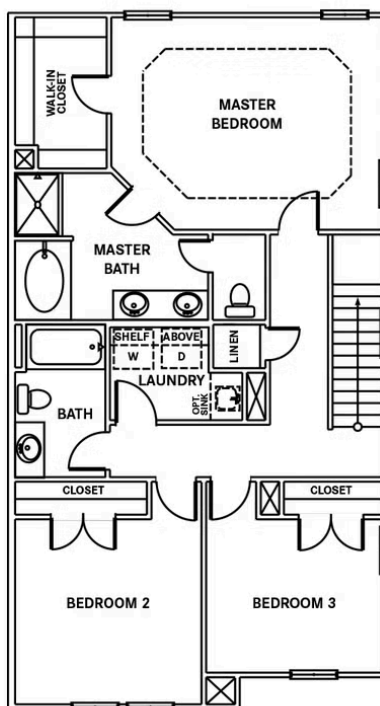


CONTACT US 757-550-2617

WWW.CHESHOMES.COM



## SECOND FLOOR



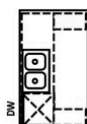
CONTACT US 757-550-2617

WWW.CHESHOMES.COM

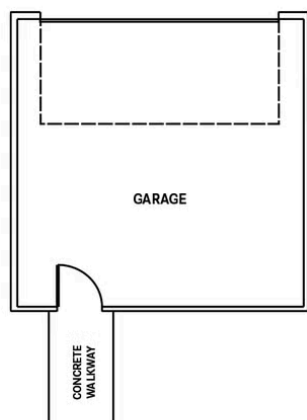


Chesapeake Homes continuously improves home designs and reserves the right to modify home features and specifications without notice or obligation. Square footage and measurements are approximate. Renderings of elevations are artist's concepts. Floor plans vary per elevation. Chesapeake Homes standard features vary by home design and location, please refer to the included features sheet for the community to define specifications. This brochure is for illustrative purposes and not part of the legal contract. Please ask Sales Associate for complete details. © 2025 Chesapeake Homes. Current information as 10th September 2025

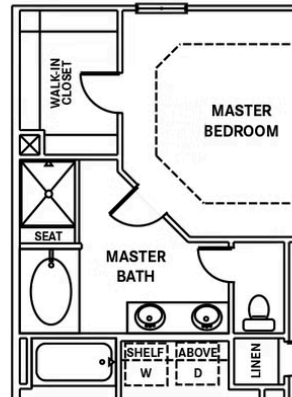
## OPTIONS



OPT. GOURMET  
KITCHEN ISLAND



OPT. TWO-CAR  
GARAGE



SECOND FLOOR -  
OPT. DELUXE  
MASTER BATH

CONTACT US 757-550-2617

WWW.CESHOMES.COM



Chesapeake Homes continuously improves home designs and reserves the right to modify home features and specifications without notice or obligation. Square footage and measurements are approximate. Renderings of elevations are artist's concepts. Floor plans vary per elevation. Chesapeake Homes standard features vary by home design and location, please refer to the included features sheet for the community to define specifications. This brochure is for illustrative purposes and not part of the legal contract. Please ask Sales Associate for complete details. © 2025 Chesapeake Homes. Current information as 10th September 2025