



Coastal Club of the Carolinas Community

The Driftwood Floor Plan

The Driftwood offers three bedrooms and three baths across nearly 2,700 square feet. This two-story home features a first-floor master suite, spacious kitchen, open living areas, and generous storage. Enjoy seamless flow between the great room, dining area, and kitchen with a large island and views of the covered porch. The formal dining room with French doors and a nearby guest suite make hosting easy. The master suite includes a luxurious bath, oversized walk-in closet, and access to a sunroom and covered porch. Upstairs, a large loft, bedroom, full bath, and storage create the perfect private retreat. Designed for comfort and coastal living, the Driftwood has space for everyone.

\$524,900



3 Bedrooms



3.0 Bathrooms



2,704 Sq.Ft.



2 Stories



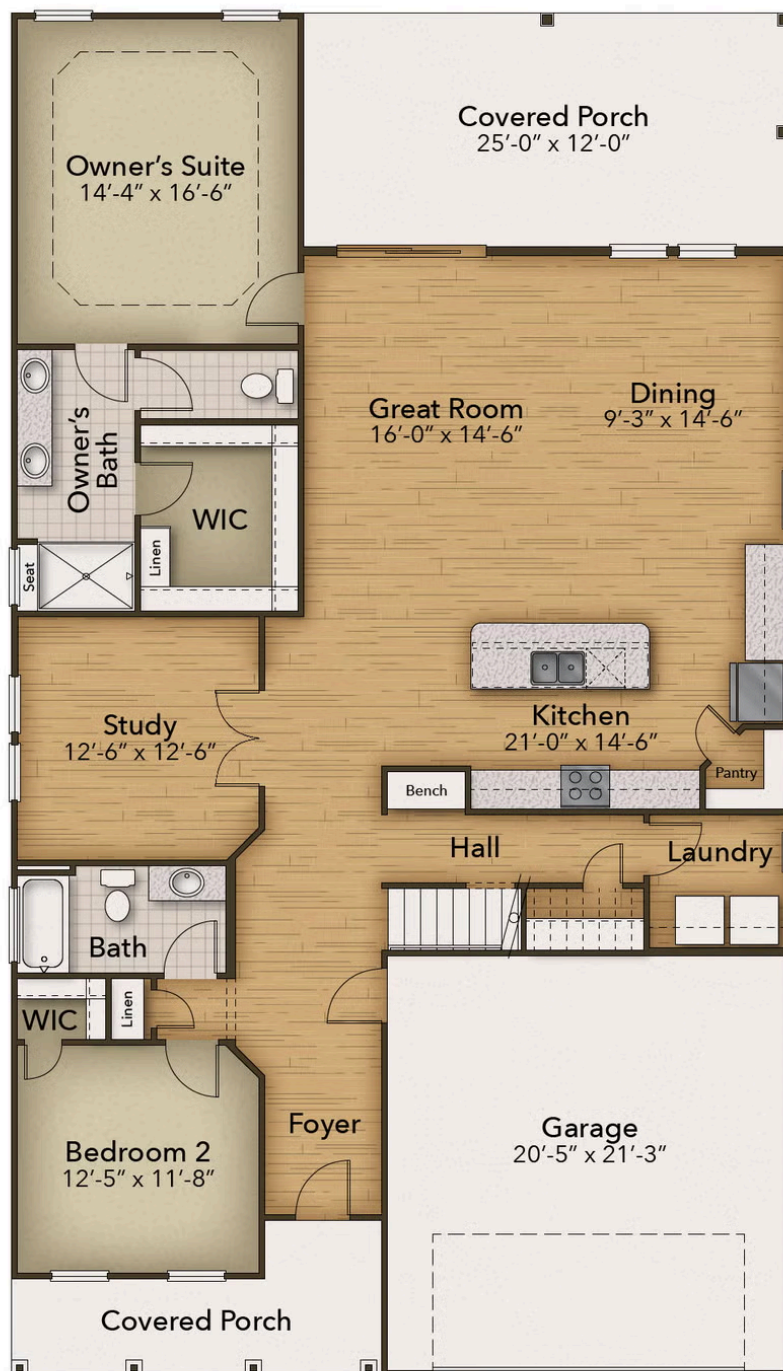
2 Car Garage

CONTACT US 757-550-2617

WWW.CESHOMES.COM



FIRST FLOOR

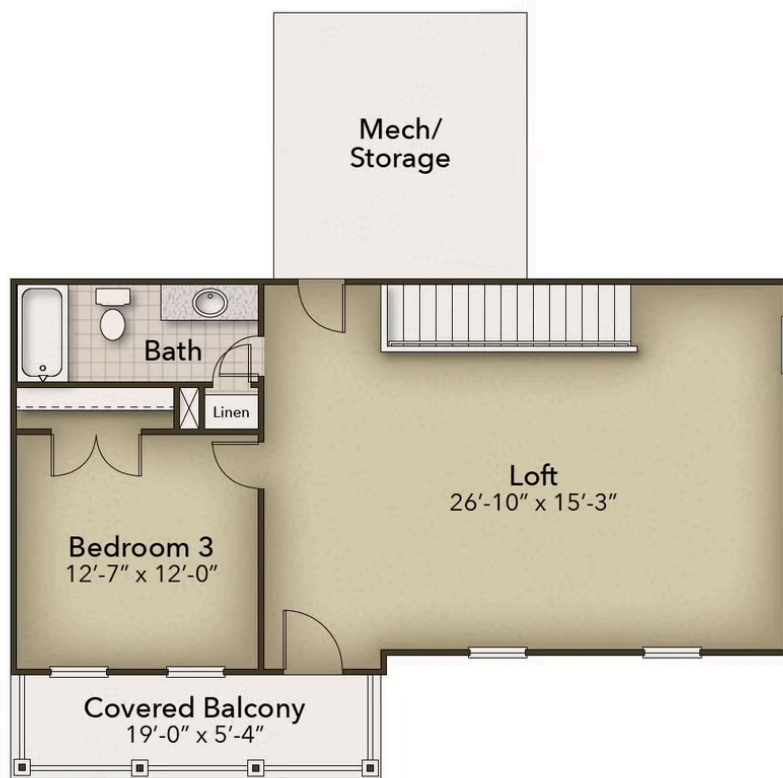


CONTACT US 757-550-2617

WWW.CESHOMES.COM



SECOND FLOOR



CONTACT US 757-550-2617

WWW.CHESHOMES.COM



Chesapeake Homes continuously improves home designs and reserves the right to modify home features and specifications without notice or obligation. Square footage and measurements are approximate. Renderings of elevations are artist's concepts. Floor plans vary per elevation. Chesapeake Homes standard features vary by home design and location, please refer to the included features sheet for the community to define specifications. This brochure is for illustrative purposes and not part of the legal contract. Please ask Sales Associate for complete details. © 2026 Chesapeake Homes. Current information as 19th January 2026